

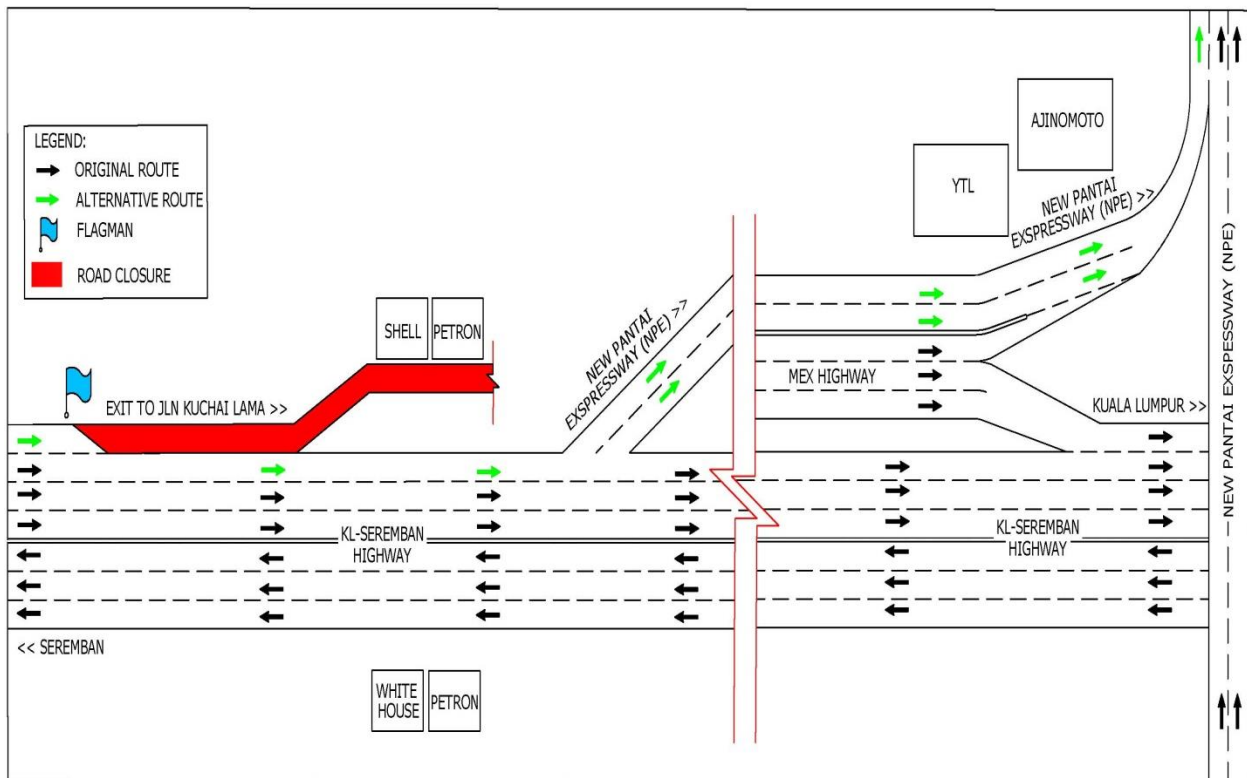
TRAFFIC ANNOUNCEMENT
UPDATES ON TRAFFIC MANAGEMENT PLAN FOR MRT SSP CONSTRUCTION ALONG
KL-SEREMBAN HIGHWAY, SUNGAI BESI HIGHWAY AND JALAN TERMINAL
SELATAN
04 DECEMBER 2017

1. SLIP ROAD CLOSURE ALONG KUALA LUMPUR-SEREMBAN HIGHWAY (D5.0 – D5.4) (KUALA LUMPUR-BOUND)

Date	06 December 2017 - 07 December 2017
Time	10:00pm – 5:00am
Duration	1 day
Reason	To facilitate mobilization of machinery and equipment for tree cutting works for MRT SSP Line

There will be a slip road closure along KL-Seremban Highway (Kuala Lumpur-bound, D5.0-D5.4), at the exit of Jalan Kuchai Lama from **6 December 2017 to 7 December 2017, 10:00pm-5:00am**.

During this closure, motorists heading to Jalan Kuchai Lama will have to go straight and exit at (E10) New Pantai Expressway (NPE), near YTL.



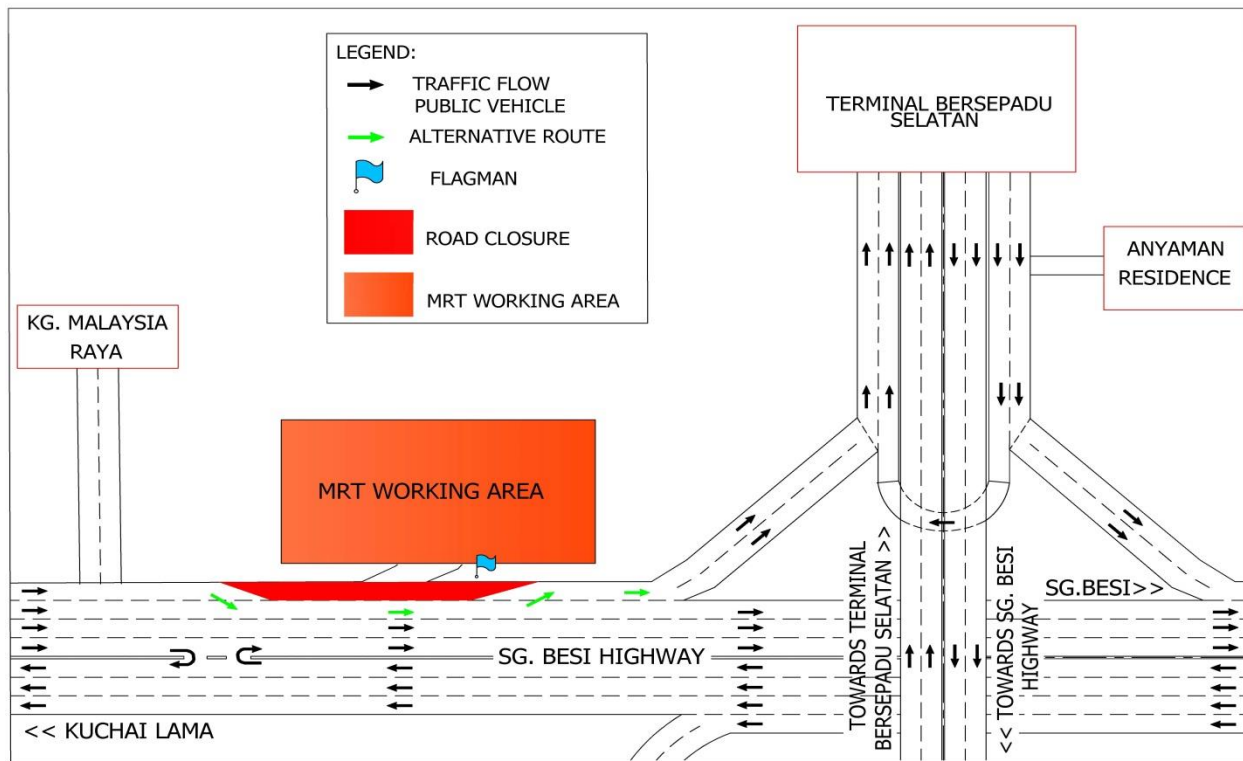
MAP 1 : SLIP ROAD CLOSURE ALONG KUALA LUMPUR-SEREMBAN HIGHWAY (D5.0 – D5.4) (KUALA LUMPUR-BOUND)

2. LEFT LANE CLOSURE ALONG SUNGAI BESI HIGHWAY (KM9.4 – KM9.7) NEAR KAMPUNG MALAYSIA RAYA (SUNGAI BESI-BOUND)

Date	06 December 2017 - 05 January 2018
Time	9:30am – 4:30pm / 10:00pm – 5:00am
Duration	1 month
Reason	To facilitate access of construction road, site clearance, bore pile work, utilities relocation and other related works for MRT SSP Line

There will be a left lane closure near Kampung Malaysia Raya along Sungai Besi Highway (KM9.4 - KM9.7, Sungai Besi-bound), before the exit to Terminal Bersepadu Selatan starting from **6 December 2017 until 5 January 2018, 9:30am – 4:30pm and 10:00pm - 5:00am, daily, intermittently.**

The closure is for a stretch of 300 metres and motorists will still be able to use the slip road to go to Terminal Bersepadu Selatan.



MAP 2 : LEFT LANE CLOSURE ALONG SUNGAI BESI HIGHWAY (KM9.4 – KM9.7) NEAR KAMPUNG MALAYSIA RAYA (SUNGAI BESI-BOUND)

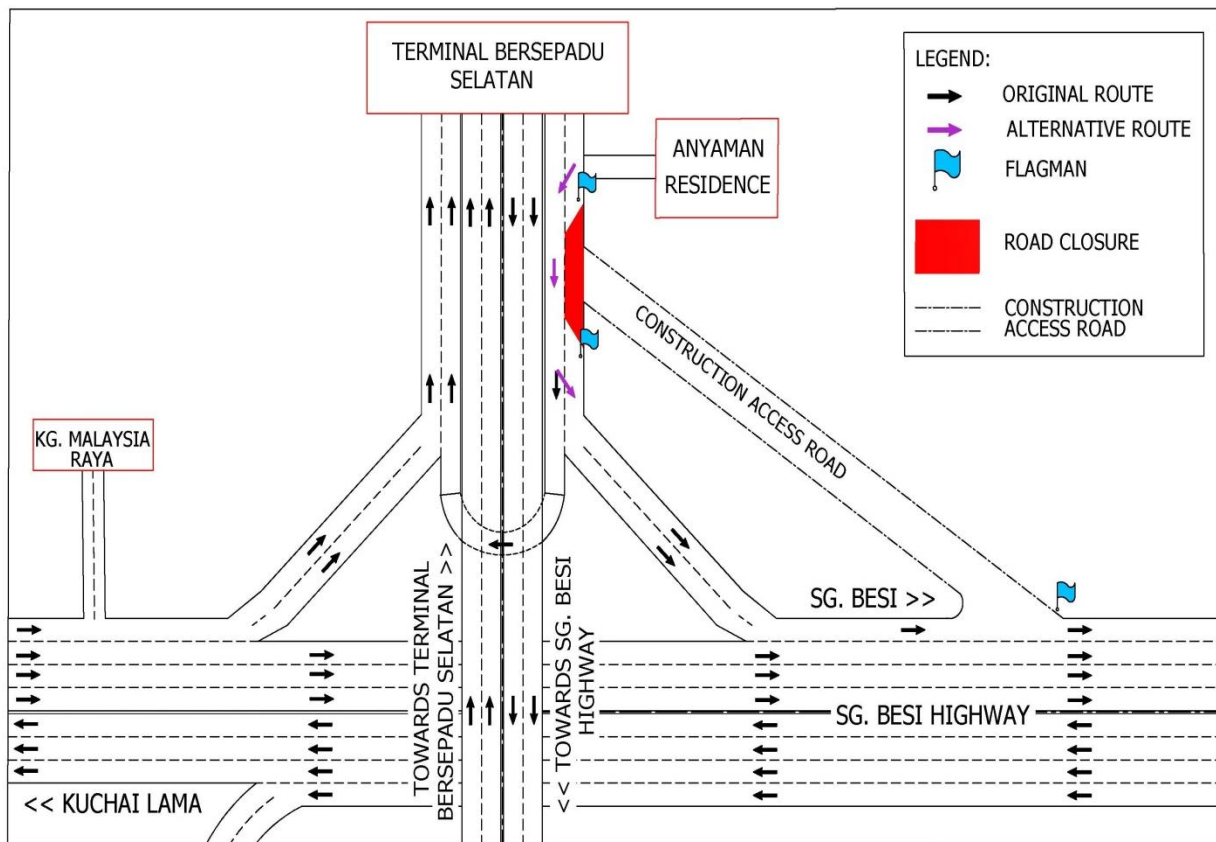
3. LANE CLOSURE BY STAGES ALONG JALAN TERMINAL SELATAN NEAR THE EXIT TO BESRAYA (SUNGAI BESI-BOUND)

Date	06 December 2017 - 15 December 2017
Time	12:00am – 5:30am
Duration	10 days
Reason	To facilitate interlocking pavement work and other related works for MRT SSP Line

There will be lane closure implemented by stages at the slip road of Jalan Terminal Selatan heading towards Lebuhraya Sungai Besi BESRAYA (Sungai Besi-bound), **from 06 December 2017 until 15 December 2017, 12:00pm – 5:30am, daily, intermittently.**

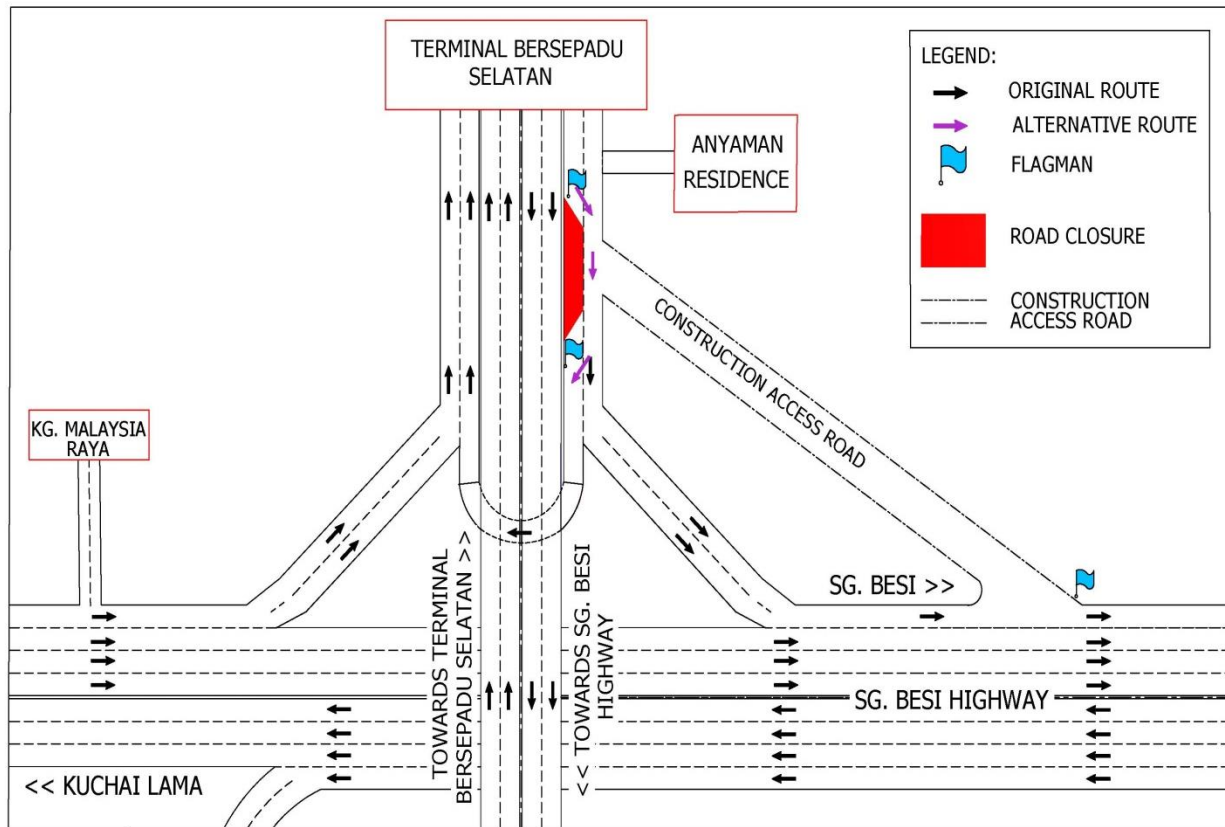
The traffic management plan involves the following closures:

Stage 1: Left-most lane closure near Terminal Bersepadu Selatan before slip road to Lebuhraya Sungai Besi BESRAYA (Sungai Besi-bound).



MAP 3 : STAGE 1 – LEFT MOST LANE CLOSURE ALONG JALAN TERMINAL SELATAN NEAR THE EXIT TO BESRAYA (SUNGAI BESI-BOUND)

Stage 2: Right lane closure near Terminal Bersepadu Selatan before slip road to Lebuhraya Sungai Besi BESRAYA (Sungai Besi-Bound).



MAP 3 : STAGE 2 – RIGHT LANE CLOSURE ALONG JALAN TERMINAL SELATAN NEAR THE EXIT TO BESRAYA (SUNGAI BESI-BOUND)

For media enquiries, please contact:

Anizam Bin Ali
Leanne Ann Susau

Tel: +6016 322 1486
Tel: +603 7493 3832

anizam.ali@wct.com.my
leanne@mgjv-kvmrt.com.my

MMC GAMUDA KVMRT (PDP SSP) SDN BHD (1117100-V)
Block A, Level 17, Menara Mustapha Kamal, PJ Trade Centre
No 8, Jalan PJU 8/8A, Bandar Damansara Perdana, 47820 Petaling Jaya
Selangor Darul Ehsan, Malaysia
T: +603-7494 2222 F: +603-7727 0222 www.mymrt.com.my