

**TRAFFIC ANNOUNCEMENT**

**UPDATES ON TRAFFIC MANAGEMENT PLAN FOR MRT SSP CONSTRUCTION ALONG JALAN KUALA SELANGOR, PERSIARAN APEC AND LEBUHRAYA PINTASAN DENGKIL FT29, PUTRAJAYA  
22 NOVEMBER 2017**

**1. CONTINUATION OF LANE CLOSURES ALONG JALAN KUALA SELANGOR (SUNGAI BULOH-BOUND AND KEPONG-BOUND)**

<b>Date</b>	23 November 2017 – 22 December 2017
<b>Time</b>	24 hours
<b>Duration</b>	1 month
<b>Reason</b>	To facilitate loading/unloading material and open guard rail, site clearing and tree cutting, mapping and piloting, utilities relocation, temporary works - sheet pile and earth work, soil investigation, road widening and diversion, piling and pile cap, 33kV TNB cable relocation for MRT construction works

To facilitate our construction works, there will be continuation of lane closures along Jalan Kuala Selangor (Sungai Buloh-bound and Kepong-bound) from **23 November 2017 to 22 December 2017, intermittently.**

The traffic management plan involves the following closures:

**Closure A (24 hours):**

- i. Left-most lane closure along Jalan Kuala Selangor (Sungai Buloh-bound) at KM47 before the ramp up to Sierramas.
- ii. Left-most lane closure along Jalan Kuala Selangor (Sungai Buloh-bound) after the ramp up to Sierramas for a stretch 100 metres; Left lane closure on the ramp up to Sierramas for a stretch 100 metres
- iii. Left lane closure towards Sungai Buloh toll for a stretch of 100 metres.
- iv. Left lane closure on the ramp up to Sierramas and IGB International School (Kepong-bound) for a stretch of 100 metres.

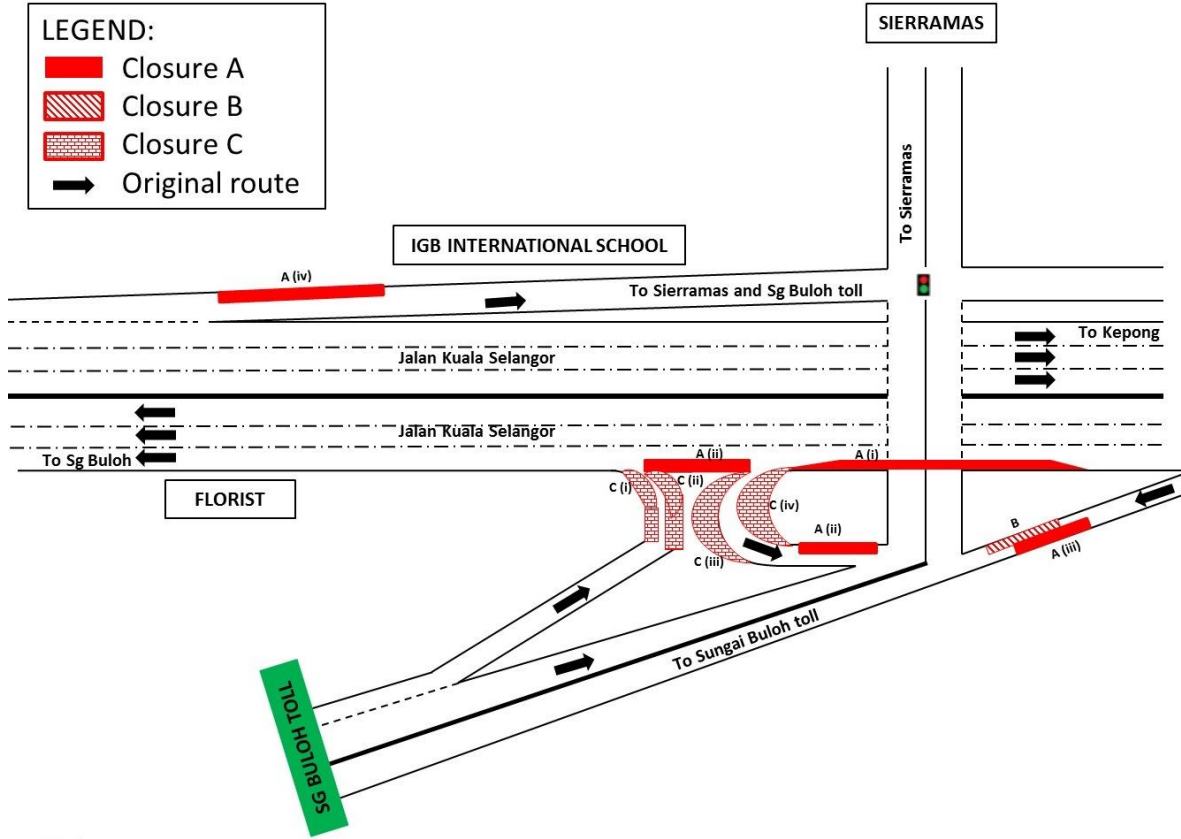
**Closure B (24 hours):** Right lane closure towards Sungai Buloh toll for a stretch of 100 metres. During this closure, Closure A (iii) will not take place.

**Closure C (10pm – 6am):**

- i. Partial left lane closure after Sungai Buloh toll before joining into Jalan Kuala Selangor (Sungai Buloh-bound) for a stretch of 80 metres.
- ii. Partial right lane closure after Sungai Buloh toll before joining into Jalan Kuala Selangor (Sungai Buloh-bound) for a stretch of 80 metres.
- iii. Partial right lane closure on the ramp up to Sierramas for a stretch 50 metres.
- iv. Partial left lane closure on the ramp up to Sierramas for a stretch of 50 metres.

**LEGEND:**

- Closure A
- Closure B
- Closure C
- Original route



**MAP 1: CONTINUATION OF LANE CLOSURES ALONG JALAN KUALA SELANGOR (SUNGAI BULOH-BOUND AND KEPONG-BOUND)**

## 2. CONTINUATION OF LANE CLOSURES BY STAGES ALONG PERSIARAN APEC (NORTH-BOUND AND SOUTH-BOUND)

<b>Date</b>	23 November 2017 – 11 April 2018
<b>Time</b>	8am – 5pm & 8am – 1pm
<b>Duration</b>	4 Months 19 Days
<b>Reason</b>	To facilitate site clearing, piloting, soil investigation, relocation of utilities, landscape and road widening for MRT construction works

There will be long term lane closures along Persiaran APEC for a stretch of 600 metres from **23 November 2017 to 11 April 2018** by stages at the following time:

- Monday to Friday: 8.00am - 5.00pm
- Saturday: 8.00am - 1.00pm

The traffic management plan involves the following stage:

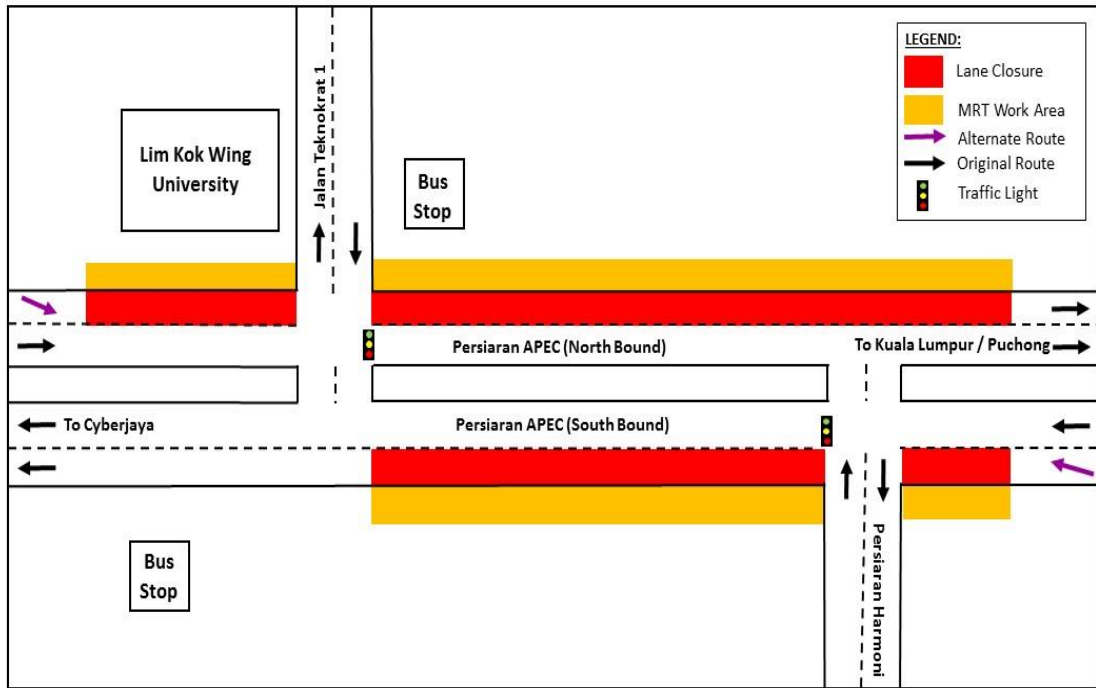
### A. Stage 1

- Left lane closures along Persiaran APEC (both bounds) for road widening works. During these closures, motorists will be diverted to use the right lane (as indicated in PURPLE arrows).
- The closures will be implemented by stages and at any one time there will be one (1) lane made available for motorists.

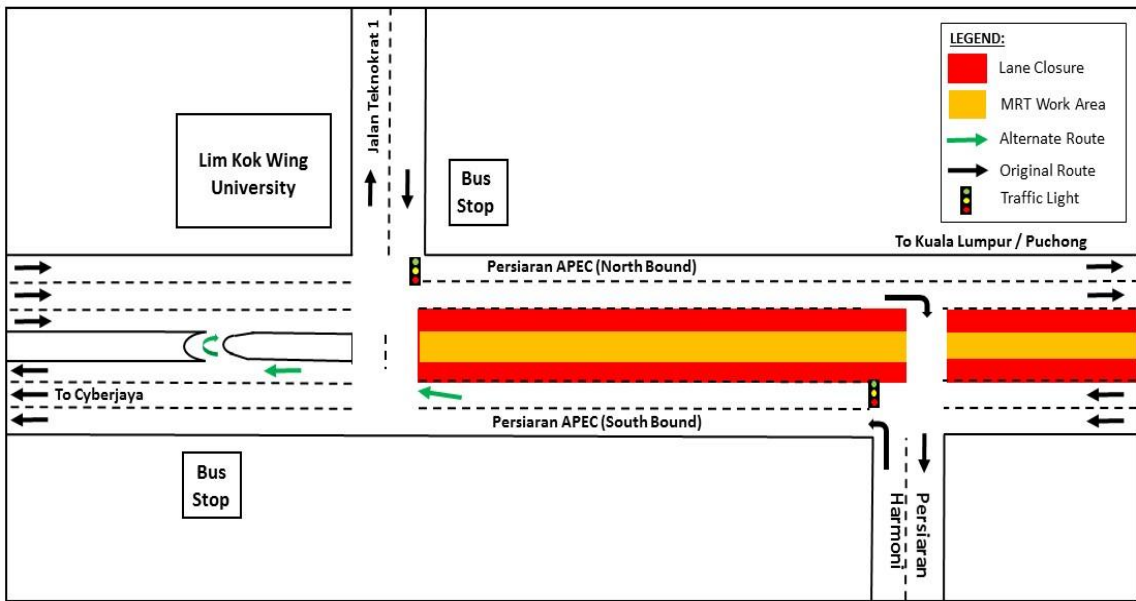
### B. Stage 2 (Permanent): Stage 2 will be activated upon completion of road widening work during Stage 1

- Right lane closure along Persiaran APEC (North-bound and South-bound). During this closure, motorists will be diverted to use the middle lane.
- Closure of right turning to Kuala Lumpur/Puchong from Persiaran Harmoni. During this closure, motorists from Persiaran Harmoni will only be able to turn left, proceed straight and make the U-Turn in front of Lim Kok Wing to go to Kuala Lumpur / Puchong (as indicated in GREEN arrows). The U-Turn will be made available upon completion of Stage 1.

The closures will be implemented by stages and at any one time there will be one (1) lane made available for motorists.



**MAP 2: CONTINUATION OF LANE CLOSURES BY STAGES ALONG PERSIARAN APEC (NORTH-BOUND AND SOUTH-BOUND) – STAGE 1**



**MAP 2: CONTINUATION OF LANE CLOSURES BY STAGES ALONG PERSIARAN APEC (NORTH-BOUND AND SOUTH-BOUND) – STAGE 2**

### 3. CONTINUATION OF LANE CLOSURES ALONG LEBUHRAYA PINTASAN DENGKIL FT29, PUTRAJAYA (NORTH-BOUND AND SOUTH-BOUND)

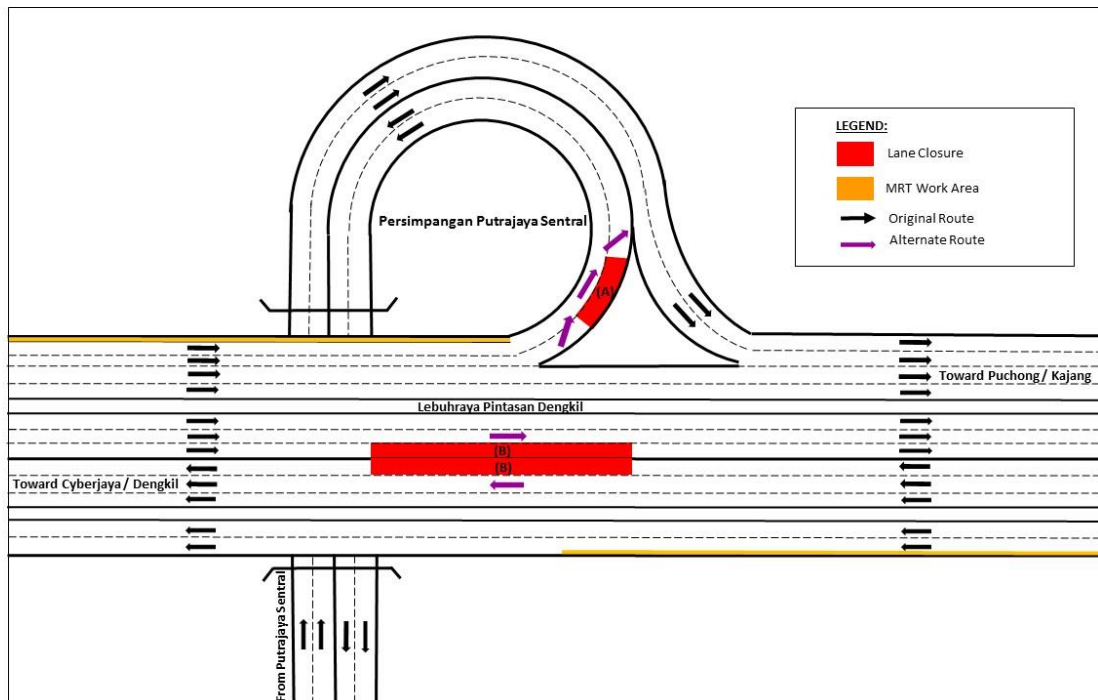
<b>Date</b>	24 November 2017 - 23 January 2018
<b>Time</b>	7am to 7pm & 8pm to 6am
<b>Duration</b>	2 Months
<b>Reason</b>	To facilitate mobilization of machineries, site clearing, soil investigation, piloting, road widening and pier construction for MRT Project

There will be continuation of lane closures along Lebuhraya Pintasan Dengkil FT29 (North-bound and South-bound) from **24 November 2017 to 23 January 2018, 7am - 7pm and 8pm - 6am daily**. Following are the traffic management plan that will take place:

**Closure A:** Right lane closure on the ramp going down to Putrajaya Sentral (Persimpangan Putrajaya Sentral). During this period, there will also be closure of motorcycle lane for a stretch of 100 metres to facilitate the pier construction along Persimpangan Putrajaya Sentral. At the closure stretch, motorists using the motorcycle lane will be diverted to slow lane.

**Closure B:** Right-most lane closures for a stretch of 200 metres heading towards Puchong/Kajang and Cyberjaya/Dengkil. At the closure stretch, motorists will be diverted to middle lane of both bounds.

All other lanes along Lebuhraya Pintasan Dengkil will not be affected.



**MAP 3: CONTINUATION OF LANE CLOSURES ALONG LEBUHRAYA PINTASAN DENGKIL FT29, PUTRAJAYA (NORTH-BOUND AND SOUTH-BOUND)**

**For media enquiries, please contact:**

Mohd Sofie Hassan (**Item 1**) Tel: +6019 228 3004  
Mohd Hisham Abu Bakar (**Item 2-3**) Tel: +6017 447 2767  
Leanne Ann Susau (**Item 1-3**) Tel: +603 7493 3832

sofie@sunway.com.my  
hisham.bakar@mrcb.com  
leanne@mgjv-kvmrt.com.my

**MMC GAMUDA KVMRT (PDP SSP) SDN BHD** (1117100-V)  
Block A, Level 17, Menara Mustapha Kamal, PJ Trade Centre  
No 8, Jalan PJU 8/8A, Bandar Damansara Perdana, 47820 Petaling Jaya  
Selangor Darul Ehsan, Malaysia  
T: +603-7494 2222 F: +603-7727 0222 [www.mymrt.com.my](http://www.mymrt.com.my)