

TRAFFIC ANNOUNCEMENT
CONTINUATION OF LONG-TERM LANE CLOSURES FROM KM47 TO KM52 ALONG JALAN KUALA SELANGOR
(SUNGAI BULOH-BOUND AND KEPONG-BOUND)
13 OCTOBER 2017

Date	15 October 2017 - 31 December 2017
Time	10:00pm – 6:00am; 10:00pm – 10:00am
Duration	2 ½ months
Reason	To facilitate loading/unloading material and open guard rail, site clearing and tree cutting, piloting and mapping, utilities relocation, temporary works (sheet pile and earth work), bore piling work, pile cap, and survey works for MRT construction

There will be a continuation of long-term one lane closure by stages for a stretch of 500 metres along Jalan Kuala Selangor (Sungai Buloh-bound and Kepong-bound) from **15 October 2017 to 31 December 2017**, as per the following time, **intermittently**.

- **Sunday to Friday (10:00pm – 6:00am)**
- **Saturday and public holidays (10:00pm – 10:00am)**

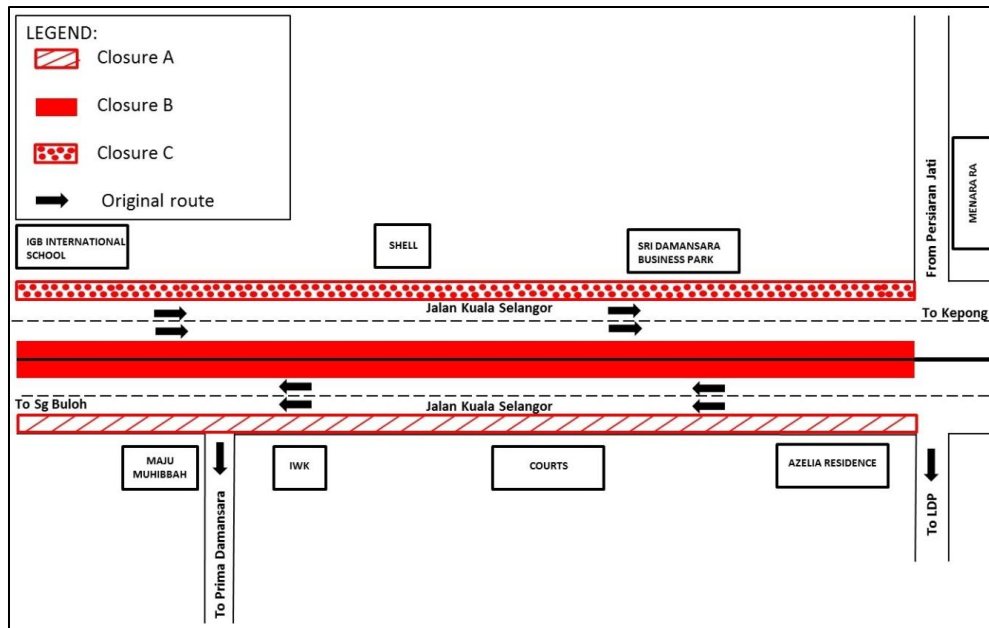
The traffic management plan involves the following closures:

Closure A: Left-most lane closure along Jalan Kuala Selangor (Sungai Buloh-bound).

Closure B: Right-most lane closure along Jalan Kuala Selangor (Sungai Buloh-bound and Kepong-bound).

Closure C: Left-most lane closure along Jalan Kuala Selangor (Kepong-bound).

The closures are in stages and at any one time there will be two (2) lanes available for motorists on both bounds.



For media enquiries, please contact:

Mohd Sofie Hassan

Tel: +6019 228 3004

sofie@sunway.com.my

Leanne Ann Susau

Tel: +603 7493 3832

leanne@mgjv-kvmrt.com.my

MMC GAMUDA KVMRT (PDP SSP) SDN BHD (1117100-V)
 Block A, Level 17, Menara Mustapha Kamal, PJ Trade Centre
 No 8, Jalan PJU 8/8A, Bandar Damansara Perdana, 47820 Petaling Jaya
 Selangor Darul Ehsan, Malaysia
 T: +603-7494 2222 F: +603-7727 0222 www.kvmrt.com.my