

TRAFFIC ANNOUNCEMENT

UPDATES ON TRAFFIC MANAGEMENT PLAN FOR MRT SSP CONSTRUCTION ALONG JALAN KUALA SELANGOR AND PUTRAJAYA

21 SEPTEMBER 2017

1. CONTINUATION OF LANE CLOSURES ALONG JALAN KUALA SELANGOR (SUNGAI BULOH-BOUND AND KEPONG-BOUND)

Date	23 September 2017 – 22 October 2017
Time	24 hours
Duration	1 month
Reason	To facilitate loading/unloading material and open guard rail, site clearing and tree cutting, mapping and piloting, utilities relocation, temporary works - sheet pile and earth work, soil investigation, road widening and diversion, piling and pile cap, 33kv TNB cable relocation for MRT Construction Works

To facilitate the MRT SSP Line construction works, there will be a continuation of lane closures along Jalan Kuala Selangor (Sungai Buloh-bound and Kepong-bound) from **23 September 2017 to 22 October 2017, intermittently**. The traffic management plan involves the following closures:

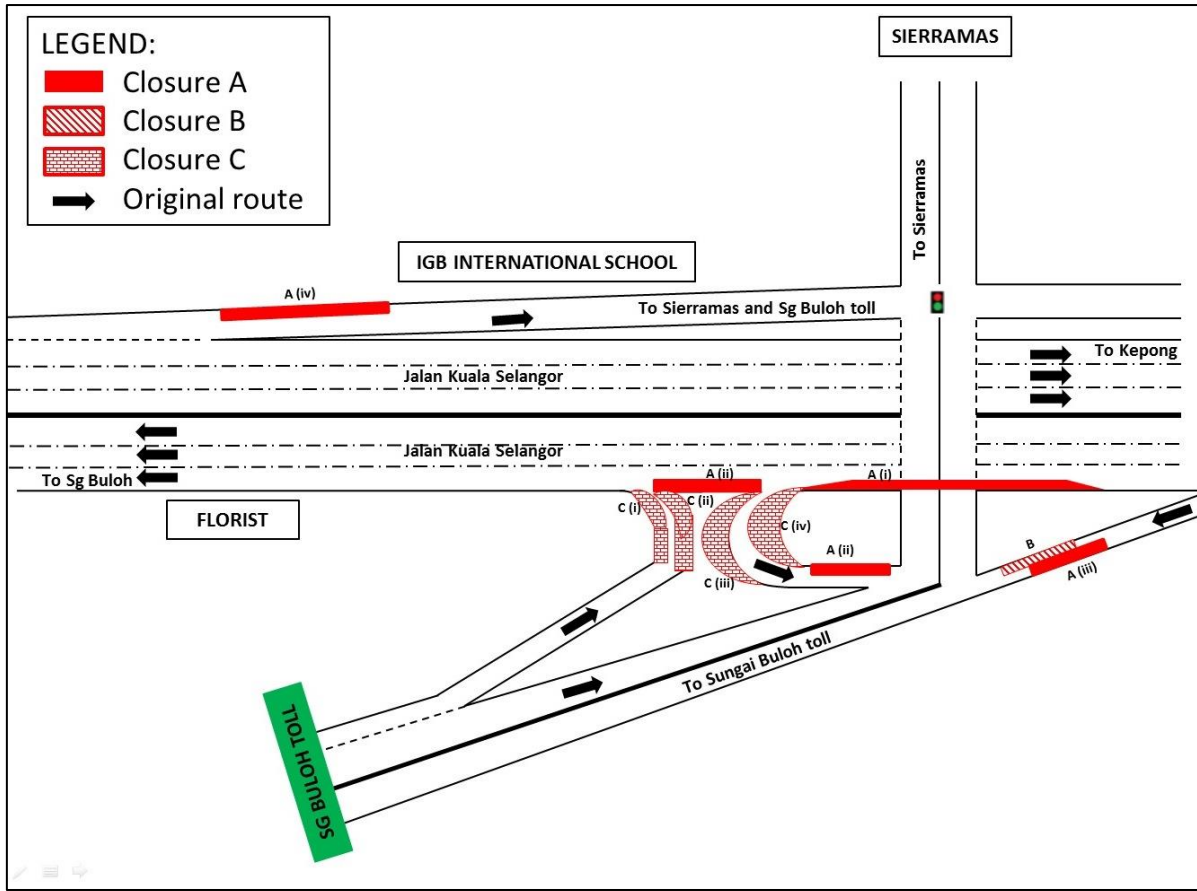
Closure A (24 hours):

- i. Left-most lane closure along Jalan Kuala Selangor (Sungai Buloh-bound) at KM47 before the ramp up to Sierramas.
- ii. Left-most lane closure along Jalan Kuala Selangor (Sungai Buloh-bound) after the ramp up to Sierramas for a stretch 100 metres; Left lane closure on the ramp up to Sierramas for a stretch 100 metres
- iii. Left lane closure towards Sungai Buloh toll for a stretch of 100 metres.
- iv. Left lane closure on the ramp up to Sierramas and IGB International School (Kepong-bound) for a stretch of 100 metres.

Closure B (24 hours): Right lane closure towards Sungai Buloh toll for a stretch of 100 metres. During this closure, Closure A (iii) will not take place.

Closure C (10pm – 6am):

- i. Partial left lane closure after Sungai Buloh toll before joining into Jalan Kuala Selangor (Sungai Buloh-bound) for a stretch of 80 metres.
- ii. Partial right lane closure after Sungai Buloh toll before joining into Jalan Kuala Selangor (Sungai Buloh-bound) for a stretch of 80 metres.
- iii. Partial right lane closure on the ramp up to Sierramas for a stretch 50 metres.
- iv. Partial left lane closure on the ramp up to Sierramas for a stretch of 50 metres.



MAP 1 : CONTINUATION OF LANE CLOSURES ALONG JALAN KUALA SELANGOR (SUNGAI BULOH-BOUND AND KEPONG-BOUND)

2. CONTINUATION OF LANE CLOSURES ALONG LEBUHRAYA PINTASAN DENGKIL FT29, PUTRAJAYA (NORTH-BOUND AND SOUTH-BOUND)

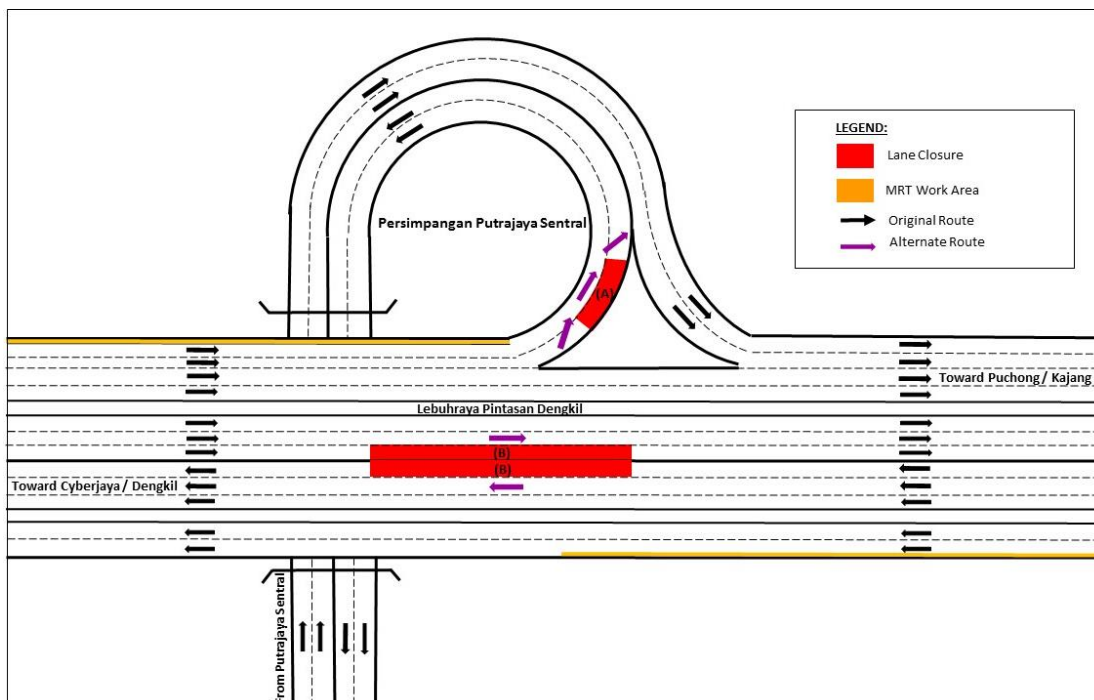
Date	24 September 2017 - 23 November 2017
Time	7:00am to 7:00pm & 8:00pm to 6:00am
Duration	2 months
Reason	To facilitate mobilization of machineries, site clearing, soil investigation, piloting, road widening and pier construction for MRT Project

There will be continuation of lane closures along Lebuhraya Pintasan Dengkil FT29 (North-bound and South-bound) from **24 September 2017 to 23 November 2017, 7am - 7pm and 8pm - 6am daily**. Following are the traffic management plan that will take place:

Closure A: Right lane closure on the ramp going down to Putrajaya Sentral (Persimpangan Putrajaya Sentral). During this period, there will also be closure of motorcycle lane for a stretch of 100 metres to facilitate the pier construction along Persimpangan Putrajaya Sentral. At the closure stretch, motorists using the motorcycle lane will be diverted to slow lane.

Closure B: Right-most lane closures for a stretch of 200 metres heading towards Puchong/Kajang and Cyberjaya/Dengkil. At the closure stretch, motorists will be diverted to middle lane of both bounds.

All other lanes along Lebuhraya Pintasan Dengkil will not be affected.



MAP 2 : CONTINUATION OF LANE CLOSURES ALONG LEBUHRAYA PINTASAN DENGKIL FT29, PUTRAJAYA (NORTH-BOUND AND SOUTH-BOUND)

For media enquiries, please contact:

Mohd Sofie Hassan **(Item 1)**

Tel: +6019 228 3004

sofie@sunway.com.my

Mohd Hisham Abu Bakar **(Item 2)**

Tel: +6017 447 276

hisham.bakar@mrcb.com

Leanne Ann Susau **(Item 1-2)**

Tel: +603 7493 3832

leanne@mgjv-kvmrt.com.my

MMC GAMUDA KVMRT (PDP SSP) SDN BHD (1117100-V)

Block A, Level 17, Menara Mustapha Kamal, PJ Trade Centre

No 8, Jalan PJU 8/8A, Bandar Damansara Perdana, 47820 Petaling Jaya

Selangor Darul Ehsan, Malaysia

T: +603-7494 2222 F: +603-7727 0222 www.mymrt.com.my