

TRAFFIC ANNOUNCEMENT
UPDATES ON TRAFFIC MANAGEMENT PLAN FOR MRT SSP CONSTRUCTION ALONG JALAN
SULTAN AZLAN SHAH AND JALAN KUALA SELANGOR
29 AUGUST 2017

1. ROAD REALIGNMENT AND RIGHT-MOST LANE CLOSURES ALONG JALAN SULTAN AZLAN SHAH (KL-BOUND AND KEPONG-BOUND)

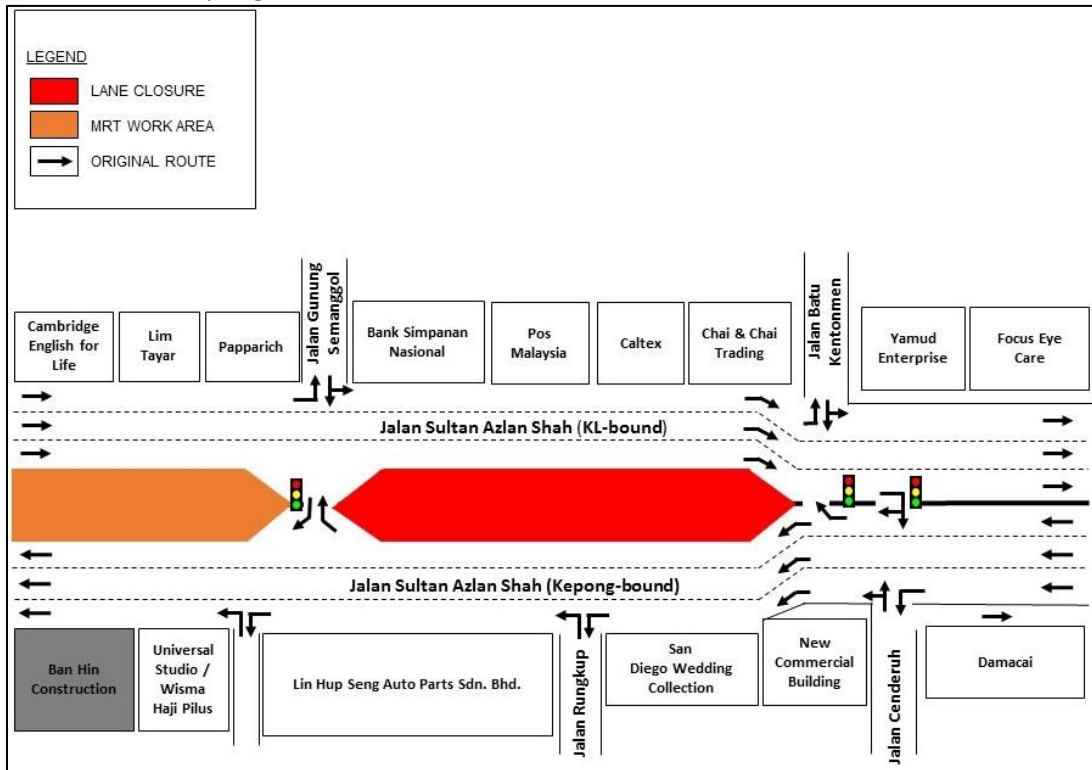
Date	30 August 2017 – 30 August 2019
Time	24 hours
Duration	2 years
Reason	To facilitate loading/unloading of material, road realignment, platform preparation, drainage works, soil investigation, bore piling works, pier construction and launching works for construction of MRT SSP Line.

There will be road realignment works and closure of right-most lane by stages along Jalan Sultan Azlan Shah (KL-bound and Kepong-bound), near Pos Malaysia from **30 August 2017 onwards, 24-hours** to facilitate the construction of MRT SSP Line piers. The traffic management plan involves the following stages:

Stage 1: Jalan Sultan Azlan Shah (Kepong-bound) from Jalan Cenderuh to Lin Hup Seng Auto Parts Sdn Bhd.

Stage 2: Jalan Sultan Azlan Shah (KL-bound) from Jalan Gunung Semanggol to Jalan Batu Kentonmen.

During these closures, there will be three (3) lanes made available for motorists on Jalan Sultan Azlan Shah (KL-bound and Kepong-bound).



MAP 1 : ROAD REALIGNMENT AND RIGHT-MOST LANE CLOSURES ALONG JALAN SULTAN AZLAN SHAH (KL-BOUND AND KEPONG-BOUND)

2. CONTINUATION OF LONG-TERM LANE CLOSURES FROM KM47 TO KM52 ALONG JALAN KUALA SELANGOR (SUNGAI BULOH-BOUND AND KEPONG-BOUND)

Date	01 September 2017 - 31 December 2017
Time	10:00pm – 6:00am; 10:00pm – 8:00am
Duration	4 months
Reason	To facilitate loading/unloading material and open guard rail, site clearing and tree cutting, piloting and mapping, utilities relocation, temporary works (sheet pile and earth work), bore piling work, pile cap, and survey works for MRT construction

There will be a continuation of long-term one lane closure by stages for a stretch of 500 metres along Jalan Kuala Selangor (Sungai Buloh-bound and Kepong-bound) from **1 September 2017 to 31 December 2017**, as per the following time, **intermittently**.

- **Sunday to Friday (10:00pm – 6:00am)**
- **Saturday and public holidays (10:00pm – 8:00am)**

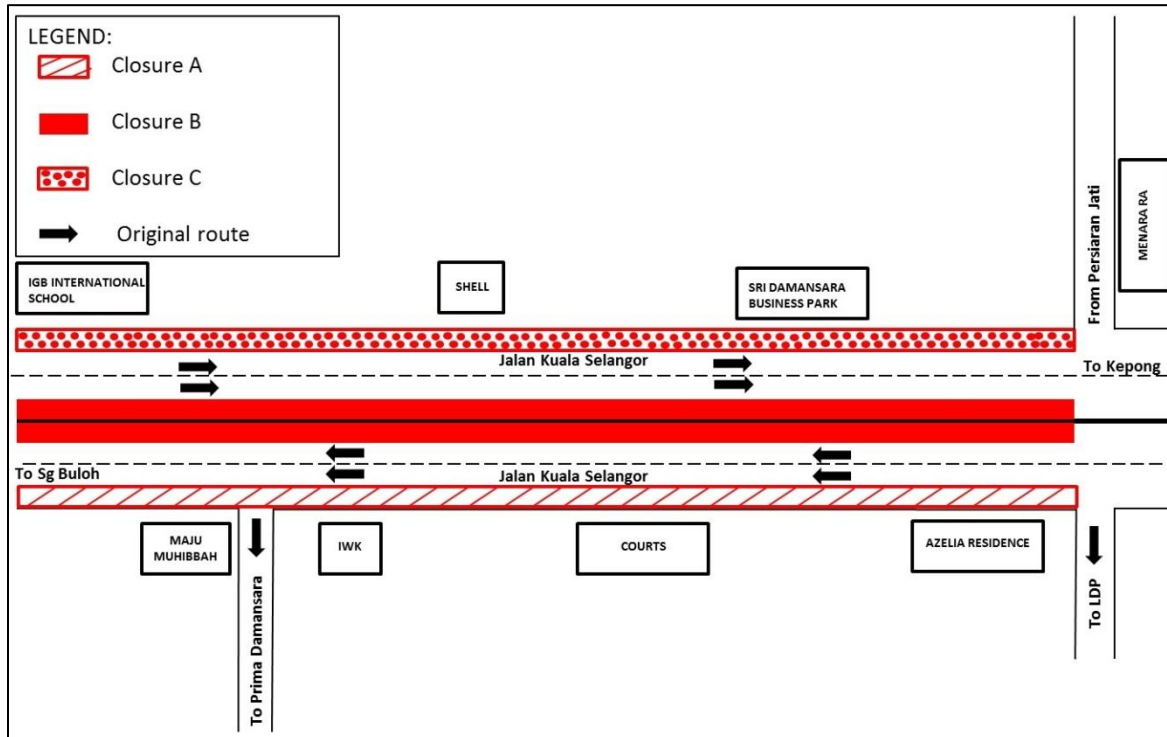
The traffic management plan involves the following closures:

Closure A: Left-most lane closure along Jalan Kuala Selangor (Sungai Buloh-bound).

Closure B: Right-most lane closure along Jalan Kuala Selangor (Sungai Buloh-bound and Kepong-bound).

Closure C: Left-most lane closure along Jalan Kuala Selangor (Kepong-bound).

The closures are in stages and at any one time there will be two (2) lanes available for motorists on both bounds.



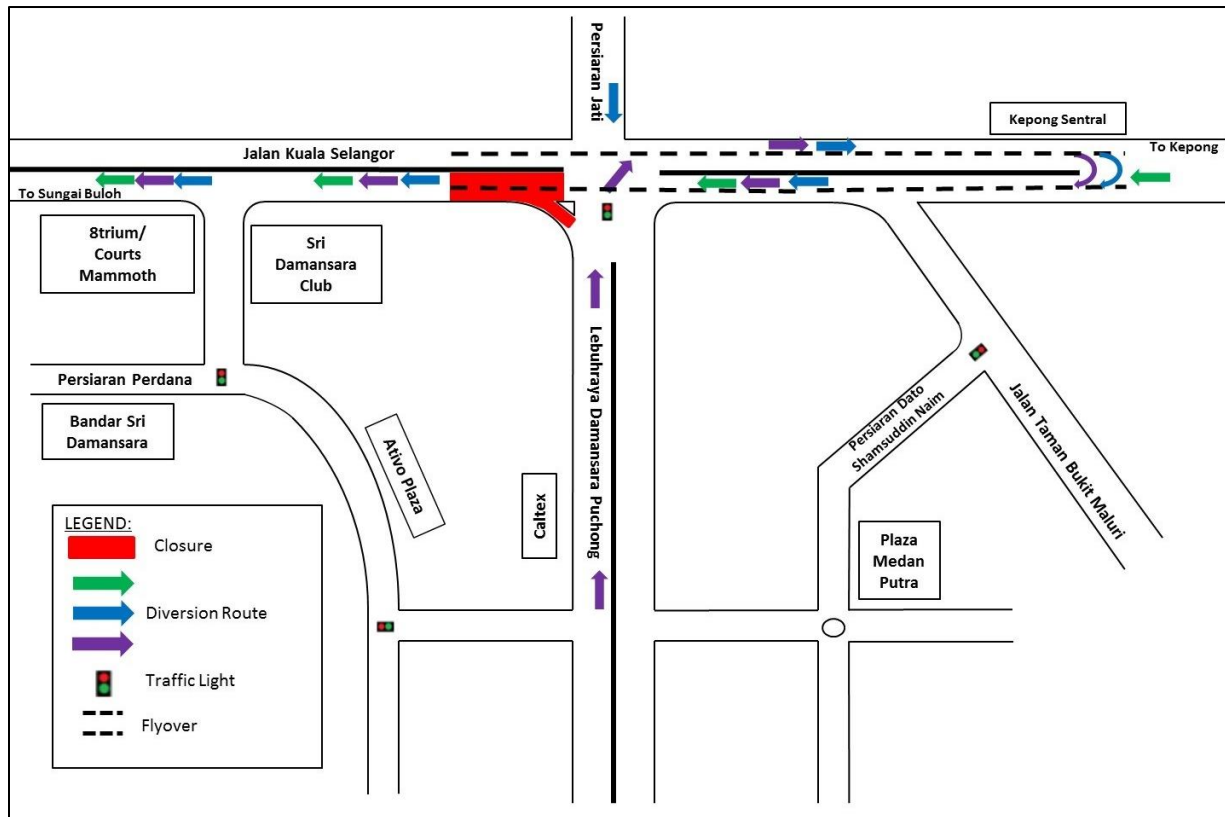
MAP 2 : CONTINUATION OF LONG-TERM LANE CLOSURES FROM KM47 TO KM52 ALONG JALAN KUALA SELANGOR (SUNGAI BULOH-BOUND AND KEPONG-BOUND)

3. CONTINUATION OF SLIP ROAD CLOSURE TO JALAN KUALA SELANGOR FROM LEBUHRAYA DAMANSARA PUCHONG (SUNGAI BULOH-BOUND)

Date	01 September 2017 – 30 September 2017
Time	10:00PM – 6:00AM
Duration	1 month
Reason	To facilitate survey works, mapping and piloting and utilities relocation for MRT construction works

There will be a continuation of slip road closure to Jalan Kuala Selangor from Lebuhraya Damansara Puchong (LDP) from **01 September 2017 – 30 September 2017, 10:00PM-6:00AM daily**. During the closure, the following diversions will take place:

- **Motorists from LDP heading to Sungai Buloh** can turn right at the LDP/DUKE 2 Interchange traffic light to connect to Jalan Kuala Selangor (Kepong-bound) and make a U-Turn after Kepong Sentral KTM Station underneath the MRR2 flyover before joining the ramp up to Jalan Kuala Selangor (Sungai Buloh-bound) (as indicated in **PURPLE** arrows in map).
- **Motorists from Persiaran Jati heading to Sungai Buloh** will be diverted to turn left to Jalan Kuala Selangor (Kepong-bound) and then make a U-Turn after Kepong Sentral KTM Station underneath the MRR2 flyover before joining the ramp up to Jalan Kuala Selangor (Sungai Buloh-bound) (as indicated in **BLUE** arrows in map).
- **Motorists from Kepong heading to Sungai Buloh** are advised to use the ramp up to Jalan Kuala Selangor (Sungai Buloh-bound) (as indicated in **GREEN** arrows in map).



MAP 3 : CONTINUATION OF SLIP ROAD CLOSURE TO JALAN KUALA SELANGOR FROM LEBUHRAYA DAMANSARA PUCHONG (SUNGAI BULOH-BOUND)

For media enquiries, please contact:

Juliet Choong Wai Gaik **(Item 1)**

Tel: +6012 601 0318

julietchoong@ijm.com

Mohd Sofie Hassan **(Item 2-3)**

Tel: +6019 228 3004

sofie@sunway.com.my

Leanne Ann Susau **(Item 1-3)**

Tel: +603 7493 3832

leanne@mgjv-kvmrt.com.my

MMC GAMUDA KVMRT (PDP SSP) SDN BHD (1117100-V)

Block A, Level 17, Menara Mustapha Kamal, PJ Trade Centre
No 8, Jalan PJU 8/8A, Bandar Damansara Perdana, 47820 Petaling Jaya
Selangor Darul Ehsan, Malaysia

T: +603-7494 2222 F: +603-7727 0222 www.mymrt.com.my