

**TRAFFIC ANNOUNCEMENT
 UPDATES ON TRAFFIC MANAGEMENT PLAN FOR MRT SSP CONSTRUCTION
 ALONG JALAN KEPONG
 25 AUGUST 2017**

1. LANE CLOSURES ALONG JALAN KEPONG (SUNGAI BULOH-BOUND AND JINJANG-BOUND)

Date	28 August 2017 - 27 November 2017
Time	11pm – 6am
Duration	91 days
Reason	To facilitate utilities detection, utilities relocation and tree cutting for MRT construction works

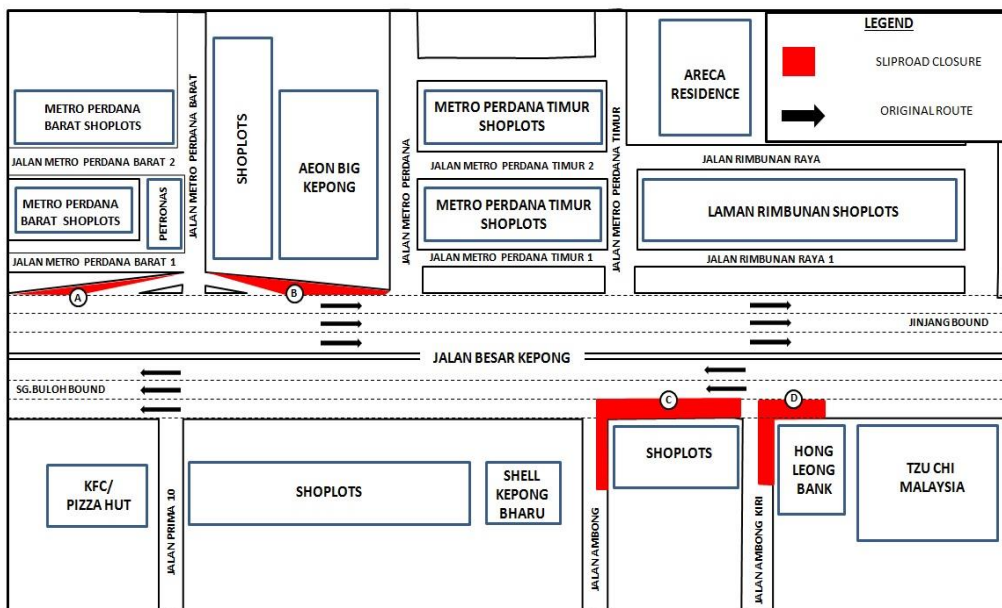
There will be a continuation of lane closures along Jalan Besar Kepong (Sungai Buloh-bound and Jinjang-bound) starting **from 28 August 2017 until 27 November, 11.00 pm to 6.00 am daily, intermittently** and at any one time, there will be three (3) lanes made available (Closure A and B) and two (2) lanes available (Closure C and D) for motorists. The traffic management plan involves the following closures :

Closure A : Partial lane closure for a stretch of 200 metres starting from Jalan Besar Kepong until the slip road entering Jalan Metro Perdana Barat (Jinjang-bound).

Closure B : Partial lane closure for a stretch of 150 metres starting from the slip road exiting Jalan Metro Perdana Barat heading towards Jinjang (Jinjang-bound).

Closure C : Partial lane closure along Jalan Besar Kepong (Sungai Buloh-bound) for a stretch of 100 metres starting from the junction of Jalan Ambong Kiri until the junction of Jalan Ambong.

Closure D : Partial lane closure along Jalan Besar Kepong (Sungai Buloh-bound) for a stretch of 100 metres starting in front of Hong Leong Bank entering Jalan Ambong Kiri.



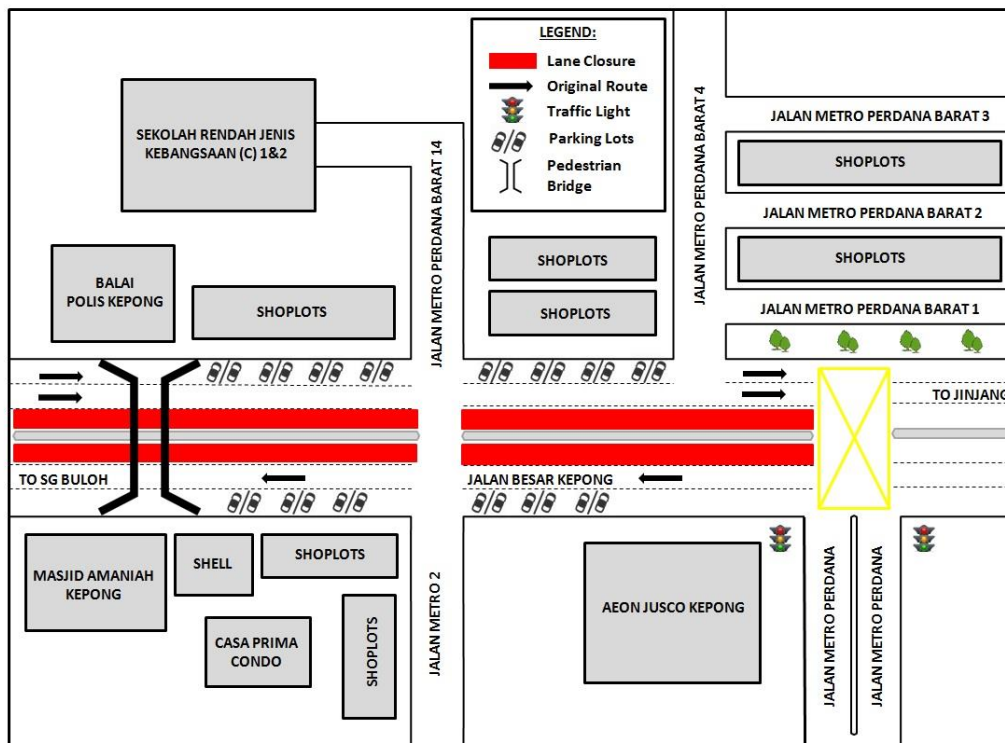
MAP 1 : LANE CLOSURES ALONG JALAN KEPONG (SUNGAI BULOH-BOUND AND JINJANG-BOUND)

2. CONTINUATION OF LANE CLOSURES ALONG JALAN KEPONG, PEKAN LAMA KEPONG AND METRO PERDANA (SUNGAI BULOH - BOUND AND JINJANG - BOUND)

Date	28 August 2017 - 27 November 2017
Time	11pm – 6am
Duration	91 days
Reason	To facilitate utilities detection and relocation along Jalan Kepong for MRT construction works

There will be a continuation of lane closures along Jalan Kepong (Sungai Buloh-bound and Jinjang-bound) for a stretch of 600 metres **from 28 August 2017 to 27 November 2017, 11.00pm until 6.00am, intermittently.**

During this closure, at any one time there will be one (1) lane made available for motorists at both bounds.



MAP 2 : CONTINUATION OF LANE CLOSURES ALONG JALAN KEPONG, PEKAN LAMA KEPONG AND METRO PERDANA (SUNGAI BULOH - BOUND AND JINJANG - BOUND)

3. CONTINUATION OF LANE AND PARKING BAY CLOSURES ALONG JALAN KEPONG (JINJANG-BOUND)

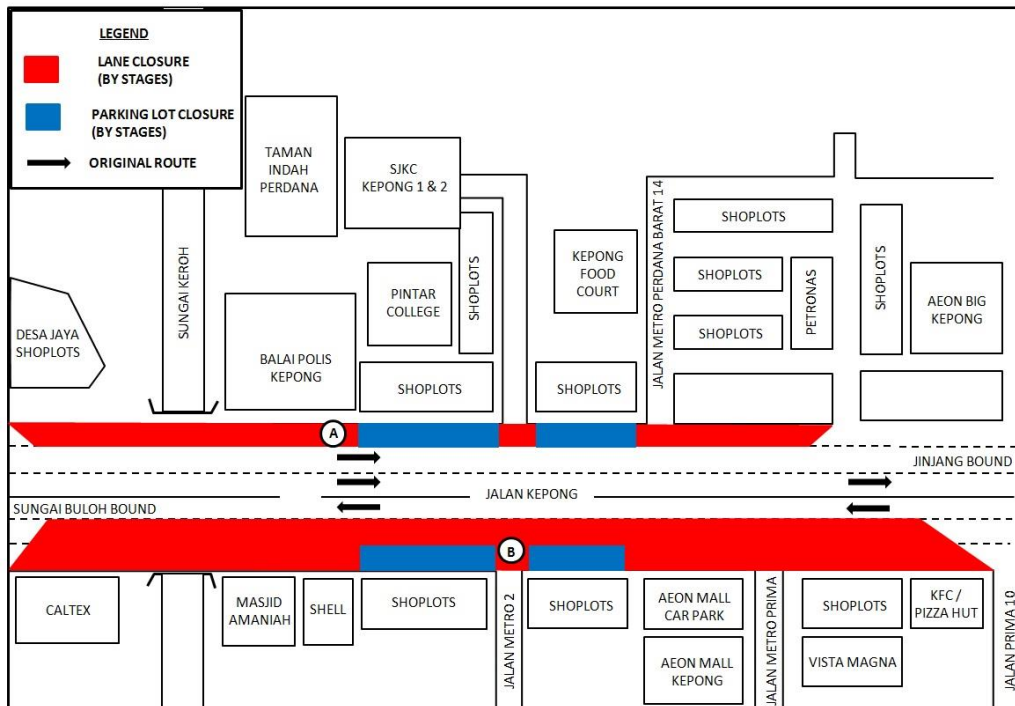
Date	28 August 2017 - 27 November 2017
Time	11pm – 6am
Duration	91 days
Reason	To facilitate utilities detection and relocation for MRT construction works

There will be continuation of lane closures along Jalan Kepong (Jinjang-bound and Sungai Buloh-bound) at Desa Jaya and Pekan Lama Kepong **starting from 28 August 2017 until 27 November 2017, 11.00pm to 6.00am (daily) intermittently**. The traffic management plan involves the following closures :

Closure A : Left-most lane and parking bay closure by stages for a total stretch of 300 metres starting from the Pekan Lama Kepong shop lots towards Metro Perdana Barat area (Jinjang-bound).

Closure B : Two left lane closures and parking bay closure by stages for a total stretch of 500 metres starting from Casa Magna KFC/Pizza Hut, Metro Perdana until Caltex Kepong , Desa Jaya (Sungai Buloh-bound).

At any one time there will only be a one closure. During the closure, there will be two (2) lanes made available for Jinjang-bound traffic and one (1) lane made available for Sungai Buloh-bound traffic.



MAP 3 : CONTINUATION OF LANE AND PARKING BAY CLOSURES ALONG JALAN KEPONG (JINJANG-BOUND)

4. CONTINUATION OF LANE CLOSURES ALONG JALAN KEPONG (SUNGAI BULOH-BOUND AND JINJANG-BOUND)

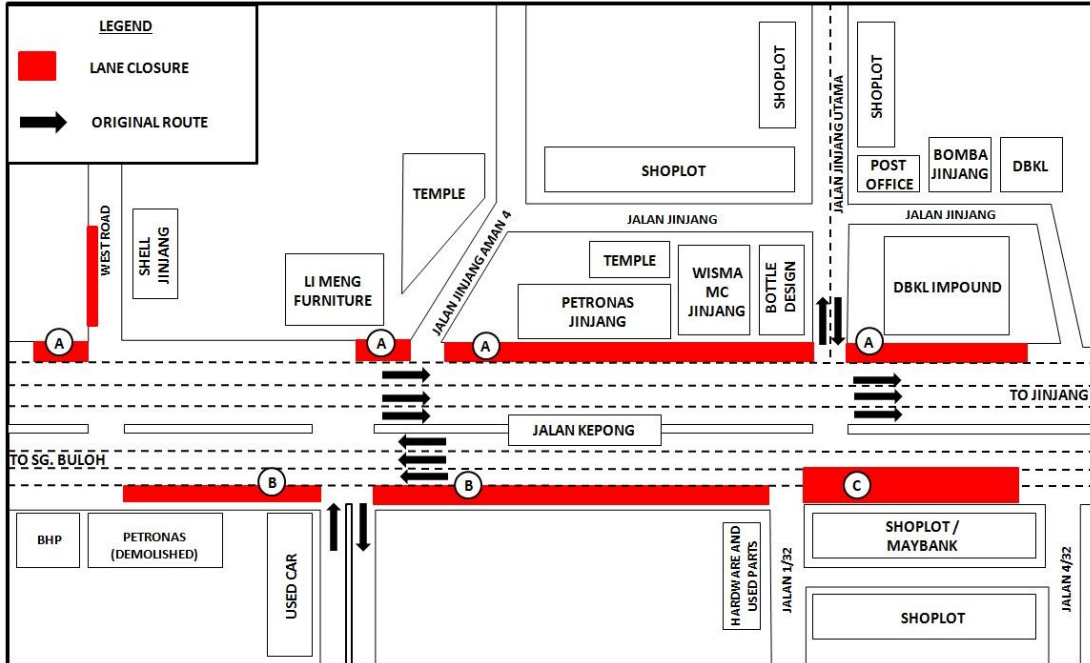
Date	28 August 2017 - 27 November 2017
Time	11pm – 6am
Duration	91 days
Reason	To facilitate utilities detection and relocation works and tree cutting along Jalan Kepong for MRT construction works

There will be continuation of lane closures along Jalan Kepong (Sungai Buloh-bound and Jinjang-bound) starting **from 28 August 2017 until 27 November 2017, 11.00pm to 6.00am daily, intermittently**. The traffic management plan involves the following closures :

Closure A : Left-most lane closure by stages for a total stretch of 600 metres starting from West Road towards the DBKL Impound Yard, Jalan Jinjang (Jinjang-bound).

Closure B : Left-most lane closure by stages for a total stretch of 500 metres starting from Jalan 1/32 until BHP petrol station (Sungai Buloh-bound).

Closure C : Two lane closure for a total stretch of 150 metres starting from Jalan 4/32 until Jalan 1/32 (Sungai Buloh-bound).



MAP 4 : CONTINUATION OF LANE CLOSURES ALONG JALAN KEPONG (SUNGAI BULOH-BOUND AND JINJANG-BOUND)

For media enquiries, please contact:

Zaini Ghazali
 Leanne Ann Susau

Tel: +6012 328 1821
 Tel: +603 7493 3832

zainighazali@azrb.com
 leanne@mgjv-kvmrt.com.my

MMC GAMUDA KVMRT (PDP SSP) SDN BHD (1117100-V)
 Block A, Level 17, Menara Mustapha Kamal, PJ Trade Centre
 No 8, Jalan PJU 8/8A, Bandar Damansara Perdana, 47820 Petaling Jaya
 Selangor Darul Ehsan, Malaysia
 T: +603-7494 2222 F: +603-7727 0222 www.mymrt.com.my