

TRAFFIC ANNOUNCEMENT
UPDATES ON TRAFFIC MANAGEMENT PLAN FOR MRT SSP CONSTRUCTION ALONG PERSIARAN
INDUSTRI AND JALAN KUALA SELANGOR
29 JUNE 2017

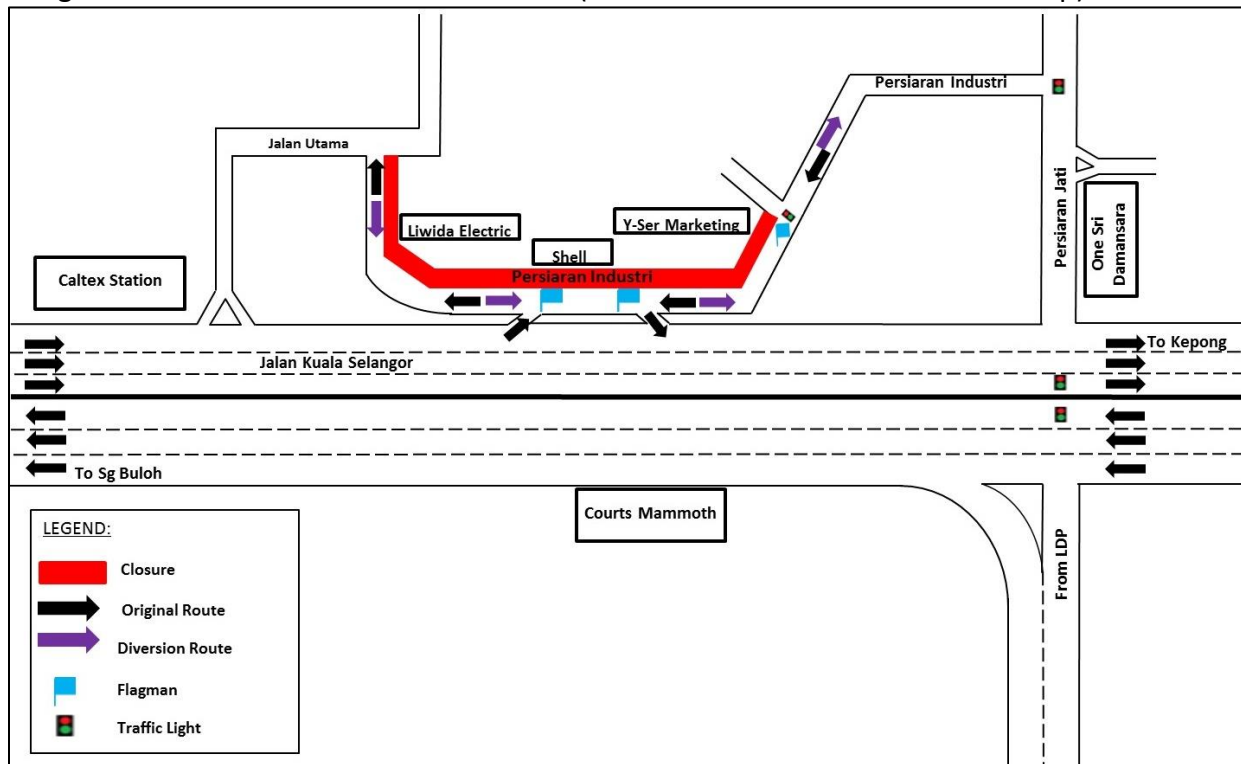
1. CONTINUATION OF LONG-TERM LANE CLOSURE ALONG PERSIARAN INDUSTRI (KEPONG-BOUND)

Date	30 June 2017 – 25 August 2017
Time	10:00pm – 6:00am; 10:00pm – 10:00am
Duration	1 month 25 days
Reason	To facilitate site clearing and tree cutting, mapping and piloting, utilities relocation and pipe jacking

There will be continuation of lane closure along Persiaran Industri (Kepong-bound) from **30 June 2017 to 25 August 2017**, as per the following time:

- **Sunday to Friday – 10:00pm – 6:00am**
- **Saturday – 10:00pm – 10:00am**

The lane closure will be implemented by stages for a stretch of 100 metres. During the closure, motorists using Persiaran Industri will be diverted to the opposite lane by flagmen at both end using "STOP and GO" method of traffic flow (as indicated in **PURPLE** arrows in map).



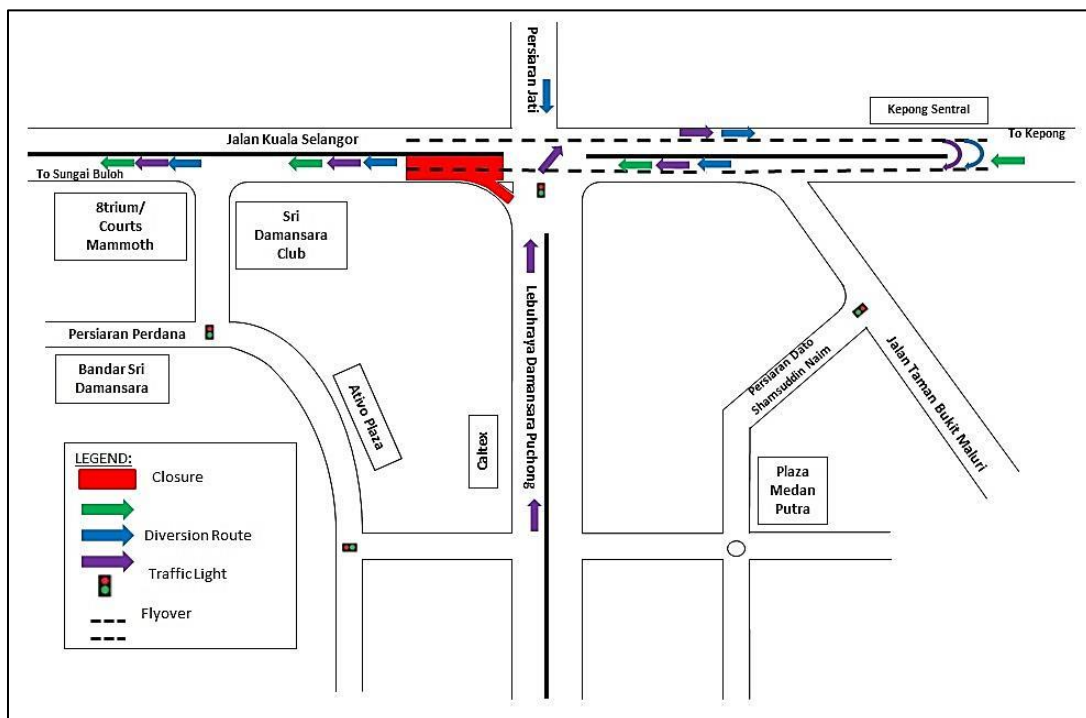
MAP 1 : CONTINUATION OF LONG-TERM LANE CLOSURE ALONG PERSIARAN INDUSTRI (KEPONG-BOUND)

2. CONTINUATION OF SLIP ROAD CLOSURE TO JALAN KUALA SELANGOR FROM LEBUHRAYA DAMANSARA PUCHONG (SUNGAI BULOH-BOUND)

Date	01 July 2017 – 31 July 2017
Time	10:00pm – 6:00am
Duration	1 month
Reason	To facilitate survey works, mapping and piloting and utilities relocation for MRT construction works

There will be a continuation of slip road closure to Jalan Kuala Selangor from Lebuhraya Damansara Puchong (LDP) from **01 July 2017 – 31 July 2017, 10:00pm-6:00am daily**. During the closure, the following diversions will take place:

- **Motorists from LDP heading to Sungai Buloh** can turn right at the LDP/DUKE 2 Interchange traffic light to connect to Jalan Kuala Selangor (Kepong-bound) and make a U-Turn after Kepong Sentral KTM Station underneath the MRR2 flyover before joining the ramp up to Jalan Kuala Selangor (Sungai Buloh-bound) (as indicated in **PURPLE** arrows in map).
- **Motorists from Persiaran Jati heading to Sungai Buloh** will be diverted to turn left to Jalan Kuala Selangor (Kepong-bound) and then make a U-Turn after Kepong Sentral KTM Station underneath the MRR2 flyover before joining the ramp up to Jalan Kuala Selangor (Sungai Buloh-bound) (as indicated in **BLUE** arrows in map).
- **Motorists from Kepong heading to Sungai Buloh** are advised to use the ramp up to Jalan Kuala Selangor (Sungai Buloh-bound) (as indicated in **GREEN** arrows in map).



MAP 2 : CONTINUATION OF SLIP ROAD CLOSURE TO JALAN KUALA SELANGOR FROM LEBUHRAYA DAMANSARA PUCHONG (SUNGAI BULOH-BOUND)

For media enquiries, please contact:

Mohd Sofie Hassan

Tel: +6019 228 3004

sofie@sunway.com.my

Leanne Ann Susau

Tel: +603 7493 3832

leanne@mgjv-kvmrt.com.my

MMC GAMUDA KVMRT (PDP SSP) SDN BHD (1117100-V)

Block A, Level 17, Menara Mustapha Kamal, PJ Trade Centre

No 8, Jalan PJU 8/8A, Bandar Damansara Perdana, 47820 Petaling Jaya

Selangor Darul Ehsan, Malaysia

T: +603-7494 2222 F: +603-7727 0222 www.mymrt.com.my