

TRAFFIC ANNOUNCEMENT
UPDATES ON TRAFFIC MANAGEMENT PLAN FOR MRT CONSTRUCTION
AT CHERAS-KAJANG HIGHWAY
(KAJANG-BOUND AND KUALA LUMPUR BOUND)
8 JUNE 2017

1. CONTINUATION OF LANE CLOSURE AT KM 14.0 UNTIL KM 15.5 ON CHERAS-KAJANG HIGHWAY (KAJANG AND KUALA LUMPUR-BOUND) (INTERMITTENT CLOSURE)

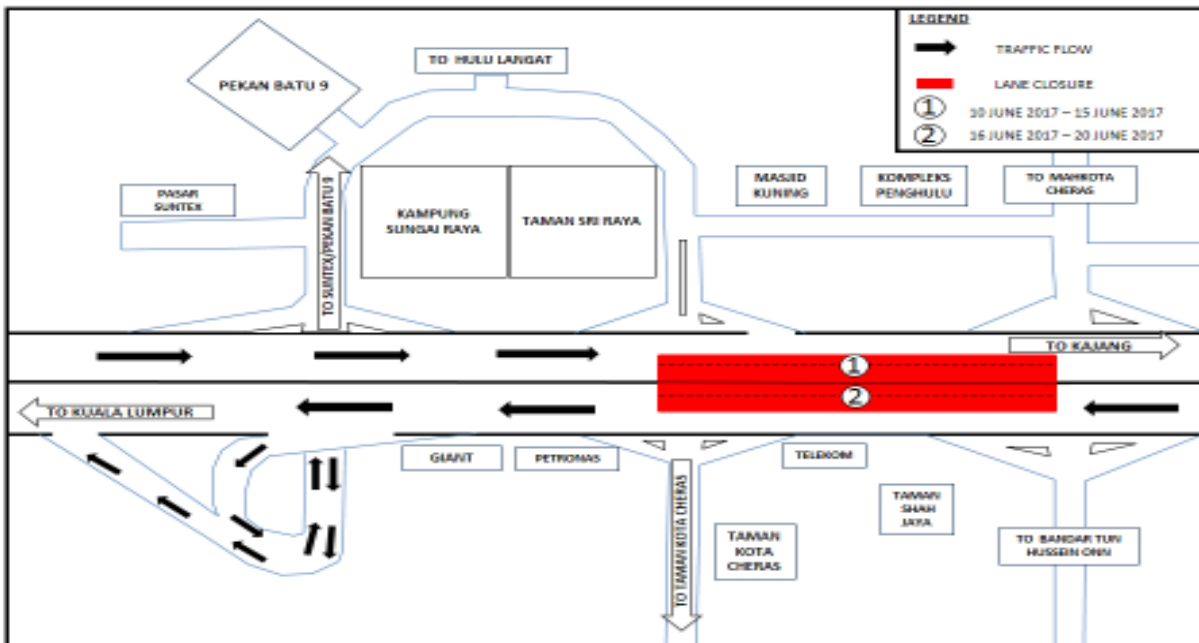
Date	10 June 2017 - 20 June 2017
Time	10:00PM - 5:00AM
Duration	10 Nights
Reasons	To facilitate the reinstatement of street lighting and permanent signage and road marking works.

There will be a continuation of two - lane closure at KM 14.0 until KM 15.5 for the stretch of 1.5 km on the Cheras-Kajang Highway from **10 June 2017 – 20 June 2017 from 10:00PM – 5:00AM**.

Closure 1 – Kajang-Bound (10 June 2017 – 15 June 2017)

Closure 2 – Kuala Lumpur-Bound (16 June 2017 – 20 June 2017)

Only two lanes will be closed at one time and during this closure, **FOUR lanes** will be reduced to **TWO lanes** for the stretch of **1.5 km** for both bounds (intermittent).



MAP 1: LANE CLOSURE AT KM 14.0 UNTIL KM 15.5 AT CHERAS-KAJANG HIGHWAY (KAJANG AND KUALA LUMPUR BOUND)

2. CONTINUATION OF LANE CLOSURE AT KM 13.3 UNTIL KM 14.7 CHERAS-KAJANG HIGHWAY (KAJANG-BOUND) (INTERMITTENT CLOSURE)

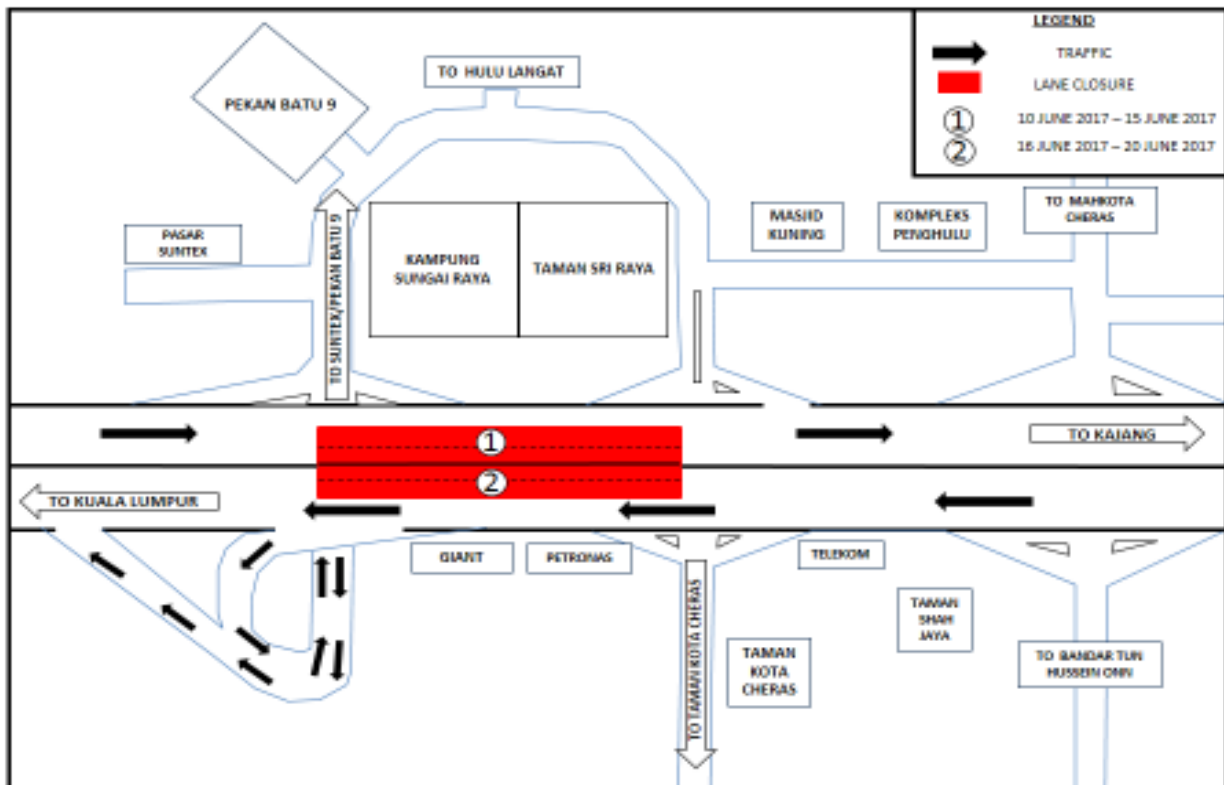
Date	10 June 2017 – 20 June 2017
Time	10:00PM - 5:00AM
Duration	10 Nights
Reasons	To facilitate the construction of link bridge, reinstatement of street lighting and permanent signage and road marking works.

There will be a continuation of two-lane closure at Cheras – Kajang Highway (Kajang and Kuala Lumpur bound) from **10 June 2017 until 20 June 2017** between **10:00PM - 5:00 AM** stretching from KM 13.3 until KM 14.7 for **1.4 km** (nearby Kampong Sungai Raya and Taman Sri Raya).

Closure 1 - Kajang Bound (10 June 2017 – 15 June 2017)

Closure 2 – Kuala Lumpur Bound (16 June 2017 – 20 June 2017)

Only two lanes will be closed at one time and during this closure, **FOUR lanes** will be reduced to **TWO lanes** for the stretch of **1.4 km** for both bounds (intermittent).



MAP 2: LANE CLOSURE AT KM 13.3 UNTIL KM 14.7 CHERAS-KAJANG HIGHWAY (KAJANG AND KUALA LUMPUR BOUND)

3. CONTINUATION OF PARTIAL LANE CLOSURE AT EXIT 701 – PGA INTERCHANGE ON CHERAS- KAJANG HIGHWAY (KAJANG-BOUND) (INTERMITTENT CLOSURE)

Date	10 June 2017 – 20 June 2017
Time	10:00AM - 4:00PM and 10:00PM - 5:00AM
Duration	10 Nights
Reasons	To facilitate reinstatement of street lighting, permanent signage and road marking works

There will be a partial lane closure at Exit 701 at the PGA Interchange (Kajang-bound and Kuala Lumpur-Bound) starting from **10 June 2017 until 20 June 2017** from **10:00AM – 4:00PM** and from **10:00 PM – 5:00AM**. The closure will be implemented in **TWO stages** as numbered in the map.

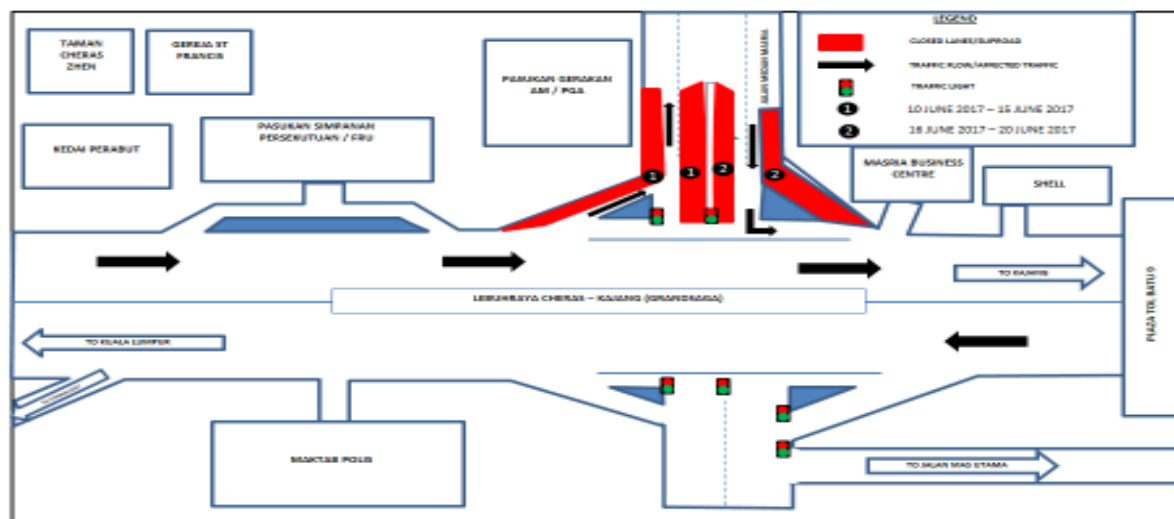
Stage 1, numbered as 1 (10 June 2017 – 15 June 2017)

- One lane closure on the left-most lane on the slip road entering PGA – Kajang Bound and Median 1 lane closure heading towards PGA Bound.

Stage 2, numbered as 2 (16 June 2017 – 20 June 2017)

- Slip road closure (Kajang Bound) from PGA and Median 1 lane closure heading towards Kuala Lumpur-Bound.

During this closure stages, motorists are advised to use the remaining opened lane on each bound. For the slip road closure during Stage 2, motorists (heading to Kajang) are advised to turn left after the traffic light (Kajang-Bound). No other road diversion will be implemented during this closure.



MAP 3: PARTIAL LANE CLOSURE AT EXIT 701 – PGA INTERCHANGE ON CHERAS KAJANG HIGHWAY (KAJANG BOUND)

4. CONTINUATION OF LANE CLOSURE AT KM 11.1 UNTIL KM 11.6 ON CHERAS -KAJANG HIGHWAY (KAJANG-BOUND) (INTERMITTENT CLOSURE)

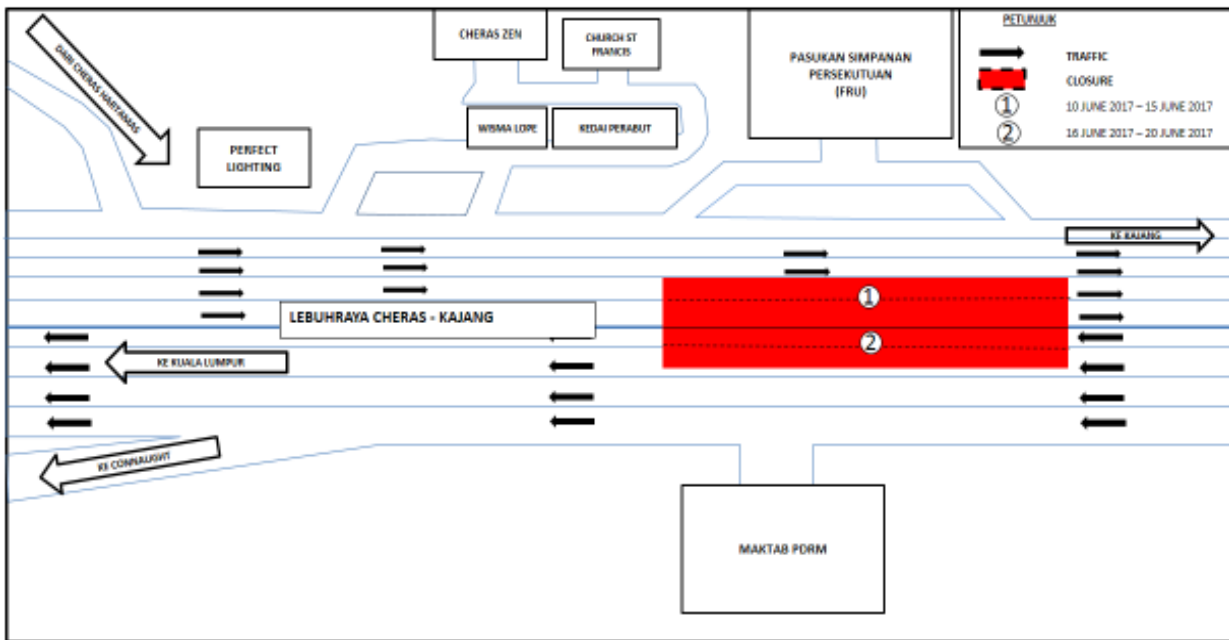
Date	10 June 2017 – 20 June 2017
Time	10:00PM - 5:00AM
Duration	10 Nights
Reasons	To facilitate the reinstatement of street lighting, reinstatement of permanent signage and road marking works.

There will be continuation of a two -lane closure at the Cheras-Kajang Highway (Kajang-Bound) from KM 11.1 until KM 11.6 for the stretch of **500 Meters**. The closure will be from slip road entering FRU Complex entering Cheras -Kajang Highway (Kajang-bound) until slip road exit FRU Complex at Batu 7, Cheras).

Closure 1 - Kajang Bound (10 June 2017 – 15 June 2017)

Closure 2 - Kuala Lumpur Bound (16 June 2017 – 20 June 2017)

Only two lanes will be closed at one time and during this closure, **FOUR lanes** will be reduced to **TWO lanes** for the stretch of **500 Meters** for both bounds (intermittent).



MAP 4: LANE CLOSURE AT KM 11.1 UNTIL KM 11.6 ON CHERAS KAJANG HIGHWAY (KAJANG AND KUALA LUMPUR BOUND)

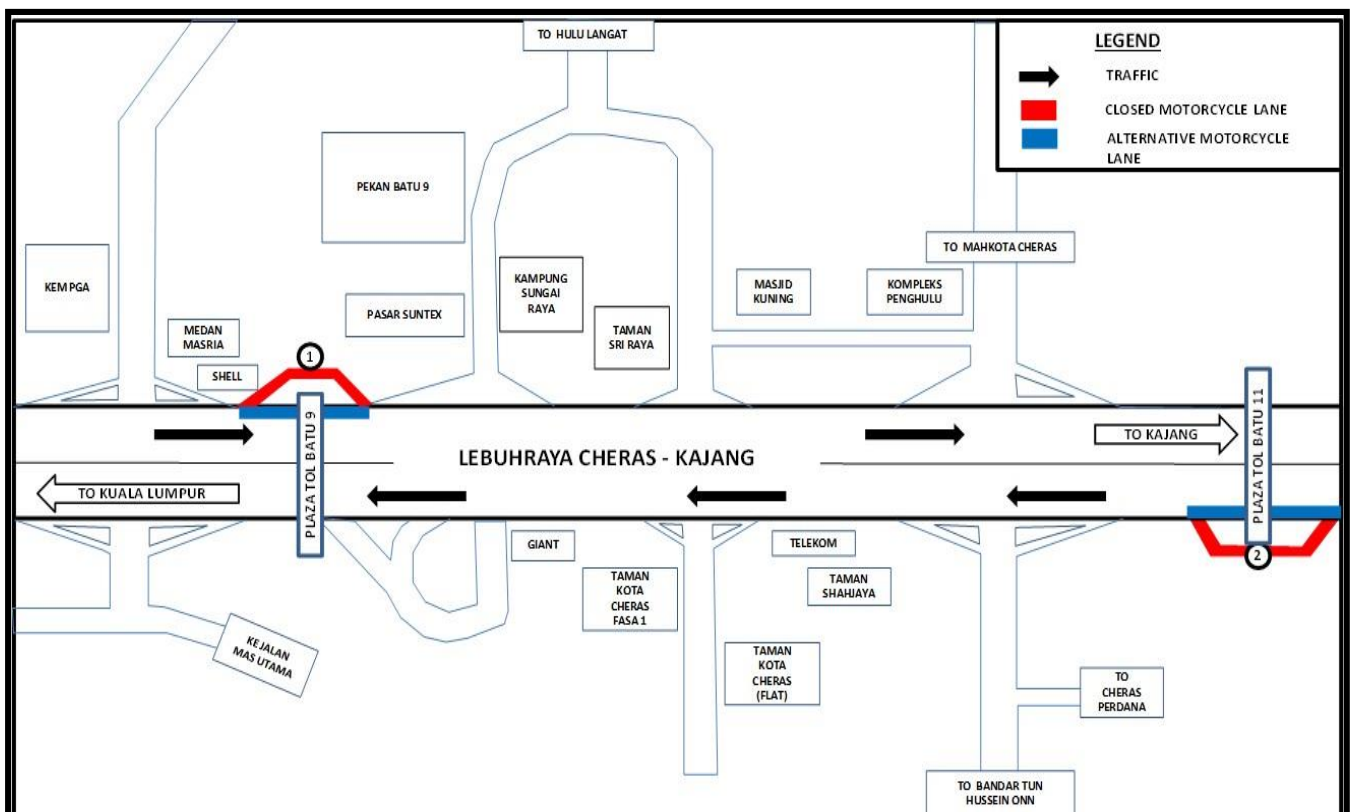
5. CONTINUATION OF MOTORCYCLE LANE CLOSURE AT BATU AND BATU 11 TOLLBOOTH ON CHERAS-KAJANG HIGHWAY (KAJANG-BOUND AND KUALA LUMPUR-BOUND) (INTERMITTENT CLOSURE)

Date	10 June 2017 – 30 June 2017
Time	9:00AM – 4:00PM and 10.00PM – 5.00AM
Duration	20 Days
Reasons	To facilitate the maintenance works at the BTMO MRT Station, reinstatement of street lighting and permanent signage and road marking works,

There will be a continuation of closure motorcycle lane closure at Batu 9 and Batu 11 Tollbooth on the Cheras-Kajang Highway (Kuala Lumpur & Kajang bound) from **10 June 2017 – 30 June 2017** starting from **9:00AM – 4:00PM** and from **10.00PM – 5.00PM**. The closures will be as follow:

Closure 1: Closure of motorcycle lane at the Batu 9 Tollbooth of Cheras – Kajang Highway (Kajang-bound). During this closure, all motorcyclists are advised to use the left-most lane near the toll booth as indicated **BLUE** in the appended map.

Closure 2: Closure of motorcycle lane at the Batu 11 Tollbooth of Cheras – Kajang Highway (Kuala Lumpur-bound) During this closure, motorcyclist are advised to use the left-most lane near the toll booth as an alternate route (as indicated **BLUE**).



MAP 5: MOTORCYCLE LANE CLOSURE AT BATU 9 AND BATU 11 TOLLBOOTH ON CHERAS -KAJANG HIGHWAY (KAJANG AND KUALA LUMPUR-BOUND)

6. CONTINUATION OF SLIP ROAD CLOSURE AT THE EXIT 702 AND EXIT 703 ON CHERAS-KAJANG HIGHWAY (INTERMITTENT CLOSURE)

Date	10 June 2017 – 30 June 2017
Time	10:00PM - 5:00AM
Duration	20 Nights
Reasons	To facilitate the maintenance works for Taman Suntex MRT Station and Sri Raya MRT Station, reinstatement of street lighting, reinstatement of permanent signage, road resurfacing (milling & pavement) and road marking works.

There will be a continuation of slip road closures at Exit 702 and Exit 703 (Kajang-bound and Kuala Lumpur-bound), Cheras-Kajang Highway from **10 June 2017 – 30 June 2017** starting from **10:00PM – 5:00AM**. These closures **will not be conducted simultaneously**.

Closure A (Exit 702, Hulu Langat Interchange, Kajang Bound)

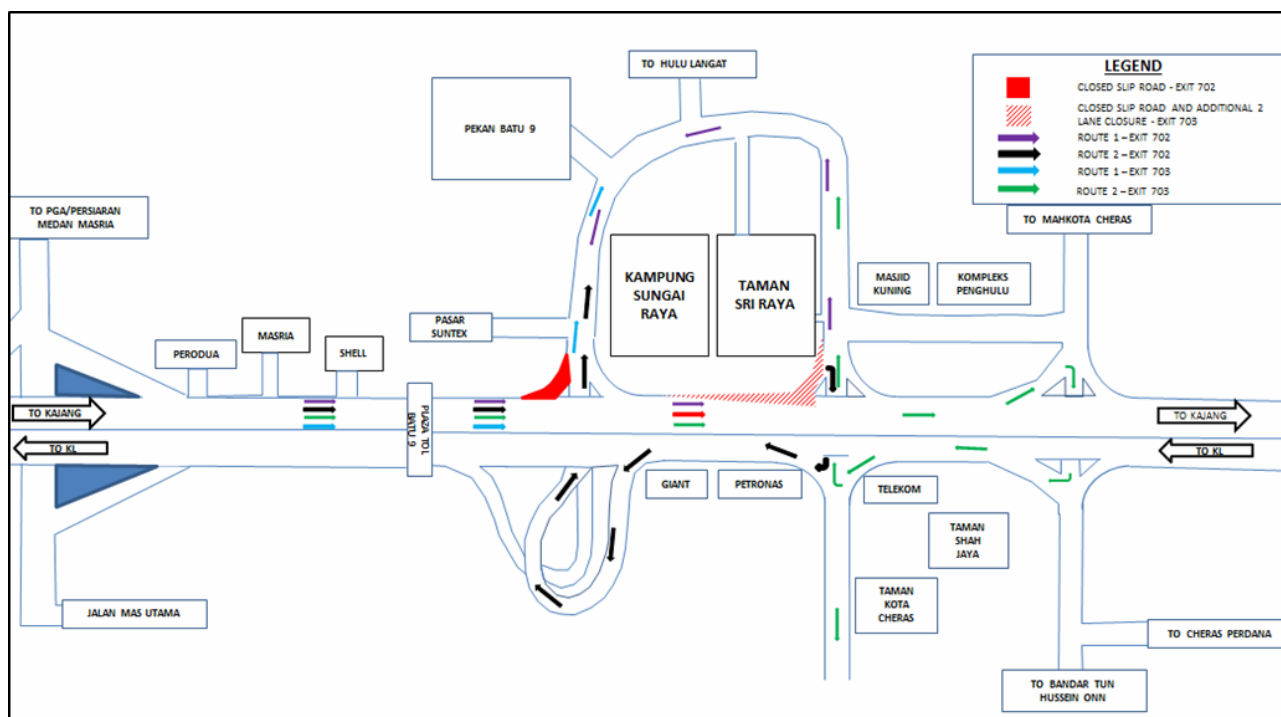
- Motorists from Kuala Lumpur heading towards Hulu Langat/Pekan Batu 9 will have to use Exit 703 (TELEKOM Interchange) entering Jalan Hulu Langat and proceed to Pekan Batu 9/Hulu Langat/Taman Suntex as indicated in **PURPLE** in the appended map,

OR

- Make a U-Turn at Exit 703 (entering Cheras-Kajang Highway – Lumpur Bound) and take Exit 702 Interchange entering Taman Suntex/Pekan Batu 9 as indicated in **BLACK** in the appended map.

Closure B (Exit 703, Telekom Interchange, Kajang Bound)

- Motorists from Kuala Lumpur heading towards Pekan Batu 9/ JalanCheras / Hulu Langat will have to turn left at Exit 702 as indicated in **BLUE** in the map.
- Motorists from Kuala Lumpur heading towards Taman Kota Cheras will be directed to make a U-turn at Bandar Tun Hussein Onn Interchange (Exit 704) and use slip road at Exit 703 (Taman Kota Cheras-bound) as indicated in **GREEN** in the appended map



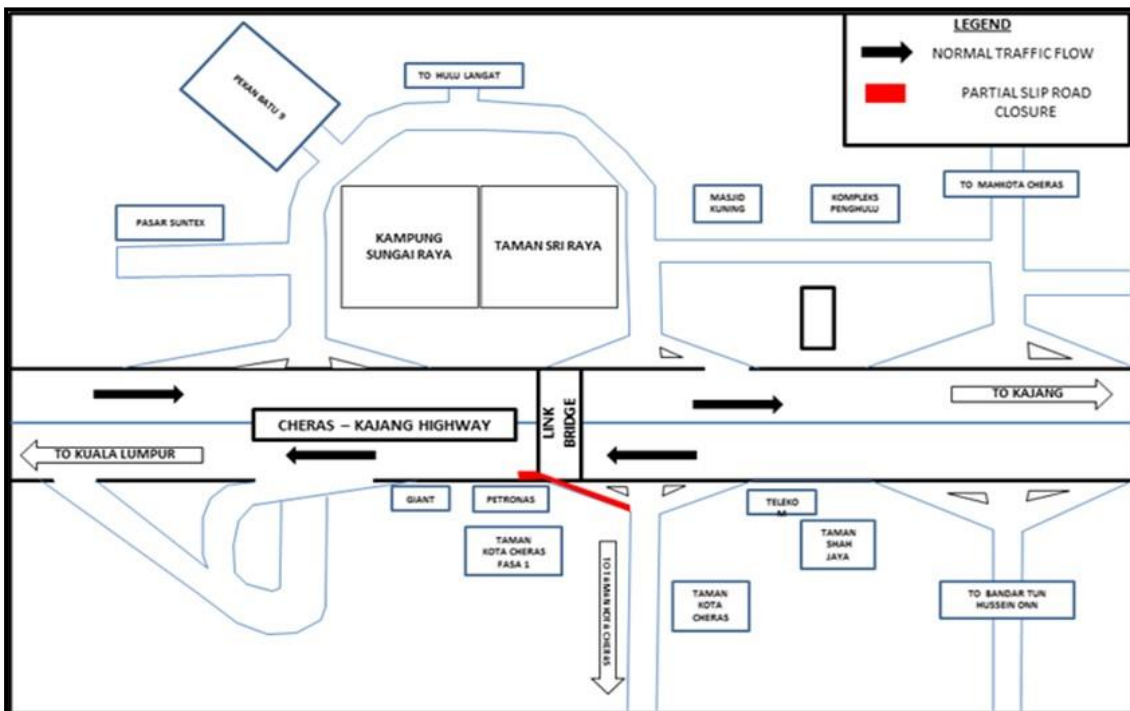
MAP 6: SLIP ROAD CLOSURE AT EXIT 702 AND EXIT 703, CHERAS-KAJANG HIGHWAY (KAJANG AND KUALA LUMPUR BOUND)

7. CONTINUATION OF PARTIAL LANE AND SLIP ROAD CLOSURE AT EXIT 703 – TELEKOM INTERCHANGE ON CHERAS-KAJANG HIGHWAY (KUALA LUMPUR BOUND) (INTERMITTENT CLOSURE)

Date	10 June 2017 –30 June 2017
Time	10:00AM - 4:00PM and 10:00PM - 5:00AM
Duration	20 Days
Reason	To facilitate maintenance works for Taman Sri Raya Link Bridge, reinstatement of street lighting, road resurfacing (milling & pavement) and road marking works

There will be a partial lane closure on the slip road from Taman Kota Cheras entering the Cheras – Kajang Highway (Kuala Lumpur-bound, nearby Station Petronas Batu 9) from **10 June 2017 until 30 June 2017** between **10:00AM - 4:00PM** and between **10:00PM – 5:00AM**.

No road diversion will be made during this closure.



MAP 7: PARTIAL LANE AND SLIP ROAD CLOSURE AT EXIT 703 – TELEKOM INTERCHANGE ON CHERAS KAJANG HIGHWAY (KUALA LUMPUR BOUND)

8. FULL SLIP ROAD CLOSURE AT EXIT 704 – BANDAR TUN HUSSEIN ONN INTERCHANGE ON CHERAS-KAJANG HIGHWAY (KUALA LUMPUR BOUND) (INTERMITTENT CLOSURE)

Date	20 June 2017 – 30 June 2017
Time	10:00PM - 5:00AM
Duration	10 Nights
Reasons	To facilitate reinstatement of street lighting, permanent signage, hardscape works and road marking works

There will be full slip road closure at Exit 704 at Bandar Tun Hussein Onn Interchange (Kuala Lumpur Bound) starting from **20 June 2017 until 30 June 2017 from 10:00 PM – 5:00AM**. The closure will be implemented in **TWO stages** as numbered in the map.

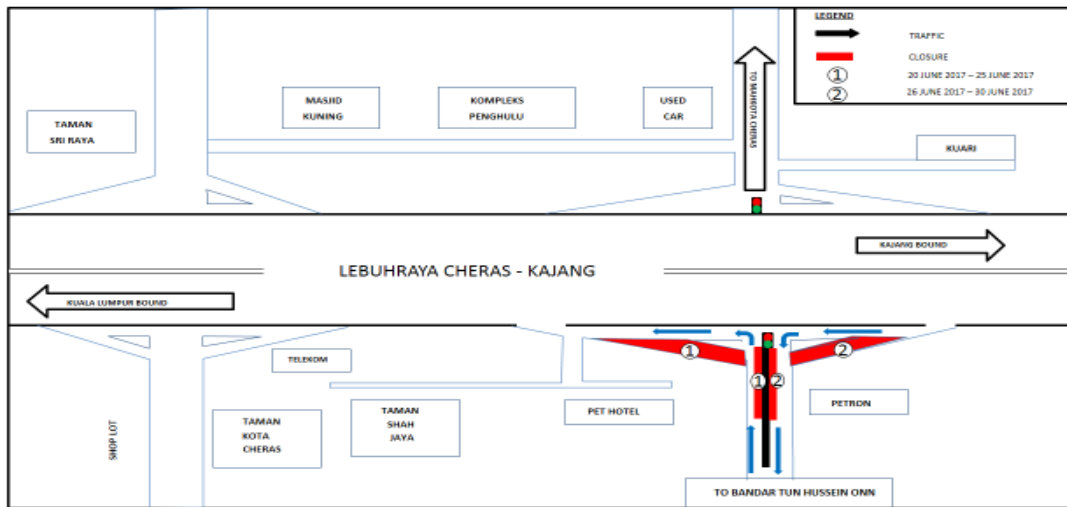
Stage 1, numbered as 1 (20 June 2017 – 25 June 2017)

Full slip road closure from Bandar Tun Hussein Onn entering Cheras Kajang Highway (Kuala Lumpur -Bound).

Stage 2, numbered as 2 (26 June 2017 – 30 June 2017)

Full slip road closure from Kajang (Toll Bt 11, Cheras-Kajang Highway, Kuala Lumpur-bound) entering Bandar Tun Hussein Onn.

During this closure stages, one lane will be made available for motorists going to Tun Bandar Hussein Onn and those heading towards Kuala Lumpur (as indicated by **BLUE** arrow on the appended map). No road diversion will be implemented.



MAP 8: FULL SLIP ROAD CLOSURE AT EXIT 704 BANDAR TUN HUSSEIN ONN INTERCHANGE

For media enquiries, please contact:

Hillalluddin Mohd Ali
Leanne Ann Susau

Tel: +6019 201 0002
Tel: +603 7493 3963

hillalluddin@azrb.com
Leanne@mgjv-kvmrt.com.my

MMC GAMUDA KVMRT (PDP) SDN BHD (927050-H)
Block A, Level 7, Menara Mustapha Kamal, PJ Trade Centre, No 8, Jalan PJU 8/8A,
Bandar Damansara Perdana, 47820 Petaling Jaya, Selangor, Malaysia
T: 603 7494 2200 F: 603 7722 2643 www.kvmrt.com.my