

TRAFFIC ANNOUNCEMENT

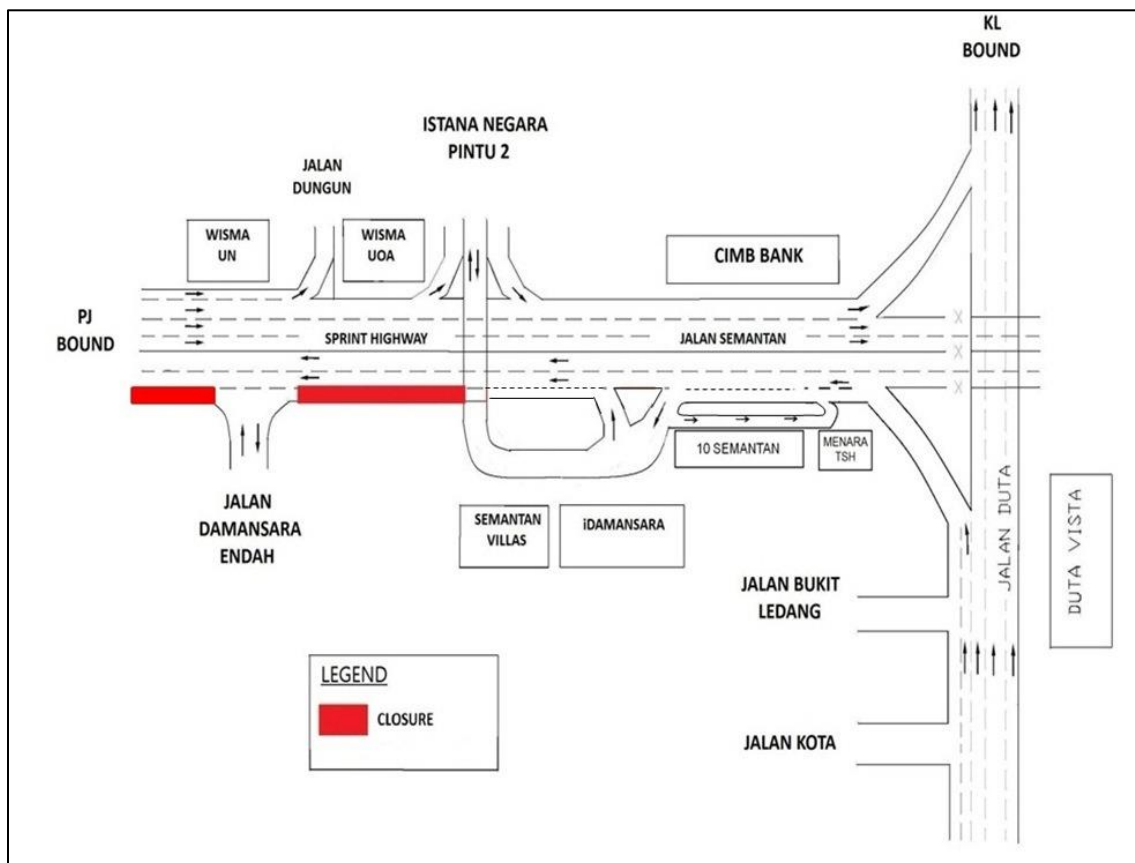
UPDATES ON TRAFFIC MANAGEMENT PLAN FOR MRT CONSTRUCTION AT SPRINT HIGHWAY

1. CONTINUATION OF LEFT-MOST LANE CLOSURE AT SPRINT HIGHWAY/JALAN SEMANTAN

Date	1 January 2017 – 31 January 2017
Time	24 hours
Duration	1 Month
Reason	To facilitate finishing works including coating, drainage and road works

There will be a continuation of the left-most lane closure at SPRINT Highway/Jalan Semantan from **1 January 2017 – 31 January 2017, 24 hours daily**. This **200-metre closure stretch** starts after 10 Semantan until the junction of Jalan Damansara Endah.

During this closure, two (2) lanes will be made available for motorists from Kuala Lumpur heading towards Petaling Jaya.



MAP 1: CONTINUATION OF LEFT-MOST LANE CLOSURE AT SPRINT HIGHWAY / JALAN SEMANTAN

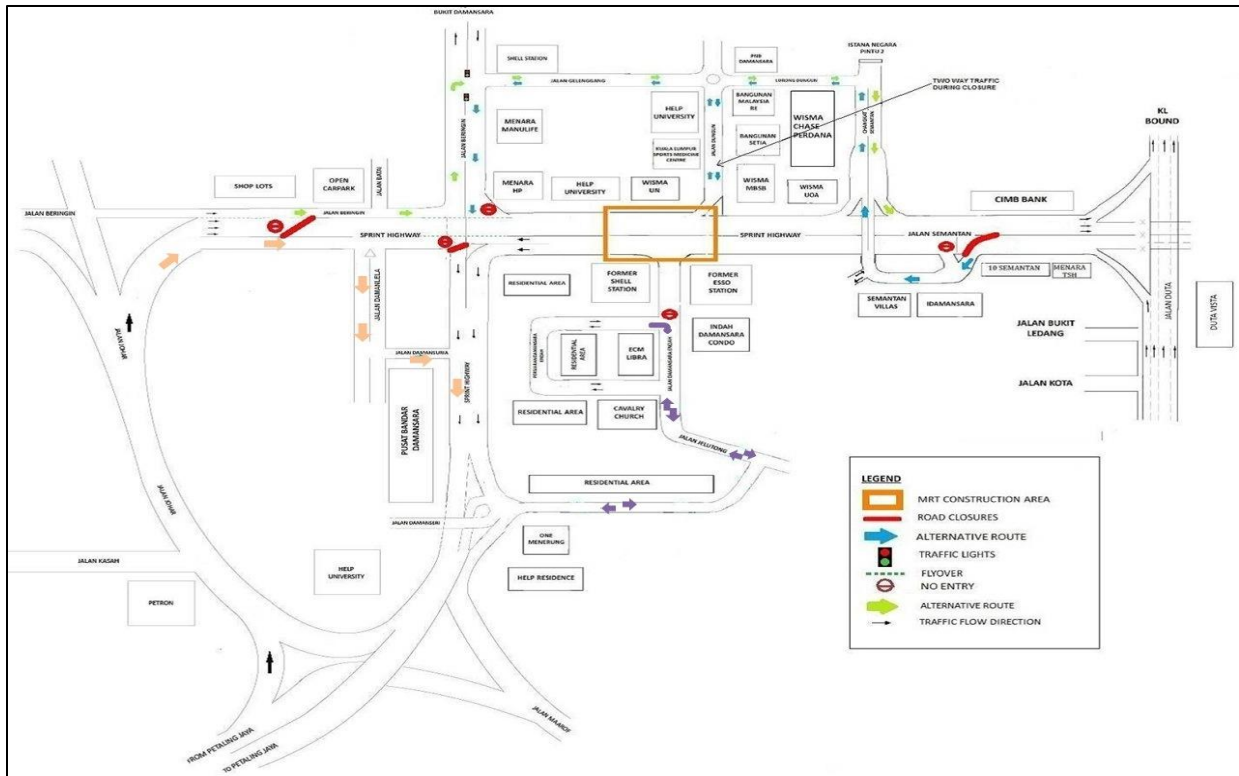
2. CONTINUATION OF FULL NIGHT CLOSURE OF SPRINT HIGHWAY/ JALAN SEMANTAN

Date	1 January 2017 – 31 January 2017
Time	10:00 pm – 5:00 am (Monday to Friday) 12 midnight (Saturday) to 12 noon (Sunday)
Duration	1 month
Reason	To facilitate station works of MRT Semantan Station

The full night closure of the SPRINT Highway/Jalan Semantan (both Kuala Lumpur and Petaling Jaya-bound) will continue until **31 January 2017**. The closure will take place from **10:00pm to 5:00am (Monday – Friday) and 12 midnights (Saturday) to 12 noon (Sunday)**. The closure will be done **intermittently** from KM7.4 until KM8.1. *(Please see appended map).*

Motorists will be required to use the following alternative routes:

1. **Motorists from Kuala Lumpur heading to Petaling Jaya** on the SPRINT Highway/Jalan Semantan will be diverted up the ramp to Istana Pintu 2 into Lorong Dungun, straight to Jalan Gelenggang, and then turn left to Jalan Beringin and underneath the flyover to join the SPRINT Highway (as indicated in **BLUE** in map).
2. **Motorists from Kuala Lumpur heading to Jalan Damansara, Jalan Jelutong and Jalan Damansara Endah** will be diverted up the Istana Pintu 2 ramp, into Lorong Dungun, straight to Jalan Gelenggang, then left to Jalan Beringin and underneath the flyover to join the SPRINT Highway, passing Pusat Bandar Damansara and up the ramp before connecting to Jalan Damansara, Jalan Jelutong and Jalan Damansara Endah (as indicated in **BLUE** followed by **PURPLE** in map).
3. **Motorists from Petaling Jaya heading back to PJ/Bangsar** will be diverted onto Jalan Damanlela, left into Jalan Damansuria before connecting back to SPRINT Highway (as indicated in **ORANGE** in map).

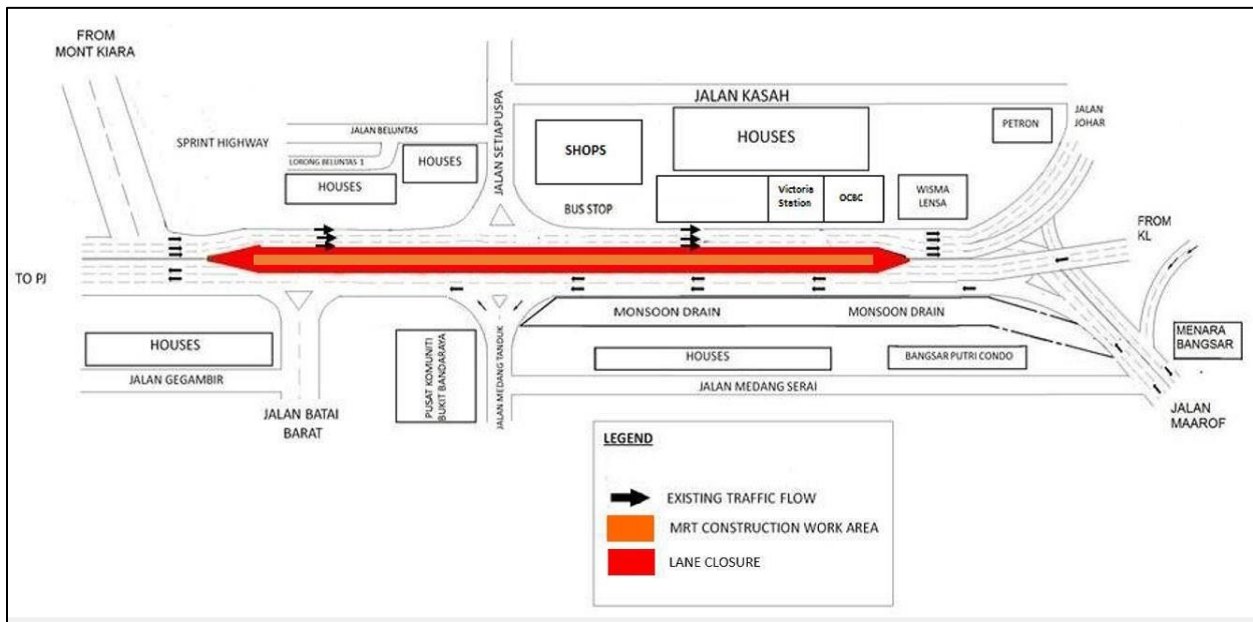


MAP 2: CONTINUATION OF FULL NIGHT CLOSURE OF SPRINT HIGHWAY/ JALAN SEMANTAN

3. CONTINUATION OF RIGHT MOST LANE CLOSURE FROM KIARA INTERCHANGE TOWARDS WISMA LENSA (KL-BOUND) AND MEDANG SERAI TOWARDS KIARA INTERCHANGE (PJ-BOUND)

Date	1 January 2017 – 31 January 2017
Time	10:00AM – 4:00PM & 10:00PM – 6:00AM
Duration	1 Month
Reason	To facilitate bearing and turfing works

There will be a continuation of the right- most lane closure from Kiara Interchange to Wisma Lensa (KL and PJ-bound) from **1 January 2017 – 31 January 2017, 10:00am – 4:00pm and 10:00pm – 6:00am, off peak daily**. During this closure, three (3) lanes will be made available for motorists on KL- bound and two (2) lanes will be available for motorists on PJ- bound.



MAP 3: CONTINUATION OF RIGHT MOST LANE CLOSURE FROM KIARA INTERCHANGE TOWARDS WISMA LENSA (KL-BOUND) AND MEDANG SERAI TOWARDS KIARA INTERCHANGE (PJ-BOUND)

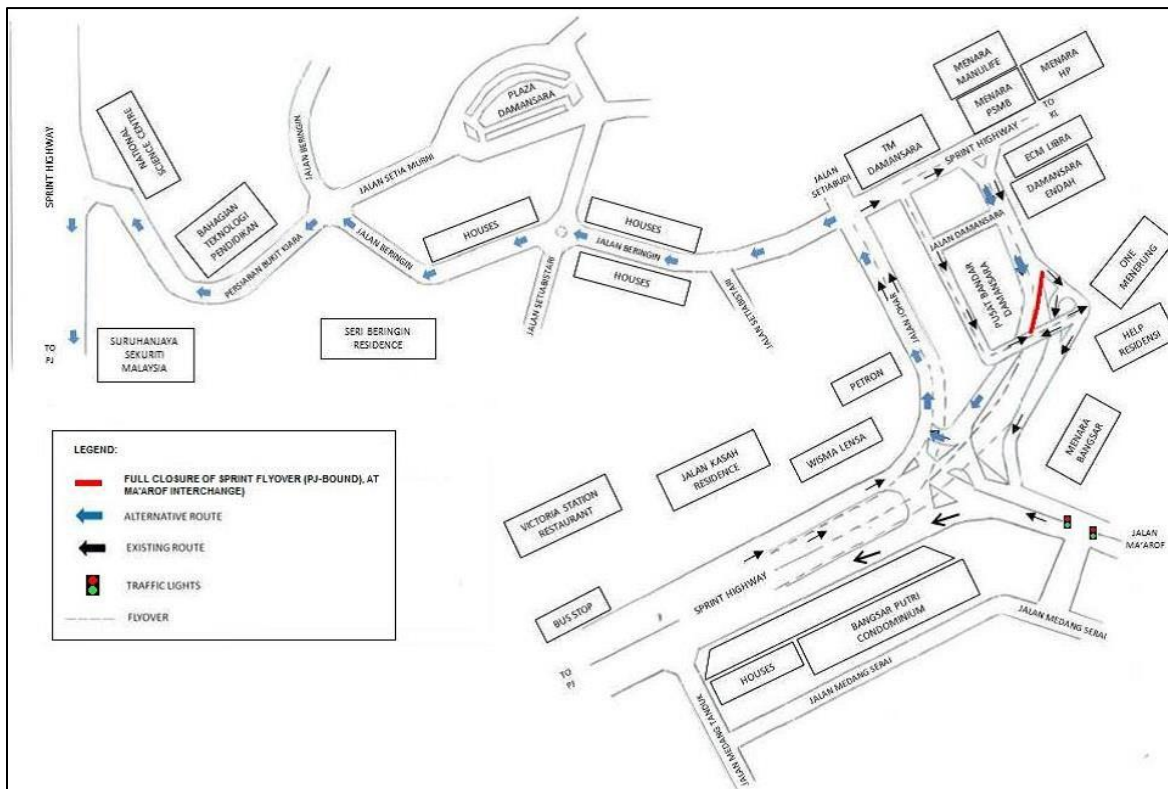
4. CONTINUATION OF FULL ROAD NIGHT CLOSURE OF SPRINT HIGHWAY NEAR PUSAT BANDAR DAMANSARA (PJ-BOUND)

Date	1 January 2017 – 31 January 2017
Time	10:00 pm – 6:00 am (Monday to Friday) 12:00 midnight (Saturday) – 12:00 noon (Sunday)
Duration	1 Month
Reason	To facilitate station works of MRT Pusat Bandar Damansara Station

SPRINT flyover near Pusat Bandar Damansara (PJ-bound) will undergo a medium- term full road closure starting **1 January 2017 – 31 January 2017 , 10:00PM to 6:00AM (Monday to Friday) and 12:00 Midnight (Saturday) until 12:00 Noon (Sunday), intermittently.**

During this closure, motorists from KL heading towards PJ will be diverted to turn into Jalan Johar and then turn left into Jalan Beringin. At the roundabout, take the second exit to continue on Jalan Beringin and turn left at the junction to go to Persiaran Bukit Kiara before joining SPRINT Highway to get to PJ.

Motorists from KL to Jalan Ma’arof/ Bangsar will not be affected.



MAP 4: CONTINUATION OF FULL ROAD NIGHT CLOSURE OF SPRINT HIGHWAY NEAR PUSAT BANDAR DAMANSARA (PJ-BOUND)

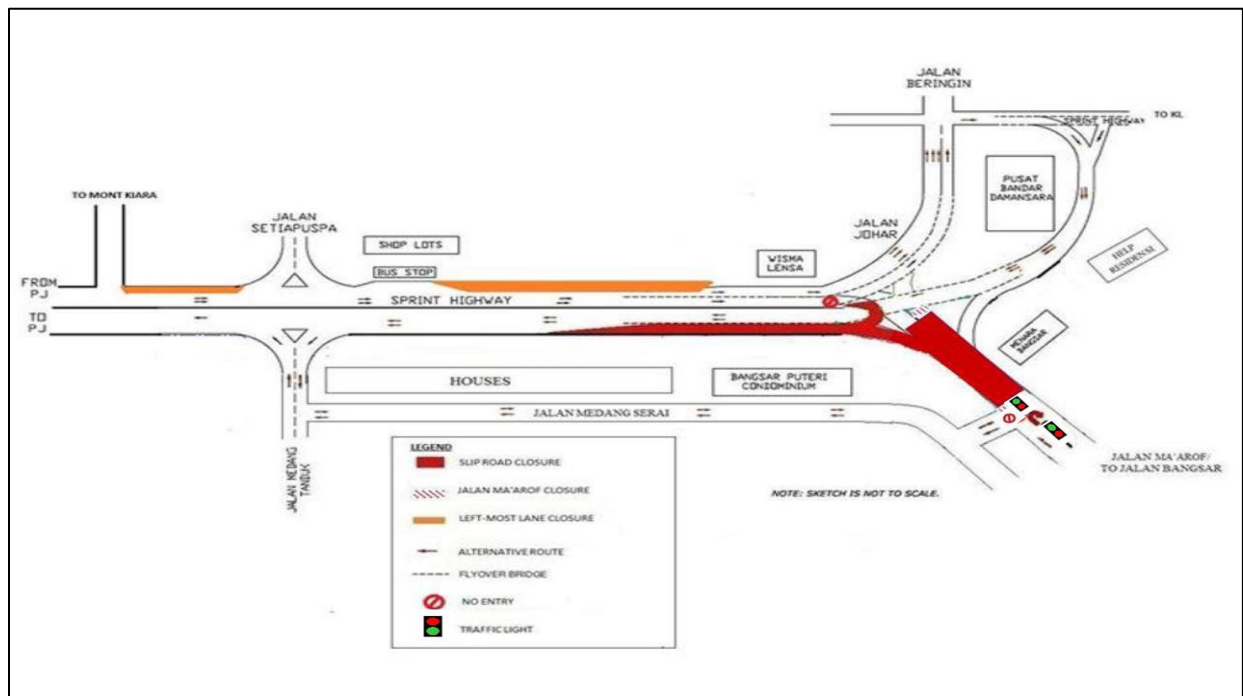
5. CONTINUATION OF NIGHT TRAFFIC MANAGEMENT AT SPRINT HIGHWAY AND JALAN MA'AROF (KL AND PJ-BOUND)

Date	1 January 2017 – 31 January 2017
Time	10:00PM to 6:00AM
Duration	1 Month
Reason	To facilitate road work, coating piers, drainage and station works

There will be a continuation of closure at Jalan Ma'arof which stretches from the junction of Jalan Medang Serai to Ma'arof Interchange (downhill heading towards Jalan Johar) for both bounds. This also affects the U-Turn to Petaling Jaya at the Ma'arof Interchange. The closure continues from **1 January 2017 – 31 January 2017, 10:00PM to 6:00AM, intermittently.**

During the closure, the following diversions will take place:

- **Motorists from PJ heading towards Jalan Ma'arof** will be diverted to Pusat Bandar Damansara onto SPRINT flyover above Ma'arof Interchange before making a left turn into Jalan Medang Tanduk, and left again into Jalan Medang Serai before joining Jalan Ma'arof.
- **Motorists from Jalan Ma'arof heading towards PJ** will be diverted to left into Jalan Medang Serai, and right to Jalan Medang Tanduk to join SPRINT Highway.
- **Motorists from Jalan Ma'arof (from KL) returning to KL** will be diverted left into Jalan Medang Serai and right to Jalan Medang Tanduk to join SPRINT Highway before making a U-Turn at the Kiara Interchange.



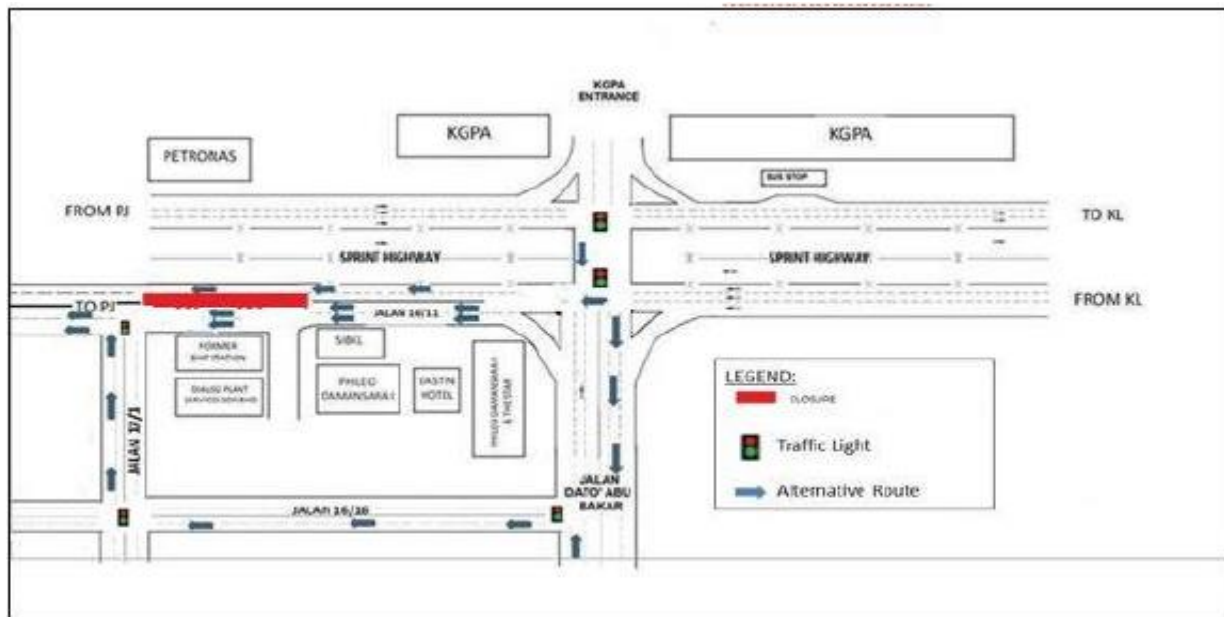
MAP 5: CONTINUATION OF NIGHT TRAFFIC MANAGEMENT AT SPRINT HIGHWAY AND JALAN MA'AROF (KL AND PJ-BOUND)

6. CONTINUATION OF LANE CLOSURE NEXT TO SPRINT HIGHWAY (DAMANSARA TOLL PLAZA)

Date	1 January 2017 – 31 January 2017
Time	10:00PM – 6:00AM
Duration	1 Month
Reason	To facilitate drainage works & road kerb

There will be a continuation of the lane closure next to the SPRINT Highway (Damansara Toll Plaza) from **3 December 2016 – 31 December 2016 from 10:00PM – 6:00AM**. During this closure one (1) lane will be made available to the motorists from KL heading towards Petaling Jaya. There will be two (2) lanes available for motorists on Jalan 16/11 going towards Petaling Jaya.

To minimize the traffic impact, motorists from KL on SPRINT Highway heading towards Petaling Jaya can opt to turn into Jalan Dato' Abu Bakar and turn right into Jalan 16/16 and then right to Jalan 17/1 and join back Jalan 16/11 to head back to Petaling Jaya.



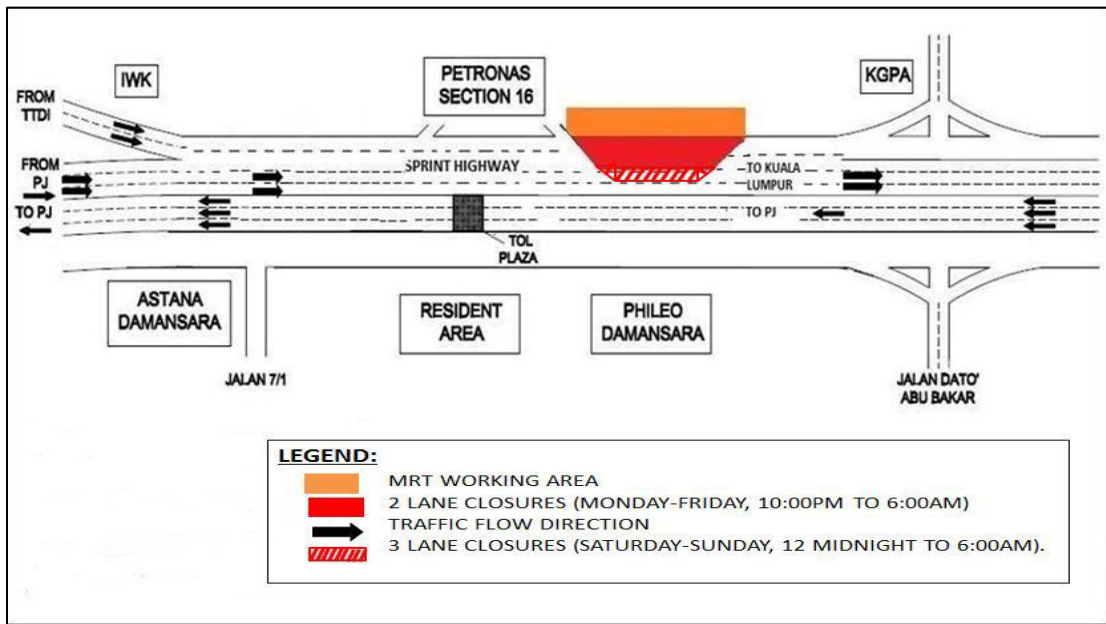
MAP 6: CONTINUATION OF LANE CLOSURE NEXT TO SPRINT HIGHWAY (DAMANSARA TOLL PLAZA)

7. CONTINUATION OF LANE CLOSURE AT SPRINT HIGHWAY AFTER PETRONAS STATION, SECTION 16 (KL-BOUND)

Date	1 January 2017 – 31 January 2017
Time	12:00 am to 6:00 am (Monday – Friday) 12:00 midnight to 6:00 am (Saturday – Sunday)
Duration	1 month
Reason	To facilitate the completion work of link bridge for Phileo Damansara Station and material delivery and unloading for station work

There will be two (2) lanes closure for a stretch of 200 m after the Section 16 Petronas Petrol Station at SPRINT Highway (KL-bound), **from 1 January 2017 – 31 January 2017**. This closure will be divided into a **two-lane closure (Monday-Friday, 12:00AM to 6:00AM)** and a **three-lane closure (Saturday – Sunday, 12 Midnight to 6:00AM)**.

Two (2) lanes (right-most-lane) will be made available for motorists from TTDI and Petaling Jaya heading to Kuala Lumpur from Monday to Friday. One (1) lane (right-most-lane) will be made available for motorists of the same bound during weekend (Saturday-Sunday).



MAP 7: CONTINUATION OF LANE CLOSURE AT SPRINT HIGHWAY AFTER PETRONAS STATION, SECTION 16 (KL-BOUND)

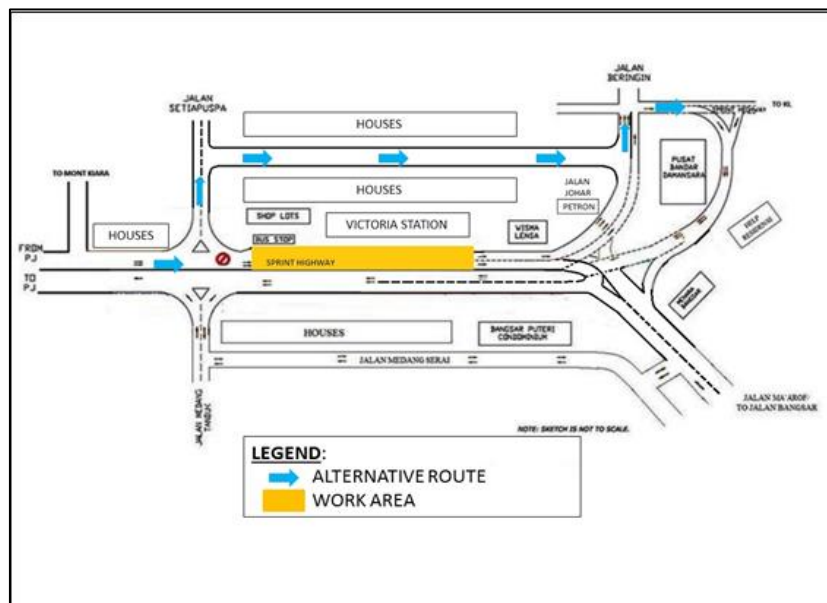
8. TOTAL CLOSURE AT SPRINT HIGHWAY NEAR VICTORIA STATION (KL-BOUND)

Date	1 January 2017 – 15 January 2017
Time	10:00 pm to 6:00am
Duration	15 Days
Reason	To facilitate installation of Gantry, road line marking

There will be a full closure of SPRINT Highway near Victoria Station for installation of gantry from **1 January 2017 – 15 January 2017, 10:00pm – 6:00am.**

During the closure, the following diversions will take place:

- **Motorists from PJ heading towards KL** will be diverted towards Jalan Kasah and then heading straight to Jalan Semantan to KL.
- **Motorists from PJ heading towards Bangsar/Jalan Ma'arof** will be diverted towards Jalan Kasah and Pusat Bandar Damansara before connecting slip road Jalan Johar, then take left underneath the SPRINT flyover to Jalan Ma'arof before proceeding to Bangsar.



MAP 8: TOTAL CLOSURE AT SPRINT HIGHWAY NEAR VICTORIA STATION (KL-BOUND)

For media enquiries, please contact:

Subba Rao

Tel: +6019 7736806

srao@sunway.com.my

Siti Fadzillah Ismail

Tel: +603 7493 3963

sitifadzillah@mgjv-kvmrt.com.my

MMC GAMUDA KVMRT (PDP) SDN BHD (927050-H)

Block A, Level 7, Menara Mustapha Kamal, PJ Trade Centre, No 8, Jalan PJU 8/8A,
Bandar Damansara Perdana, 47820 Petaling Jaya, Selangor, Malaysia
T: 603 7494 2200 F: 603 7722 2643 www.kvmrt.com.my