

MEDIA RELEASE
TRAFFIC UPDATES FOR MRT CONSTRUCTION AT PERSIARAN SURIAN,
EAST-WEST LINK EXPRESSWAY, JALAN CHERAS AND SILK HIGHWAY

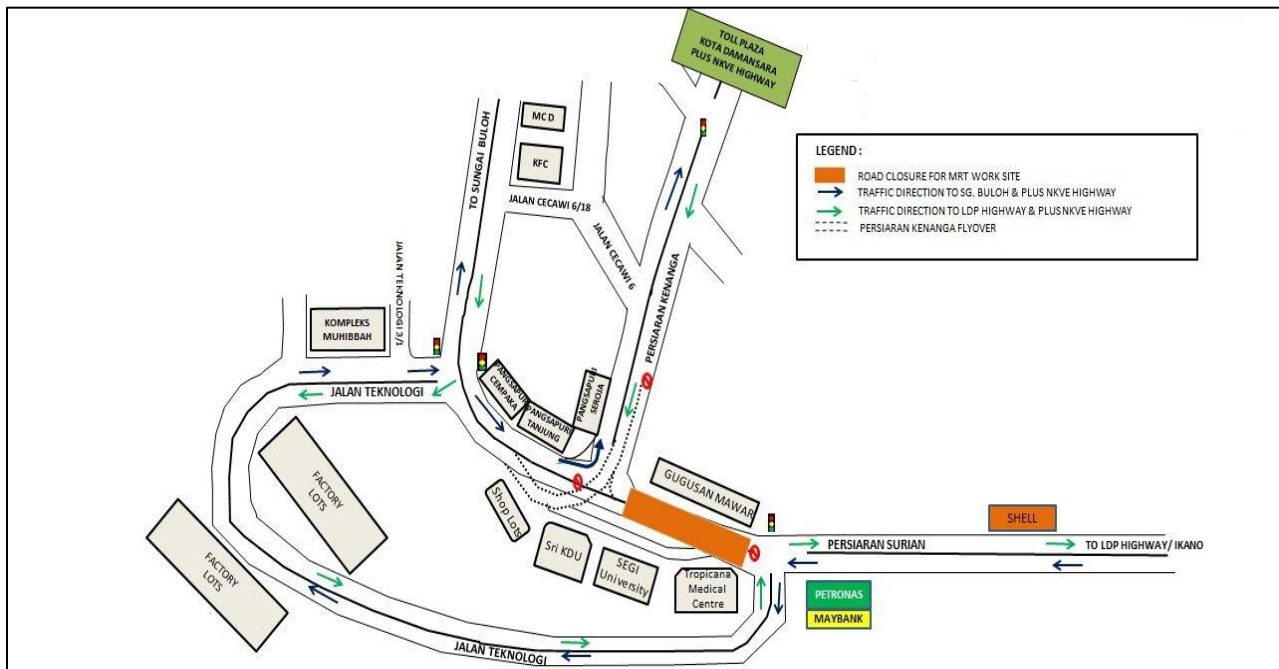
1. TEMPORARY NIGHT TRAFFIC DIVERSION AT PERSIARAN SURIAN NEAR TROPICANA MEDICAL CENTRE (SUNGAI BULOH AND LDP HIGHWAY-BOUND)

Date	14 July 2014 – 31 July 2014
Time	10:00pm – 5:00am
Duration	19 days
Reason	Construction of MRT elevated guide way and MRT PJU 5 Station

Temporary night traffic diversion will be implemented at Persiaran Surian to accommodate the closure of short stretch near Tropicana Medical Centre. During this period, motorists are advised to use the following alternative routes (*please refer to the appended map*):

- Motorists on Persiaran Surian (from LDP Highway) heading to Sungai Buloh / PLUS NKVE Highway will have to turn left at the junction before Tropicana Medical Centre and make their way into Jalan Teknologi
- Motorists from Sungai Buloh and PLUS NKVE Highway (Kota Damansara Toll Plaza) heading to Sunway Giza will be diverted through Jalan Teknologi (at Kompleks Muhibbah) to join Persiaran Surian.

Motorists from PLUS NKVE Highway (Kota Damansara Toll Plaza) heading to Sungai Buloh remain unaffected.



2. TRAFFIC MANAGEMENT PLAN AT THE INTERSECTION BETWEEN EAST-WEST LINK EXPRESSWAY AND JALAN CHERAS (KAJANG-BOUND)

Date	14 July 2014 To 31 October 2014
Time	10:00pm – 5:00am
Duration	110 days
Reason	To facilitate the construction of portal frame for the MRT guideway.

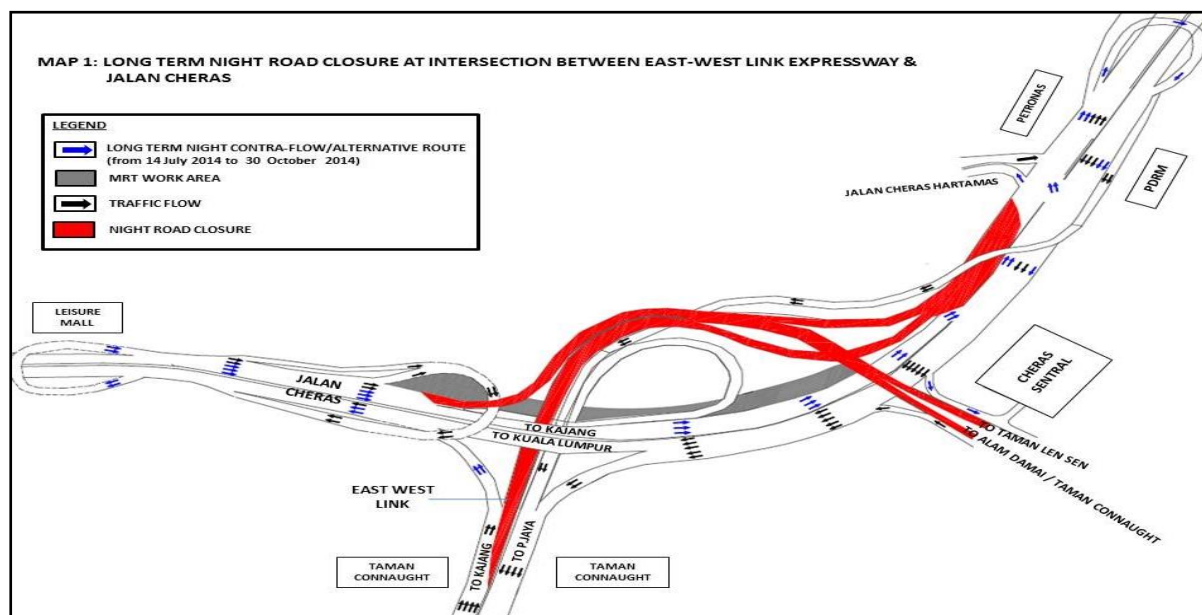
Temporary night lane closures will be implemented at the following areas:

- i) Full lane closure at the stretch between the slip road of East-West Link Expressway and before the junction of Jalan Cheras Hartamas (Kajang-bound).
- ii) Slip road from Taman Connaught heading towards Jalan Cheras (Kajang-bound), Taman Len Sen and Alam Damai.
- iii) The intersection between East West Link Expressway and Jalan Cheras (affecting Kajang-bound motorists).

During this closure, motorists are advised to use the following alternative routes:

- **Motorist from Kuala Lumpur heading to Kajang** will be diverted to the opposite lane (near Cheras Sentral).
- **Motorists from Taman Connaught (on East West Link) heading to Kajang** will be diverted to make a U-turn at Jalan Cheras (near Leisure Mall)
- **Motorists from Taman Connaught (on East-West Link) towards Alam Damai and Taman Len Sen** will be diverted to make a U-turn at Jalan Cheras (near Leisure Mall), another U-turn near Petronas Batu 7 before taking a left turn at the junction after Cheras Sentral.
- **Motorists from Kuala Lumpur (on Jalan Cheras) towards Jalan Cheras Hartamas** will be diverted to Jalan Cheras main road, following the contra-flow direction (at the opposite lane).

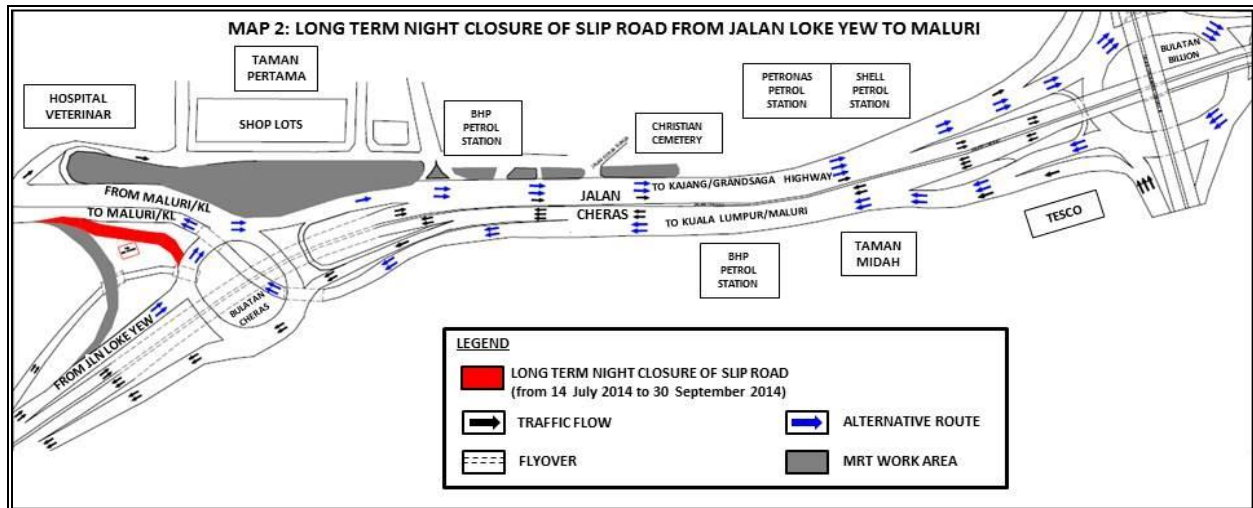
Motorists from Kajang heading towards Petaling Jaya via East-West Link Expressway underpass and motorists from Kajang (on Cheras Kajang Highway) towards Kuala Lumpur are not affected.



3. CONTINUATION OF LONG-TERM CLOSURE OF SLIP ROAD FROM JALAN LOKE YEW HEADING TOWARDS JALAN CHERAS (KL-BOUND)

Date	14 July 2014 to 30 September 2014
Time	10:00pm – 5:00am
Duration	78 days
Reason	To facilitate launching of special span for MRT guideway

During this closure, motorists from Jalan Loke Yew heading to Jalan Cheras (KL-bound) are advised to use Bulatan Cheras heading towards Kajang and take the fourth exit to Tesco Cheras at the Taman Billion Roundabout to get onto Jalan Cheras (KL-bound)/Maluri. *(Please see appended map).*



4. FOUR-NIGHT SLIP ROAD CLOSURE AT SILK HIGHWAY (BOTH KAJANG, AND PUTRAJAYA / CYBERJAYA / SHAH ALAM-BOUND)

Date	14 July 2014 to 17 July 2014
Time	11.00 pm – 5.00 am
Duration	4 days
Reason	To facilitate SBG repair work

During this closure, motorists are advised to use the following alternative routes:

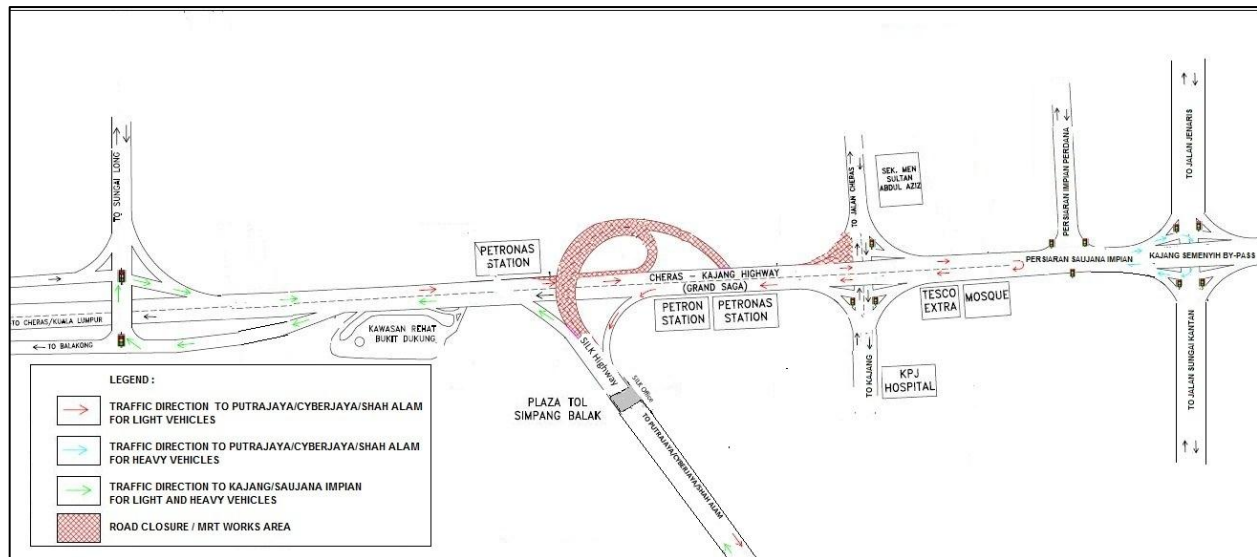
1. From Cheras (on Grand Saga Highway) to Putrajaya/Cyberjaya/Shah Alam

Light vehicles are advised to make a U-turn at Persiaran Saujana Impian after Tesco Kajang (indicated in **Red** in map).

Heavy vehicles will be directed to make a U-turn at Kajang-Semenyih bypass before heading to Putrajaya/Cyberjaya/Shah Alam on the SILK Highway (indicated in **Blue** in the appended map).

2. From Putrajaya/Cyberjaya/Shah Alam (on SILK Highway) heading to Kajang/Semenyih

Light and heavy vehicles are advised to make a U-turn at the Sungai Long Interchange (indicated in **Green** in map).



5. ONE NIGHT ROAD CLOSURE AT PERSIARAN SURIAN (KOTA DAMANSARA-BOUND)

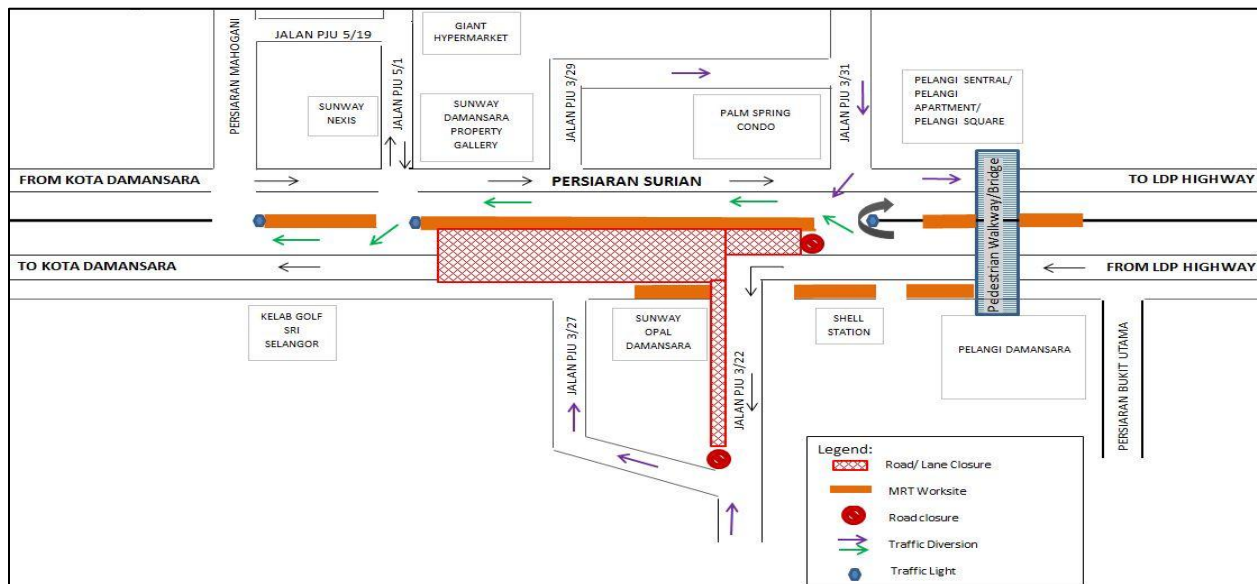
Date	17 July 2014
Time	10pm to 6am
Duration	1 night
Reason	To facilitate MRT construction works along Persiaran Surian

A one-night road closure will be implemented at Persiaran Surian at the stretch between the traffic light junction of Jalan PJU 3/31 to the traffic light junction of Jalan PJU 5/1 (Kota Damansara-bound). During this night closure, the following traffic management plan will take place (*please see appended map*):

- **Contra-flow traffic** will be implemented at Persiaran Surian (Kota Damansara-bound). Motorists on Persiaran Surian (Kota Damansara-bound) will be diverted to the opposite side of the road from the traffic light junction of PJU 3/31. One traffic lane will be made available each for each direction (Kota Damansara-bound and LDP Highway-bound). (Please refer to the **Green** arrow in the appended map).
- **Alternative route from Jalan PJU 3/22.** Motorists from Jalan PJU 3/22 wishing to turn into Persiaran Surian (Kota Damansara-bound) will be diverted to Jalan PJU 3/27. (Please refer to the **Purple** arrow in the appended map).

Motorists on Persiaran Surian (Kota Damansara bound) wishing to access Sunway Damansara Housing area will not be affected and can turn left into Jalan PJU 3/22.

Motorists are advised to follow the directions from the flagmen who will be managing the traffic during this period.



For media enquiries, please contact:

Juliana Johari Tan (Enquiry for item 1) Tel: +6019 355 8322
Irynn Eng (Enquiry for item 2 & 3) Tel: +603 9174 0978
Mohd Lotfi Ab Latif (Enquiry for item 4) Tel: +603 8733 1626
Adeline de Cruz (Enquiry for item 5) Tel: +6012 217 2017
Ong Jee Lian Tel: +603 7493 3963

juliana@gadang.com.my
engpl@ijm.com
lotfi.latif@mtdv7.com
adeline@mudajaya.com
jeelian@mgjv-kvmrt.com.my

MMC GAMUDA KVMRT (PDP) SDN BHD (927050-H)

Block A, Level 7, Menara Mustapha Kamal, PJ Trade Centre, No 8, Jalan PJU 8/8A,
Bandar Damansara Perdana, 47820 Petaling Jaya, Selangor, Malaysia
T: 603 7494 2200 F: 603 7722 2643 www.kvmrt.com.my