

MEDIA RELEASE

TRAFFIC MANAGEMENT ANNOUNCEMENT

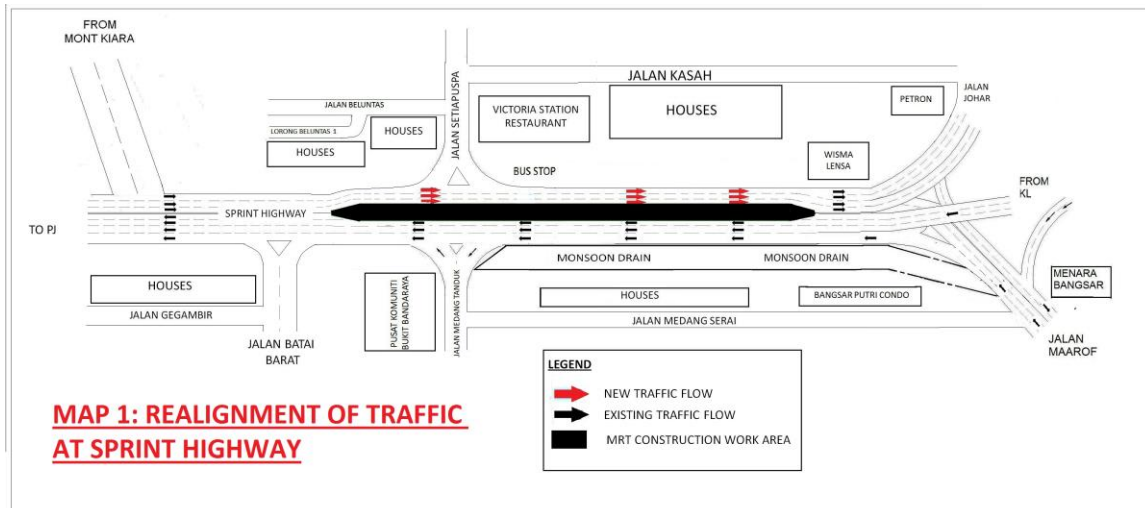
Kuala Lumpur, 5 December 2013: Mass Rapid Transit Corporation (MRT Corp) wishes to announce the following:

i. Realignment of traffic at Sprint Highway between Jalan Setiapuspa and Wisma Lensa (Kuala Lumpur-bound)

The right-most and middle lanes at Sprint Highway (KL-bound), between Jalan Setiapuspa Junction to Wisma Lensa will be realigned to the newly constructed lanes on the left, starting 7 December 2013. *(Please see appended Map 1.)*

In the realignment, there will be no reduction to the number of traffic lanes.

This 850-metre traffic realignment is necessary to facilitate pier construction works located at the median of Sprint Highway.

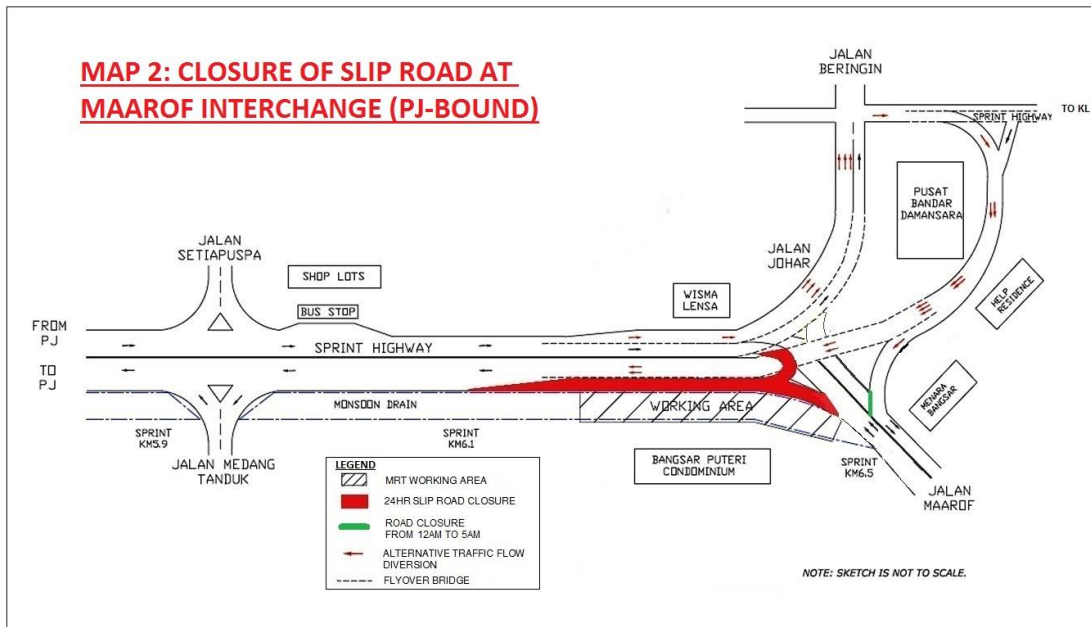




ii. Closure of slip road at Maarof Interchange (PJ-bound)

The slip road at Maarof Interchange (PJ-bound) will be closed for eighteen (18) days, from 9 December 2013 to 26 December 2013 (including public holidays).

During this temporary closure, traffic from Jalan Maarof (from Bangsar) heading towards Sprint Highway (PJ-bound) will be diverted to Jalan Johar, going around Pusat Bandar Damansara and back to Sprint Highway. (Please refer to appended Map 2.)

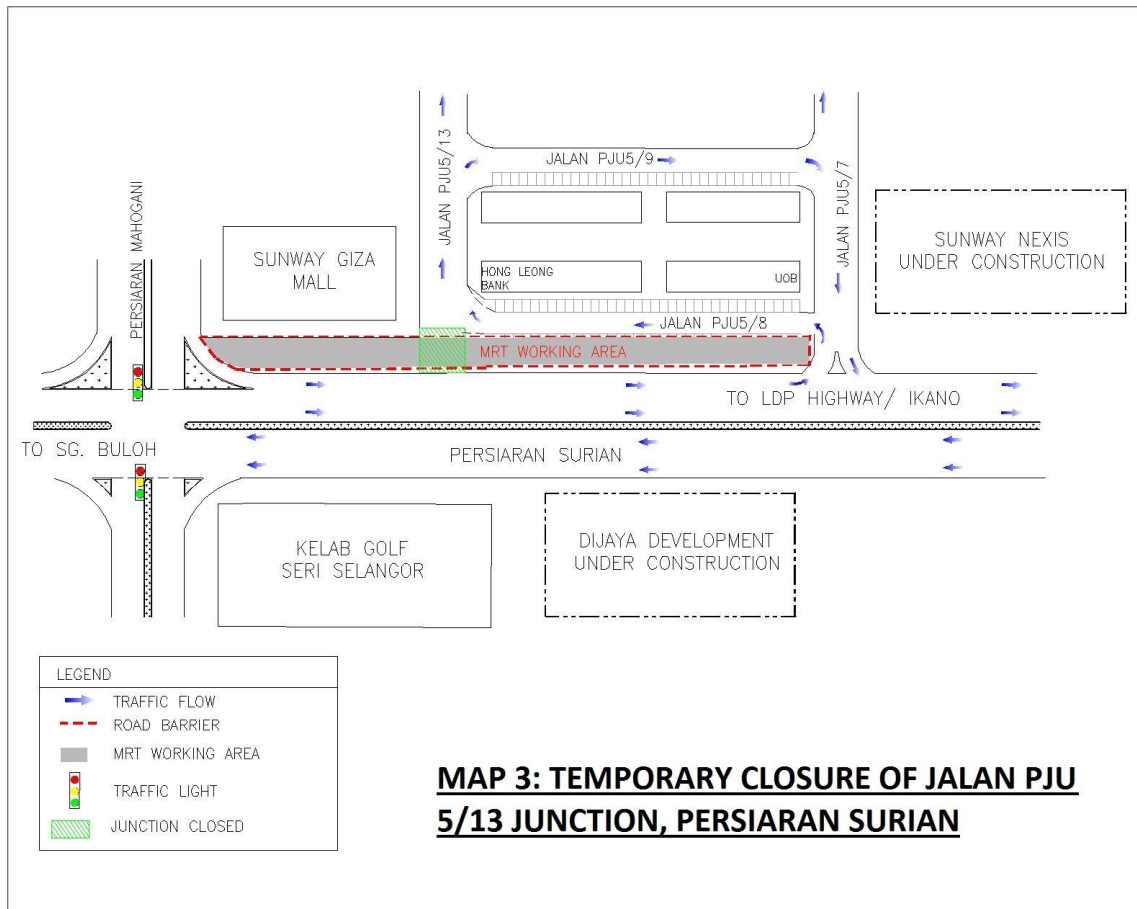


iii. Temporary closure of Jalan PJU 5/13 junction, Persiaran Surian

There will be a temporary closure of Jalan PJU 5/13 junction with Persiaran Surian, starting from 10 December 2013 to 31 December 2013 (including public holidays).

During this temporary closure, motorists from Persiaran Surian (towards IKANO) who wishes to turn into Jalan PJU 5/13 will be directed to enter from Jalan PJU 5/8. (Please refer to appended Map 3.)

The closure is necessary to facilitate box culvert crossing works in preparation for the construction of MRT piers and the future MRT Dataran Sunway Station.



ENDS



About the MRT Project

MRT is a new rail transport system for the Klang Valley. It is part of the government's Greater Kuala Lumpur/Klang Valley's National Key Economic Area (NKEA), under the Economic Transformation Programme. The Sungai Buloh – Kajang (SBK) Line runs for 51kms, from the north-west town of Sg Buloh to the south-east city town of Kajang. Upon completion, it will comprise 31 stations, and serve 1.2 million people along the route. It will also have strategic integration with KL's existing rail transport network, namely the LRT, Monorail and KTM Komuter, as well as intra and inter-city bus routes. The end result will be better connectivity for KL and its surrounding cities, while reducing the number of cars that enter the capital.

MRT Corp wishes to apologise for any temporary inconvenience caused to the public during the construction of this world-class public transport facility that will benefit Malaysians at large. For more information on traffic diversion, the public can visit the MRT website at www.mymrt.com.my or www.mymrt-underground.com.my, twitter @MRTMalaysia or twitter @MyMRT Underground or call the MRT Hotline at 1-800-82-6868.

Motorists are reminded to drive carefully near MRT worksites and to follow directional signs. Safety barriers, hoardings and traffic cones will be installed at the work sites to ensure road users and pedestrians are well-informed of on-going works. In addition, a 24-hour MRT Ronda will be patrolling along the routes to attend to any emergencies.

For media enquiries, please contact:

Mr. Leong Shen-Li
MRT Corp

03-20813182 / leong.shen-li@mymrt.com.my

Ms. Nadia Azmi
MRT Corp

03-20813185 / nadia.azmi@mymrt.com.my