

MEDIA RELEASE

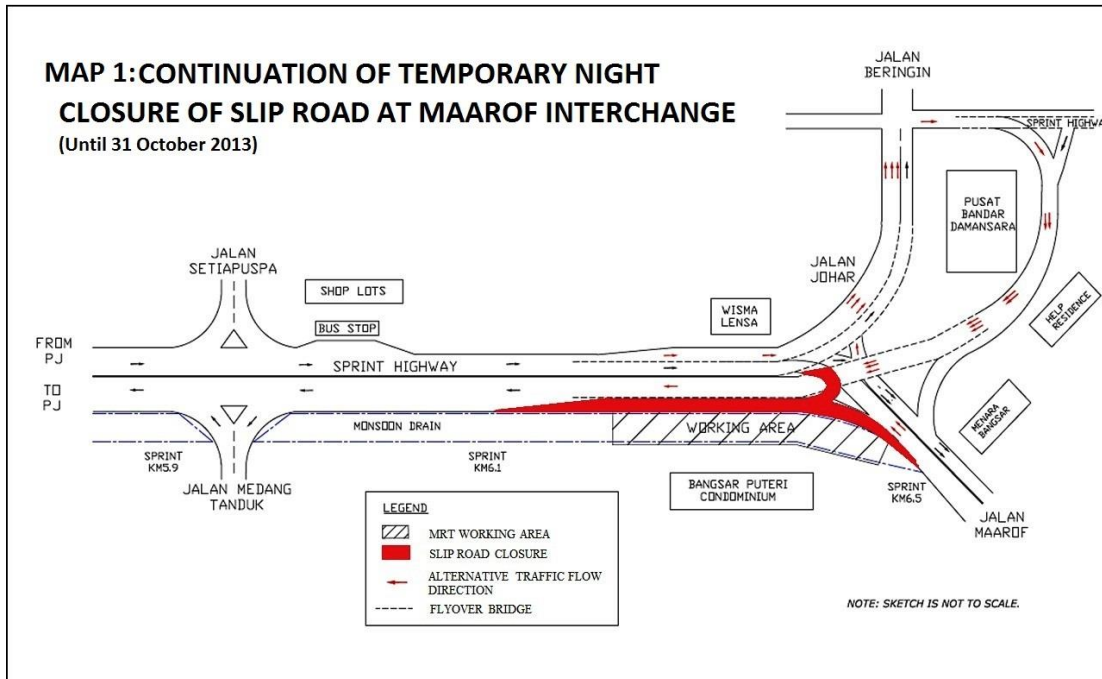
TRAFFIC MANAGEMENT ANNOUNCEMENT

Kuala Lumpur, 3 October 2013: Mass Rapid Transit Corporation Sdn Bhd (MRT Corp) wishes to announce the following night closures:

i. Continuation of temporary night closure of slip road at Maarof Interchange

The closure of the slip road at Maarof Interchange will be extended to **31 October 2013**. The road will be **intermittently closed from 9:00pm to 6:00am daily**.

The extension of the closure is necessary to facilitate the construction of piers and the future MRT Pusat Bandar Damansara Station. During this temporary closure, the traffic from Jalan Maarof (from Bangsar) heading towards Sprint Highway (Petaling Jaya-bound) will be diverted to Jalan Johar, going around Pusat Bandar Damansara Complex and back to Sprint Highway (Please refer to appended Map 1.)





Encik Amir Mahmood Razak, Director of Strategic Communications and Public Relations, MRT Corp thanked residents and road users that have been cooperative over the extended night closures.

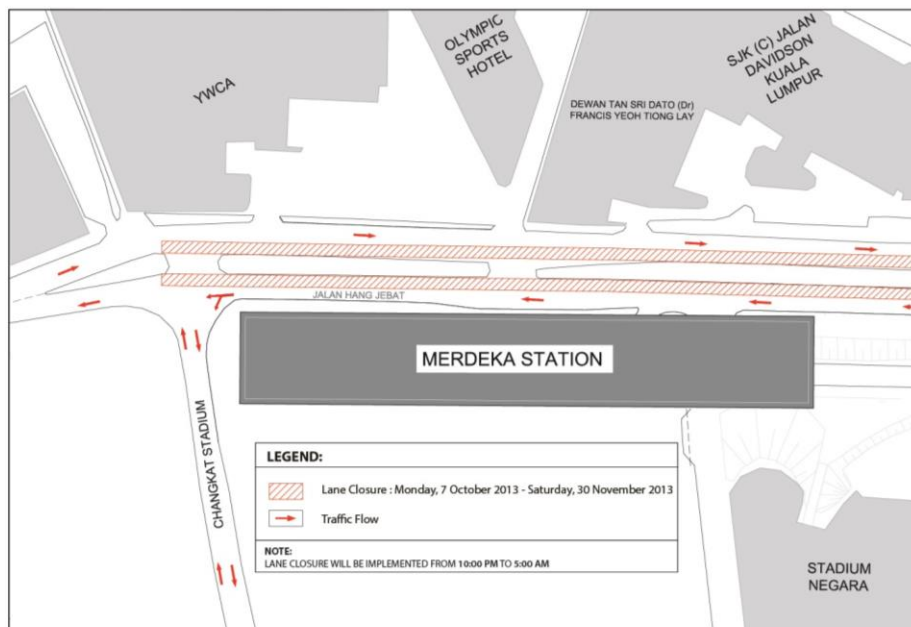
"These are all done in the interest of public safety. Again, MRT Corp has tried to minimise the impact to road users by instituting the closures at night when traffic is not as heavy as in the day," explained Encik Amir.

ii. Partial night lane closures at Jalan Hang Jebat (in front of YWCA)

There will be night lane closures on the right-most lane on both directions of Jalan Hang Jebat from **7 October 2013 to 30 November 2013, from 10:00pm to 5:00am daily.** (Please see appended Map 2.)

The lane closures on the 150-metre stretch are to facilitate utility works. Traffic movement is not expected to be affected during the period as the closures will be done late at night into the early hours of the next day.

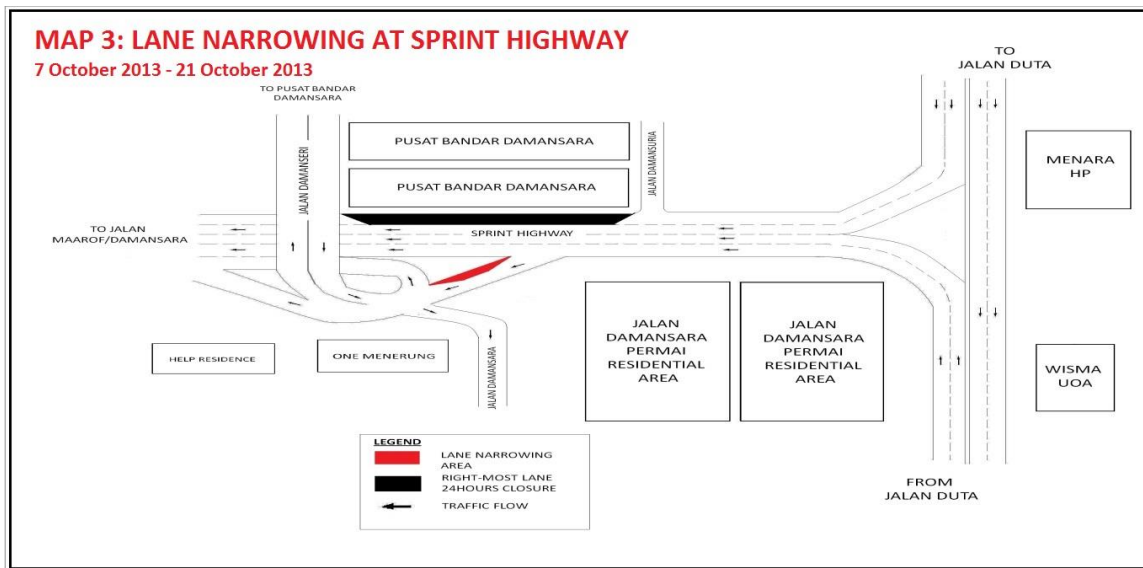
MAP 2: PARTIAL NIGHT LANE CLOSURE IN JALAN HANG JEBAT



iii. Lane narrowing at Sprint Highway (exit to Jalan Maarof, opposite Pusat Bandar Damansara)

The lane at Sprint Highway (exit to Jalan Maarof, opposite Pusat Bandar Damansara) will be narrowed for **two (2) weeks** from **7 October 2013 to 21 October 2013** for **24 hours, daily**. (Please refer to appended Map 3.)

The 80-metre lane narrowing is necessary to facilitate piling works in preparation for the construction of MRT piers. The lane remains sufficient for the usage of motorists heading to Jalan Maarof and Pusat Bandar Damansara.



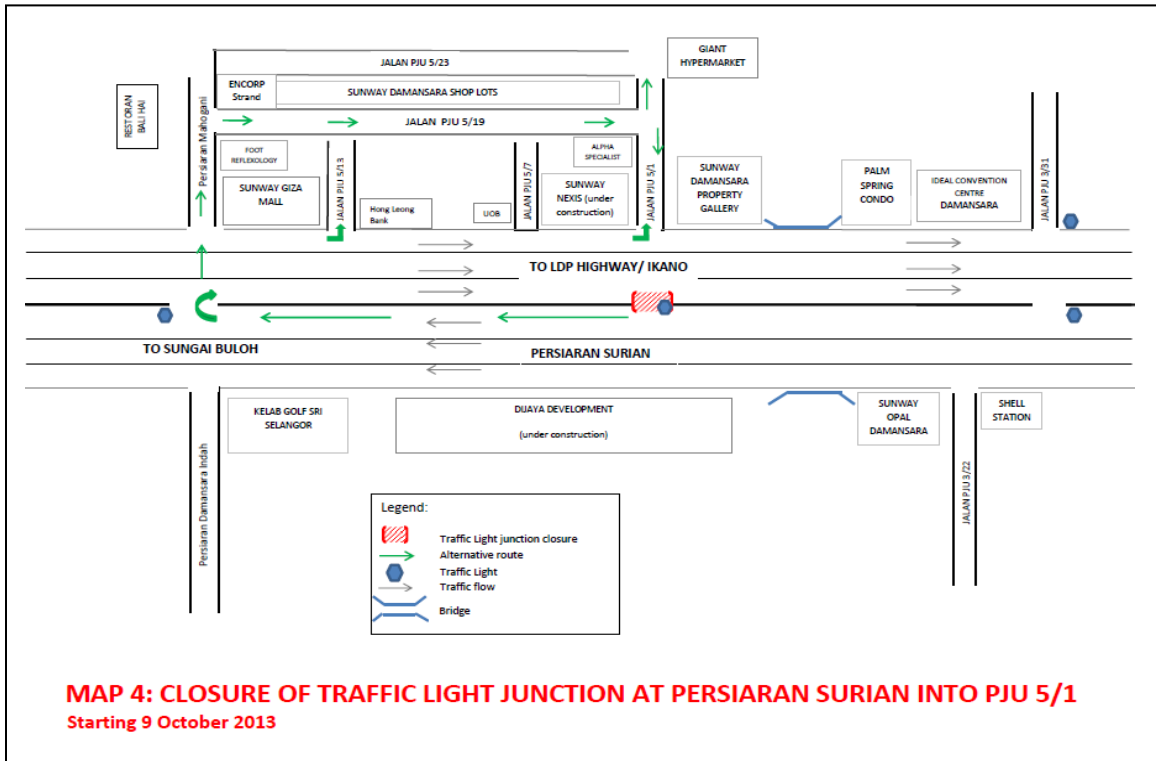
iv. Closure of traffic light junction at Persiaran Surian into PJU 5/1

The traffic light junction at Persiaran Surian into Jalan PJU 5/1 (Sungai Buloh-bound) will be closed starting **Wednesday, 9 October 2013**.

As motorists travelling towards Sungai Buloh will not be able to make a right-turn at Jalan PJU 5/1 junction (towards Giant Hypermarket), **motorists can access Sunway Damansara area by driving 50 metres ahead to the next traffic light junction of Persiaran Mahogani, towards Jalan PJU 5/19 junction.** (Please see appended Map 4.)

The closure of Jalan PJU 5/1 junction is needed to allow the construction of MRT piers at this stretch. Motorists are assured that the number of traffic lanes remains unchanged along Persiaran Surian.

“To alleviate the expected higher traffic at the Sunway Giza junction, we have re-timed the traffic lights there. This should allow more cars to make the u-turn or turn right,” says Encik Amir Mahmood Razak, Director of Strategic Communications and Public Relations, MRT Corp.



ENDS



About the MRT Project

MRT is a new rail transport system for the Klang Valley. It is part of the government's Greater Kuala Lumpur/Klang Valley's National Key Economic Area (NKEA), under the Economic Transformation Programme. The Sungai Buloh – Kajang (SBK) Line runs for 51kms, from the north-west town of Sg Buloh to the south-east city town of Kajang. Upon completion, it will comprise 31 stations, and serve 1.2 million people along the route. It will also have strategic integration with KL's existing rail transport network, namely the LRT, Monorail and KTM Komuter, as well as intra and inter-city bus routes. The end result will be better connectivity for KL and its surrounding cities, while reducing the number of cars that enter the capital.

MRT Corp wishes to apologise for any temporary inconvenience caused to the public during the construction of this world-class public transport facility that will benefit Malaysians at large. For more information on traffic diversion, the public can visit the MRT website at www.mymrt.com.my or www.mymrt-underground.com.my, twitter @MRTMalaysia or twitter @MyMRT Underground or call the MRT Hotline at 1-800-82-6868.

For media enquiries, please contact:

Mr. Leong Shen-Li
MRT Corp

03-20813182 / leong.shen-li@mymrt.com.my

Ms. Nadia Azmi
MRT Corp

03-20813185 / nadia.azmi@mymrt.com.my