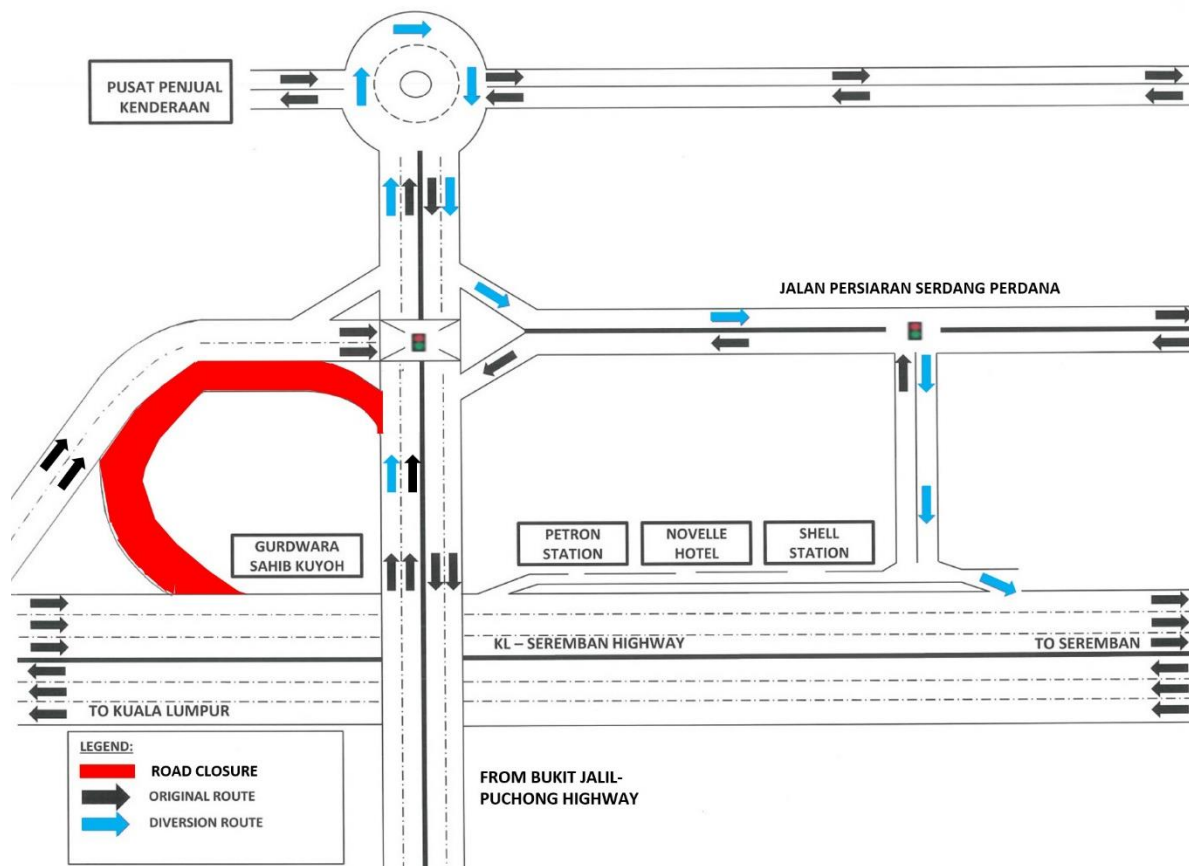


TRAFFIC ANNOUNCEMENT
CONTINUATION OF SLIP ROAD CLOSURE TO KL-SEREMBAN HIGHWAY
(SEREMBAN-BOUND)
KL - SEREMBAN HIGHWAY
19/11/2017

Date	21 November 2017 - 31 December 2017
Time	10.00PM - 6.00AM
Duration	41 days
Reason	To facilitate traffic diversion, premix work, road line marking, installation of street lighting and guardrail, utilities relocation and pile cap for MRT construction works

There will be a continuation of long-term slip road closure near Gurdwara Sahid Kuyoh at KM7.6 along KLSeremban highway (Seremban-bound) from **21 November 2017 - 31 December 2017, 10:00pm-6:00am daily**.

During the closure, motorists from **Bukit Jalil-Puchong highway heading towards KL-Seremban highway (Seremban-bound)** will be diverted to go straight, make a U-Turn at the roundabout and turn left into Jalan Persiaran Serdang Perdana. After that, turn right at the traffic light before joining into KL Seremban Highway (Seremban-bound) (as indicated in **BLUE** arrows in map).



For media enquiries, please contact:

Mohd Sofie Hasan

Tel: +6019 228 3004

sofie@sunway.com.my

Leanne Susau

Tel: +603 7493 3832

leanne@mgjv-kvmrt.com.my

MMC GAMUDA KVMRT (PDP SSP) SDN BHD (1117100-V)

Block A, Level 17, Menara Mustapha Kamal, PJ Trade Centre

No 8, Jalan PJU 8/8A, Bandar Damansara Perdana, 47820 Petaling Jaya

Selangor Darul Ehsan, Malaysia

T: +603-7494 2222 F: +603-7727 0222 <http://www.mymrt.com.my>