

**TRAFFIC ANNOUNCEMENT**  
**UPDATES ON TRAFFIC MANAGEMENT PLAN FOR MRT CONSTRUCTION**  
**AT CHERAS-KAJANG HIGHWAY**  
**(KAJANG-BOUND AND KUALA LUMPUR-BOUND)**  
**14 JULY 2017**

**1. CONTINUATION OF LANE CLOSURE AT KM 14.0 UNTIL KM 15.5 ON CHERAS-KAJANG HIGHWAY (KAJANG AND KUALA LUMPUR-BOUND) (INTERMITTENT CLOSURE)**

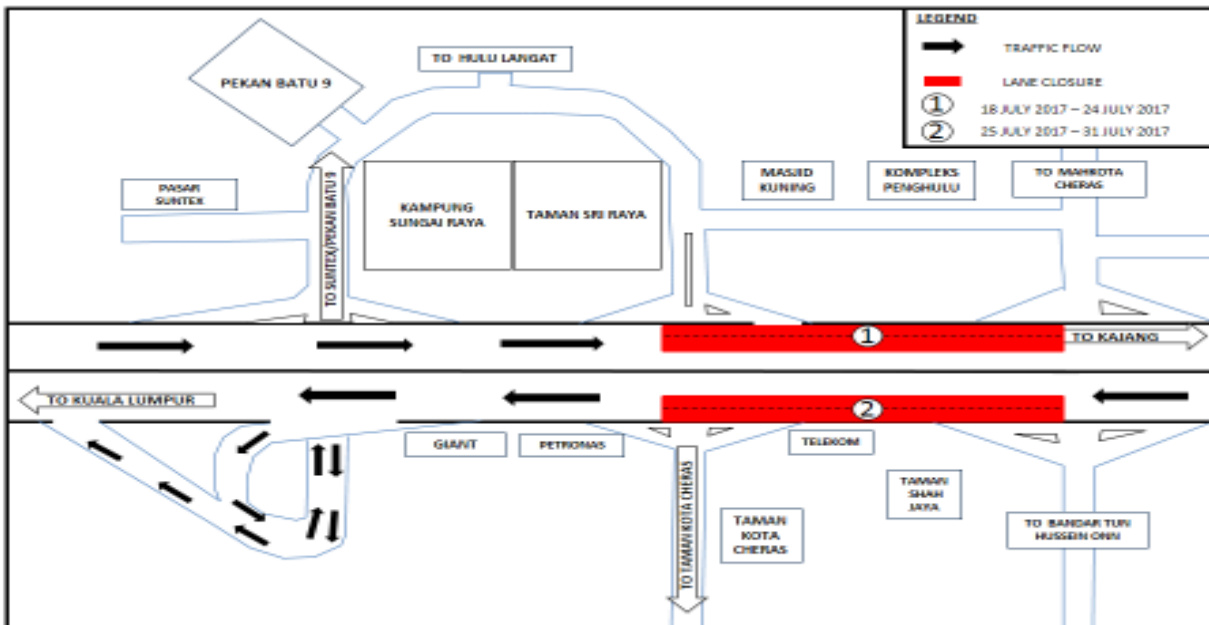
<b>Date</b>	18 July 2017 – 31 July 2017
<b>Time</b>	10:00PM - 5:00AM
<b>Duration</b>	14 Nights
<b>Reasons</b>	To facilitate the reinstatement of street lighting and permanent signage and road marking works.

There will be a continuation of two - lane closure at KM 14.0 until KM 15.5 for the stretch of 1.5 km on the Cheras-Kajang Highway from **18 July 2017 – 31 July 2017**.

**Closure 1 – Kajang-Bound (18 July 2017 – 24 July 2017)**

**Closure 2 – Kuala Lumpur-Bound (25 July 2017 – 31 July 2017)**

Only two lanes will be closed at one time and during this closure, **FOUR lanes** will be reduced to **TWO lanes** for the stretch of **1.5 km** for both bounds (intermittent).



**MAP 1: LANE CLOSURE AT KM 14.0 UNTIL KM 15.5 AT CHERAS-KAJANG HIGHWAY (KAJANG AND KUALA LUMPUR-BOUND)**

**2. CONTINUATION OF LANE CLOSURE AT KM 13.3 UNTIL KM 14.7 CHERAS-KAJANG HIGHWAY (KAJANG-BOUND) (INTERMITTENT CLOSURE)**

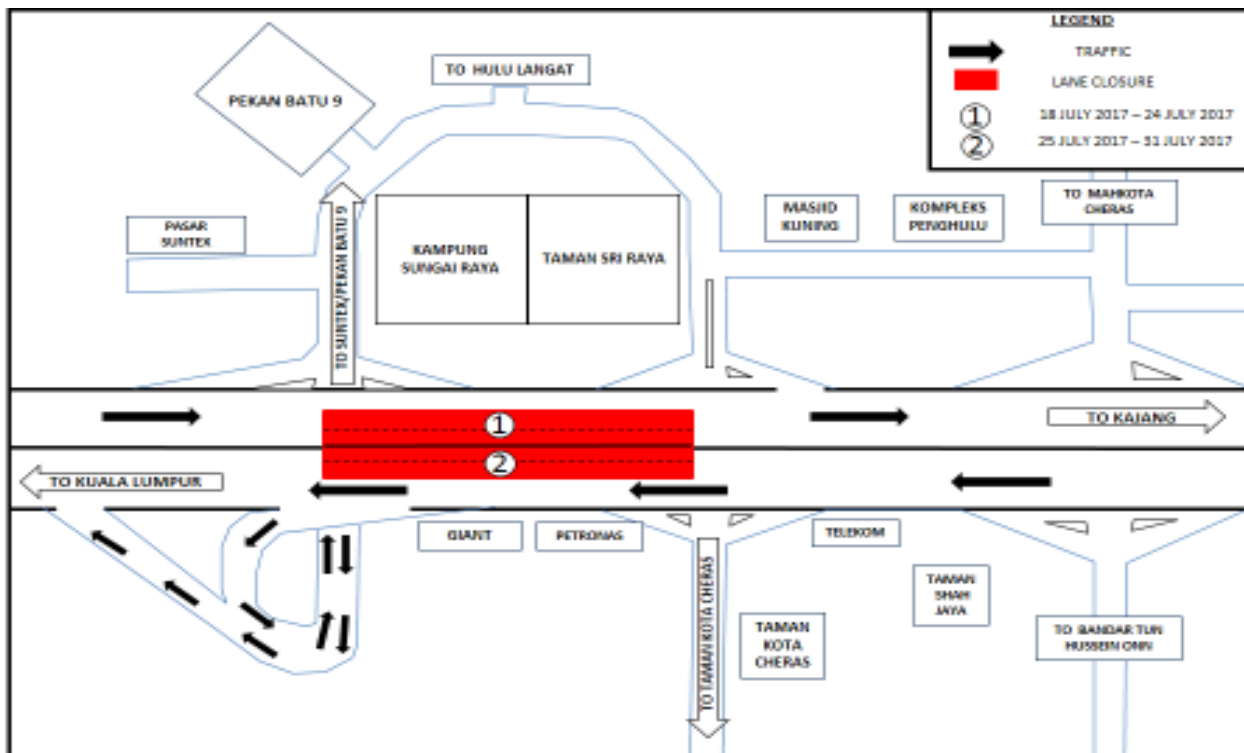
<b>Date</b>	18 July 2017 – 31 July 2017
<b>Time</b>	10:00PM - 5:00AM
<b>Duration</b>	14 Nights
<b>Reasons</b>	To facilitate the construction of link bridge, reinstatement of street lighting and permanent signage and road marking works.

There will be a continuation of two-lane closure at Cheras – Kajang Highway (Kajang and Kuala Lumpur-bound) from **18 July 2017 until 31 July 2017** between **10:00PM - 5:00 AM** stretching from KM 13.3 until KM 14.7 for **1.4KM** (nearby Kampong Sungai Raya and Taman Sri Raya).

**Closure 1 - Kajang Bound (18 July 2017 – 24 July 2017)**

**Closure 2 – Kuala Lumpur Bound (25 July 2017 – 31 July 2017)**

Only two lanes will be closed at one time and during this closure, **FOUR lanes** will be reduced to **TWO lanes** for the stretch of **1.4KM** for both bounds (intermittent).



**MAP 2: LANE CLOSURE AT KM 13.3 UNTIL KM 14.7 CHERAS-KAJANG HIGHWAY (KAJANG AND KUALA LUMPUR-BOUND)**

**3. CONTINUATION OF PARTIAL LANE CLOSURE AT EXIT 701 – PGA INTERCHANGE ON CHERAS-KAJANG HIGHWAY (KAJANG BOUND) (INTERMITTENT CLOSURE)**

<b>Date</b>	18 July 2017 – 31 July 2017
<b>Time</b>	10:00AM - 4:00PM and 10:00PM - 5:00AM
<b>Duration</b>	14 Nights
<b>Reasons</b>	To facilitate reinstatement of street lighting, permanent signage and road marking works

There will be a partial lane closure at Exit 701 at the PGA Interchange (Kajang-bound and Kuala Lumpur Bound) from **18 July 2017 until 31 July 2017** from **10:00AM – 4:00PM** and from **10:00 PM – 5:00AM**. The closure will be implemented in **TWO stages** as numbered in the map.

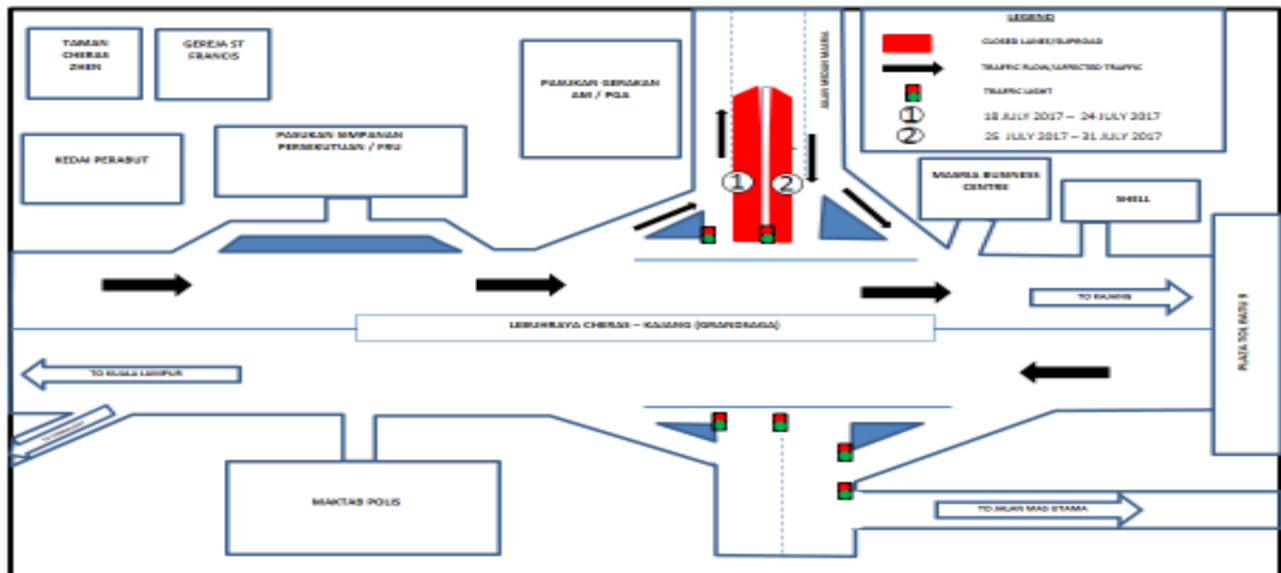
**Stage 1, numbered as 1 (18 July 2017 – 24 July 2017)**

- One lane closure on the left-most lane on the slip road entering PGA (Kajang-Bound) and Median 1 lane closure heading towards (PGA-Bound).

**Stage 2, numbered as 2 (25 July 2017 – 31 July 2017)**

- Slip road closure (Kajang-Bound) from PGA and Median 1 lane closure heading towards Kuala Lumpur.

During this closure stages, motorists are advised to use the remaining opened lane on each bound. No other road diversion will be implemented during this closure.



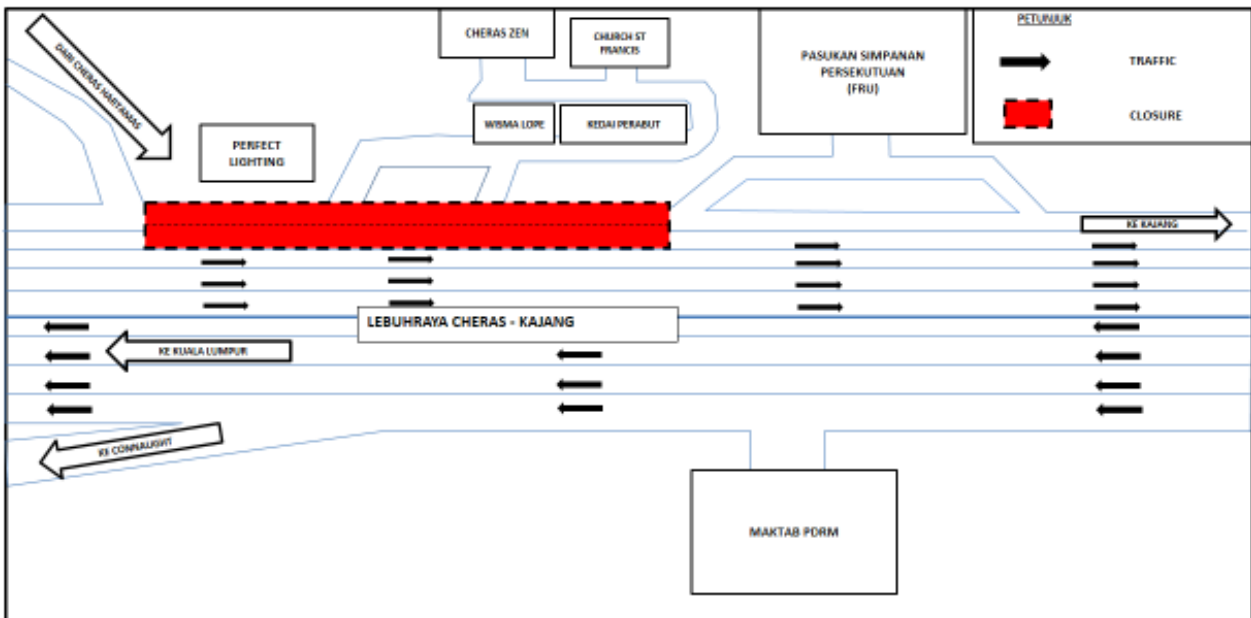
**MAP 3: PARTIAL LANE CLOSURE AT EXIT 701 – PGA INTERCHANGE ON CHERAS-KAJANG HIGHWAY (KAJANG BOUND)**

**4. CONTINUATION OF LANE CLOSURE AT KM 10.6 UNTIL KM 11.6 ON CHERAS -KAJANG HIGHWAY (KAJANG-BOUND) (INTERMITTENT CLOSURE)**

<b>Date</b>	18 July 2017 – 31 July 2017
<b>Time</b>	10:00PM - 5:00AM
<b>Duration</b>	14 Nights
<b>Reasons</b>	To facilitate the reinstatement of street lighting, permanent signage and road marking works

There will be continuation of a two -lane closure at the Cheras-Kajang Highway (Kajang Bound) from KM 10.6 until KM 11.6 for the stretch of **1KM**. The closure will be from Cheras Hartamas entering Cheras Kajang Highway (Kajang-bound) until slip road entering FRU Complex at Batu 7, Cheras) from 18 July 2017 until 31 Jul 2017, from between 10:00PM - 5:00AM

During this closure, **THREE lanes** will remain open for motorist heading to Kajang from Kuala Lumpur.



**MAP 4: LANE CLOSURE AT KM 10.6 UNTIL KM 11.6 ON CHERAS KAJANG HIGHWAY (KAJANG BOUND)**

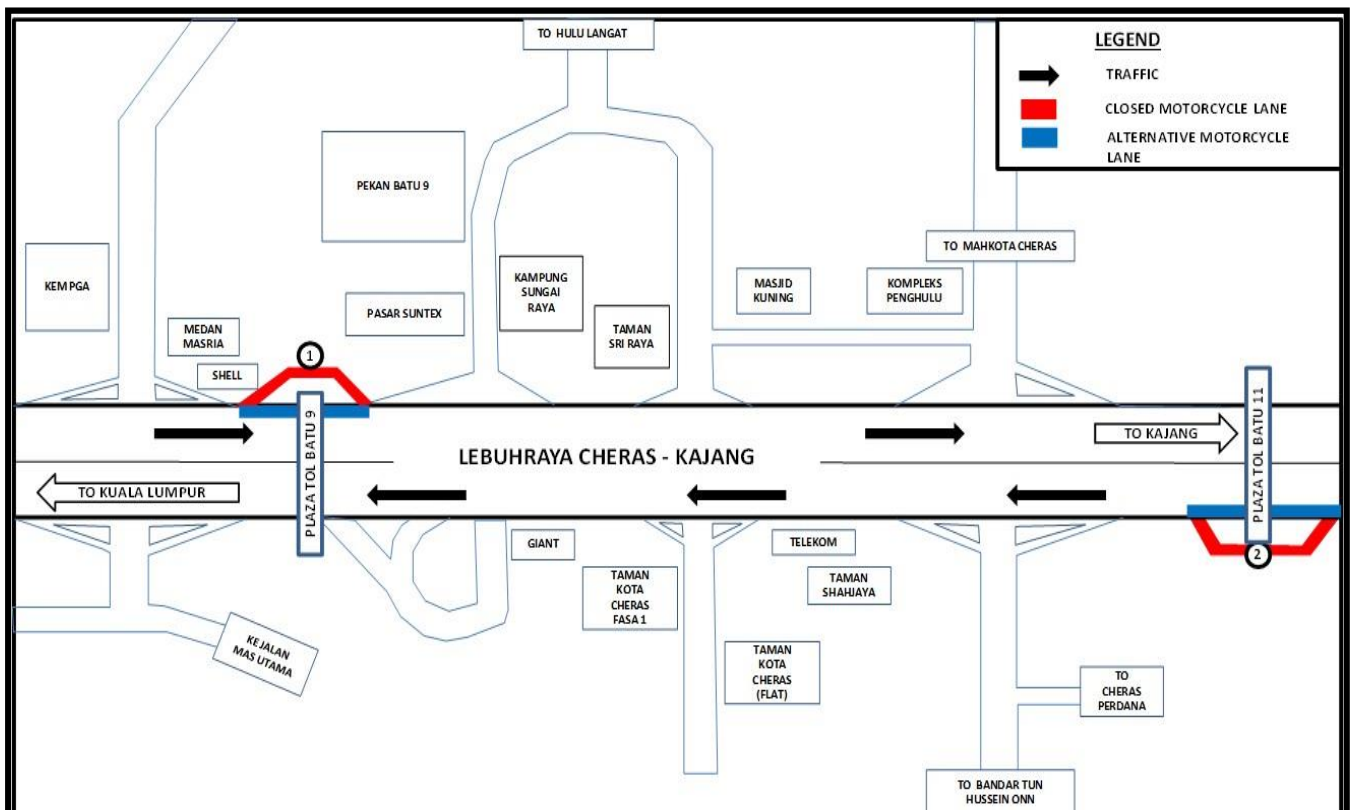
**5. CONTINUATION OF MOTORCYCLE LANE CLOSURE AT BATU AND BATU 11 TOLL BOOTH ON CHERAS-KAJANG HIGHWAY (KAJANG AND KUALA LUMPUR-BOUND) (INTERMITTENT CLOSURE)**

<b>Date</b>	18 July 2017 – 31 July 2017
<b>Time</b>	9:00AM – 4:00PM and 10.00PM – 5.00AM
<b>Duration</b>	14 Days
<b>Reasons</b>	To facilitate the maintenance works at the BTMO MRT Station, reinstatement of street lighting and permanent signage and road marking works

There will be a continuation of closure motorcycle lane closure at Batu 9 and Batu 11 Tollbooth on the Cheras-Kajang Highway (Kuala Lumpur & Kajang-bound) from **18 July 2017 – 31 July 2017** from **9:00AM – 4:00PM** and from **10.00PM – 5.00PM**. The closures will be as follow:

**Closure 1:** Closure of motorcycle lane at the Batu 9 Tollbooth of Cheras – Kajang Highway (Kajang-bound). During this closure, all motorcyclists are advised to use the left-most lane near the toll booth as indicated **BLUE** in the appended map.

**Closure 2:** Closure of motorcycle lane at the Batu 11 Tollbooth of Cheras – Kajang Highway (Kuala Lumpur-bound) During this closure, motorcyclist are advised to use the left-most lane near the toll booth as an alternate route (as indicated **BLUE** ).



**MAP 5: MOTORCYCLE LANE CLOSURE AT BATU 9 AND BATU 11 TOLLBOOTH ON CHERAS -KAJANG HIGHWAY (KAJANG AND KUALA LUMPUR-BOUND)**

**6. CONTINUATION OF SLIP ROAD CLOSURE AT THE EXIT 702 AND EXIT 703 ON CHERAS-KAJANG HIGHWAY (INTERMITTENT CLOSURE)**

<b>Date</b>	18 July 2017 – 31 July 2017
<b>Time</b>	10:00PM - 5:00AM
<b>Duration</b>	14 Nights
<b>Reasons</b>	To facilitate the maintenance works for Taman Suntex MRT Station and Sri Raya MRT Station, reinstatement of street lighting and permanent signage, road resurfacing (milling & pavement) and road marking works.

There will be a continuation of slip road closures at Exit 702 and Exit 703 (Kajang-bound and Kuala Lumpur-bound), Cheras-Kajang Highway from **18 July 2017 – 31 July 2017** starting from **10:00PM – 5:00AM**. These closures **will not be conducted simultaneously**.

**Closure A (Exit 702, Hulu Langat Interchange, Kajang Bound)**

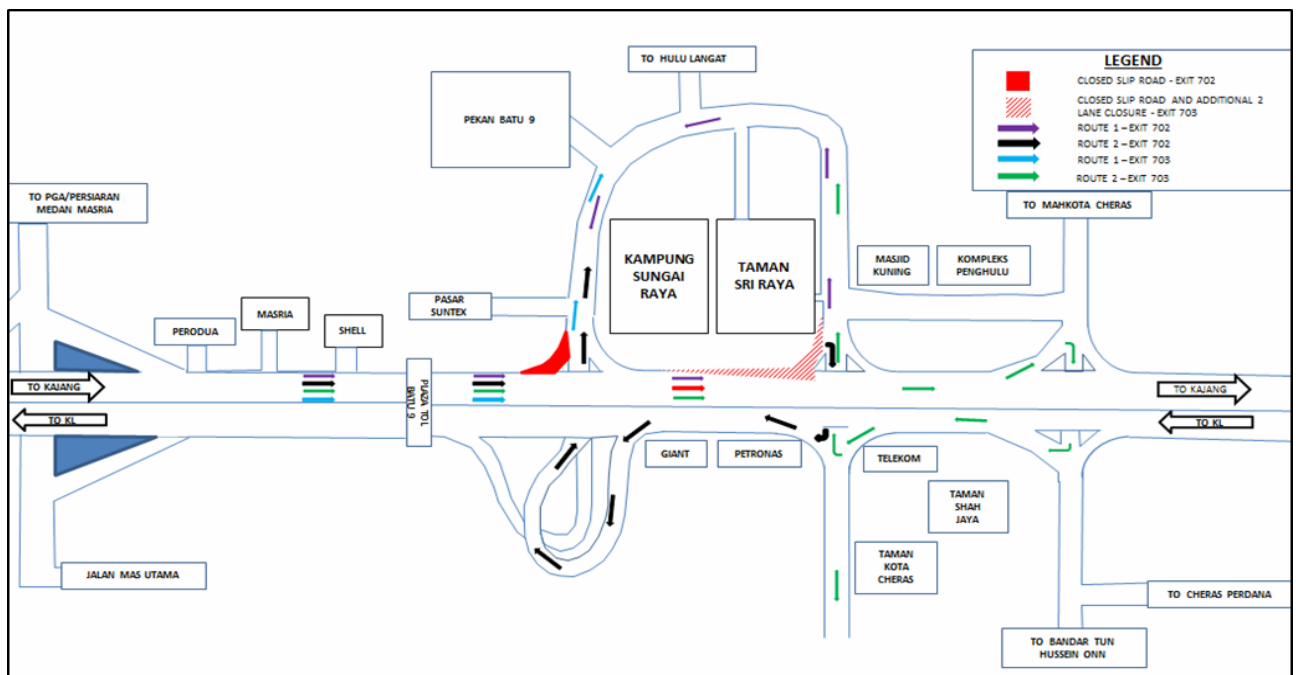
- Motorists from Kuala Lumpur heading towards Hulu Langat/Pekan Batu 9 will have to use Exit 703 (TELEKOM Interchange) entering Jalan Hulu Langat and proceed to Pekan Batu 9/Hulu Langat/Taman Suntex as indicated in **PURPLE** in the appended map,

**OR**

- Make a U-Turn at Exit 703 (entering Cheras-Kajang Highway – Lumpur Bound) and take Exit 702 Interchange entering Taman Suntex/Pekan Batu 9 as indicated in **BLACK** in the appended map.

**Closure B (Exit 703, Telekom Interchange, Kajang Bound)**

- Motorists from Kuala Lumpur heading towards Pekan Batu 9/ JalanCheras / Hulu Langat will have to turn left at Exit 702 as indicated in **BLUE** in themap.
- Motorists from Kuala Lumpur heading towards Taman Kota Cheras will be directed to make a U-turn at Bandar Tun Hussein Onn Interchange (Exit 704) and use slip road at Exit 703 (Taman Kota Cheras-bound) as indicated in **GREEN** in the appended map



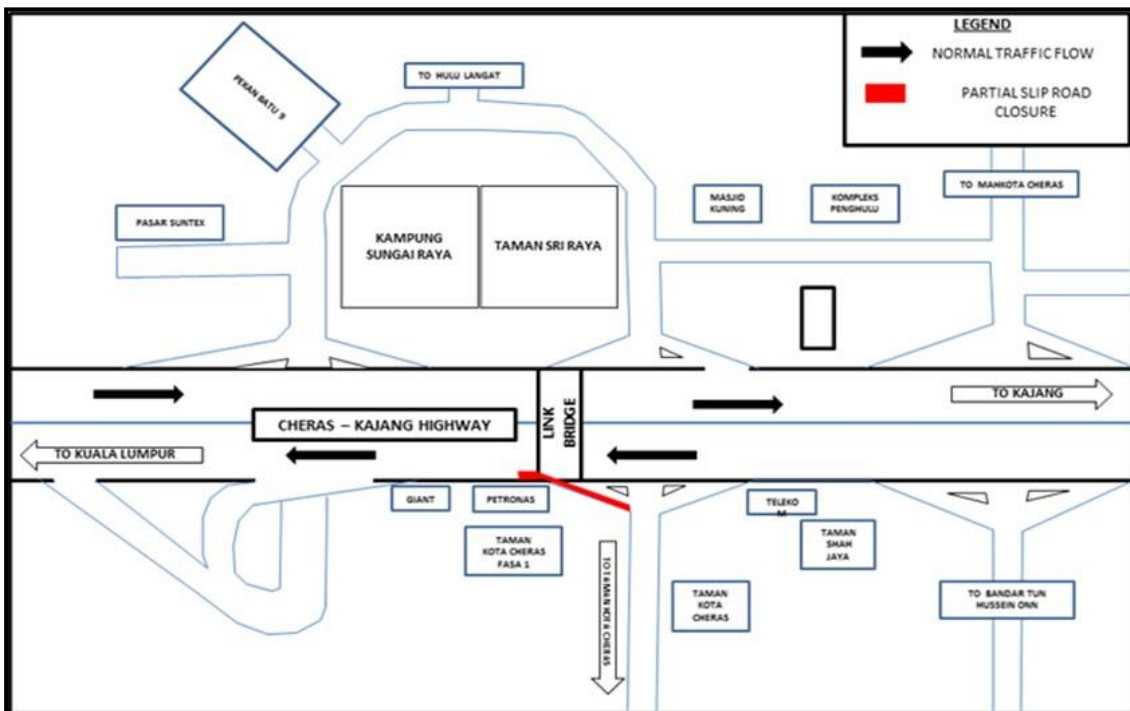
**MAP 6: SLIP ROAD CLOSURE AT EXIT 702 AND EXIT 703, CHERAS-KAJANG HIGHWAY (KAJANG AND KUALA LUMPUR BOUND)**

**7. CONTINUATION OF PARTIAL LANE AND SLIP ROAD CLOSURE AT EXIT 703 – TELEKOM INTERCHANGE ON CHERAS-KAJANG HIGHWAY (KUALA LUMPUR-BOUND) (INTERMITTENT CLOSURE)**

<b>Date</b>	18 July 2017 –31 July 2017
<b>Time</b>	10:00AM - 4:00PM and 10:00PM - 5:00AM
<b>Duration</b>	14 Days
<b>Reason</b>	To facilitate maintenance works for Taman Sri Raya Link Bridge, reinstatement of street lighting, road resurfacing (milling & pavement) and road marking works

There will be a partial lane closure on the slip road from Taman Kota Cheras entering the Cheras – Kajang Highway (Kuala Lumpur-bound, nearby Station Petronas Batu 9) from **18 July 2017 until 31 July 2017** between **10:00AM - 4:00PM** and between **10:00PM – 5:00AM**.

No road diversion will be made during this closure.



**MAP 7: PARTIAL LANE AND SLIP ROAD CLOSURE AT EXIT 703 – TELEKOM INTERCHANGE ON CHERAS-KAJANG HIGHWAY (KUALA LUMPUR BOUND)**

**8. FULL SLIP ROAD CLOSURE AT EXIT 704 – BANDAR TUN HUSSEIN ONN INTERCHANGE CHERAS ON CHERAS-KAJANG HIGHWAY (KUALA LUMPUR -BOUND) (INTERMITTENT CLOSURE)**

<b>Date</b>	18 July 2017 – 31 July 2017
<b>Time</b>	10:00PM - 5:00AM
<b>Duration</b>	14 Nights
<b>Reasons</b>	To facilitate reinstatement of street lighting, permanent signage, hardscape works and road marking works

There will be full slip road closure at Exit 704 at Bandar Tun Hussein Onn Interchange (Kuala Lumpur Bound) starting from **18 July 2017 until 31 July 2017** from **10:00 PM – 5:00AM**. The closure will be implemented in **TWO stages** as numbered in the map.

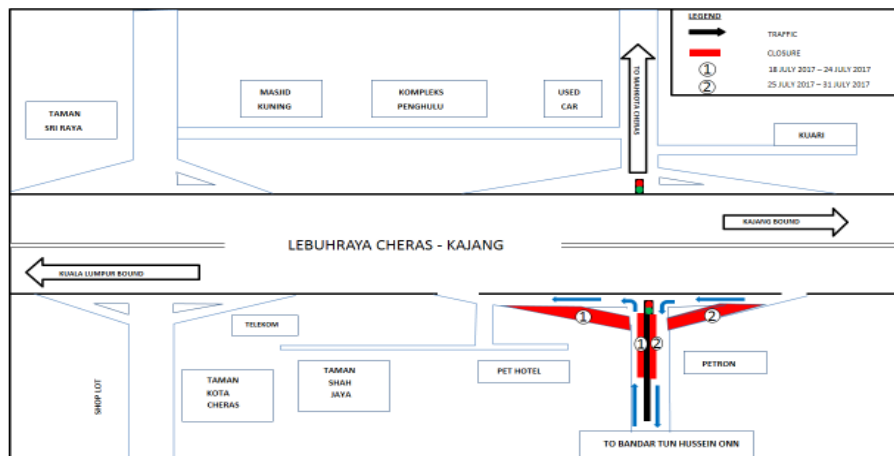
**Stage 1, numbered as 1 (18 July 2017 – 24 July 2017)**

Full slip road closure from Bandar Tun Hussein Onn entering Cheras Kajang Highway (Kuala Lumpur -bound).

**Stage 2, numbered as 2 (25 July 2017 – 31 July 2017)**

Full slip road closure from Kajang (Toll Bt 11, Cheras-Kajang Highway, Kuala Lumpur-bound) entering Bandar Tun Hussein Onn.

During this closure stages, motorists are advised to turn left after the traffic light nearby the slip road as indicated by BLUE arrow on the appended map. No road diversion will be implemented.



**MAP 8: FULL SLIP ROAD CLOSURE AT EXIT 704 BANDAR TUN HUSSEIN ONN INTERCHANGE**

For media enquiries, please contact:

Hillalluddin Mohd Ali                      Tel: +6019 201 0002                      [hillalluddin@azrb.com](mailto:hillalluddin@azrb.com)  
 Leanne Ann Susau                              Tel: +603 7493 3963                      [Leanne@mgjvkvmrt.com.my](mailto:Leanne@mgjvkvmrt.com.my)

**MMC GAMUDA KVMRT (PDP) SDN BHD** (927050-H)  
 Block A, Level 7, Menara Mustapha Kamal, PJ Trade Centre, No 8, Jalan PJU 8/8A,  
 Bandar Damansara Perdana, 47820 Petaling Jaya, Selangor, Malaysia  
 T: 603 7494 2200 F: 603 7722 2643 [www.kvmrt.com.my](http://www.kvmrt.com.my)