

**TRAFFIC ANNOUNCEMENT**  
**UPDATES ON TRAFFIC MANAGEMENT PLAN FOR MRT SSP CONSTRUCTION ALONG JALAN KUALA**  
**SELANGOR AND PRIMA DAMANSARA**  
**21 JUNE 2017**

**1. CONTINUATION OF LANE CLOSURES ALONG JALAN KUALA SELANGOR (SUNGAI BULOH-BOUND AND KEPONG-BOUND)**

<b>Date</b>	23 June 2017 - 22 July 2017
<b>Time</b>	24 hours
<b>Duration</b>	1 month
<b>Reason</b>	To facilitate loading/unloading material and open guard rail, site clearing and tree cutting, mapping and piloting, utilities relocation, temporary works - sheet pile and earth work, soil investigation, road widening and diversion, piling and pile cap, 33kv TNB cable relocation for MRT Construction Works

To facilitate our construction works, there will be continuation of lane closures along Jalan Kuala Selangor (Sungai Buloh-bound and Kepong-bound) from **23 June 2017 to 22 July 2017, intermittently.**

The traffic management plan involves the following closures:

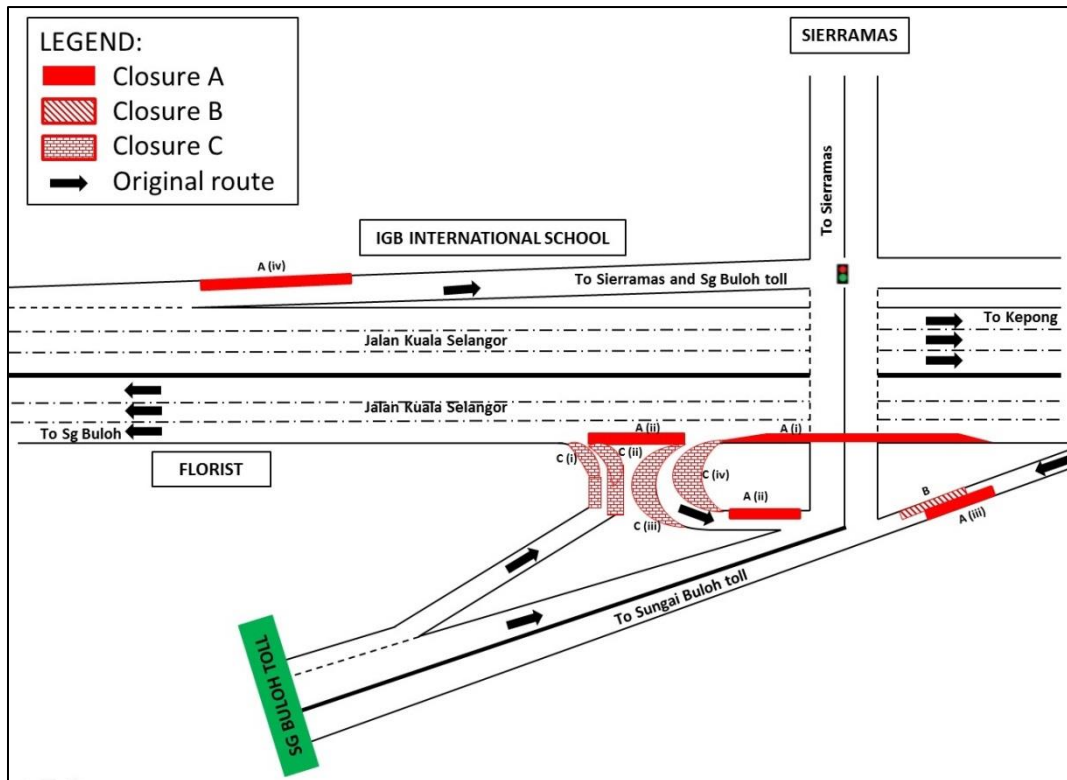
**Closure A (24 hours):**

- i. Left-most lane closure along Jalan Kuala Selangor (Sungai Buloh-bound) at KM47 before the ramp up to Sierramas.
- ii. Left-most lane closure along Jalan Kuala Selangor (Sungai Buloh-bound) after the ramp up to Sierramas for a stretch 100 metres; Left lane closure on the ramp up to Sierramas for a stretch 100 metres
- iii. Left lane closure towards Sungai Buloh toll for a stretch of 100 metres.
- iv. Left lane closure on the ramp up to Sierramas and IGB International School (Kepong-bound) for a stretch of 100 metres.

**Closure B (24 hours):** Right lane closure towards Sungai Buloh toll for a stretch of 100 metres. During this closure, Closure A (iii) will not take place.

**Closure C (10pm – 6am):**

- i. Partial left lane closure after Sungai Buloh toll before joining into Jalan Kuala Selangor (Sungai Buloh-bound) for a stretch of 80 metres.
- ii. Partial right lane closure after Sungai Buloh toll before joining into Jalan Kuala Selangor (Sungai Buloh-bound) for a stretch of 80 metres.
- iii. Partial right lane closure on the ramp up to Sierramas for a stretch 50 metres.
- iv. Partial left lane closure on the ramp up to Sierramas for a stretch of 50 metres.



**MAP 1 : CONTINUATION OF LANE CLOSURES ALONG JALAN KUALA SELANGOR (SUNGAI BULOH-BOUND AND KEPONG-BOUND)**

**2. CONTINUATION OF LANE CLOSURES ALONG JALAN PJU10/9 AND JALAN PJU10/9A (PRIMA DAMANSARA)**

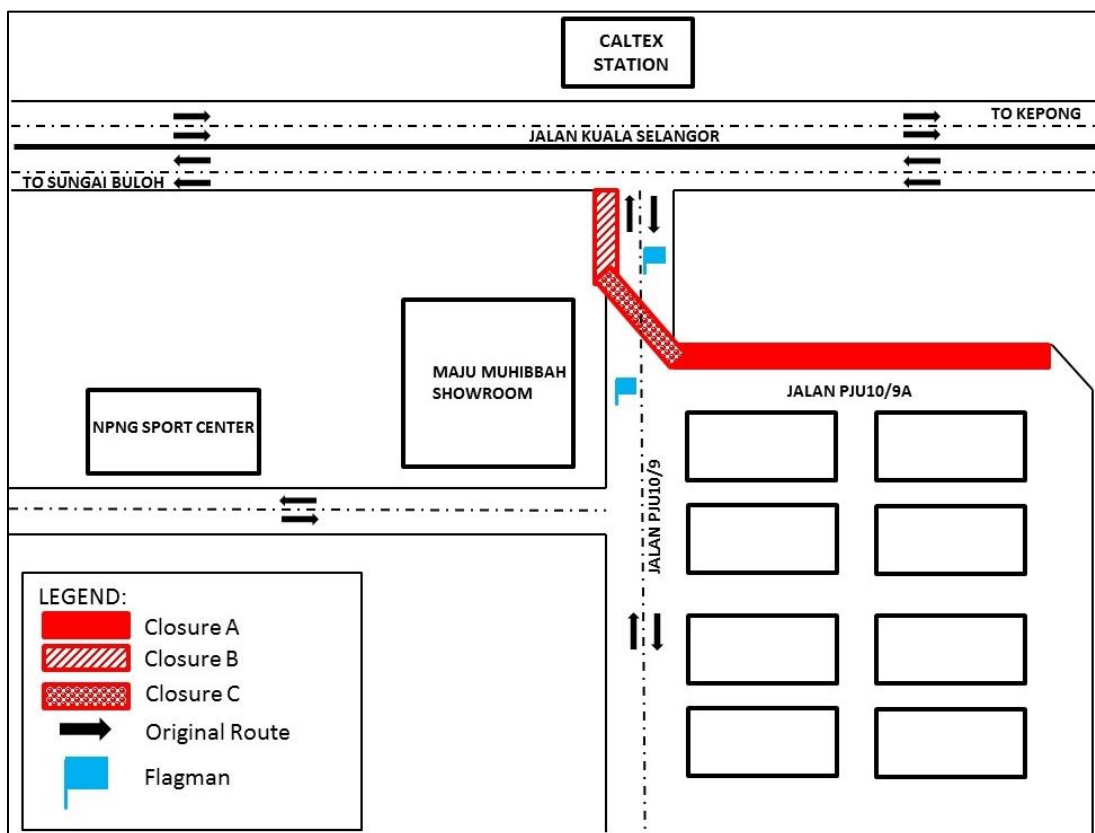
<b>Date</b>	23 June 2017 – 08 September 2017
<b>Time</b>	8AM-6PM; 10PM-6AM
<b>Duration</b>	78 days
<b>Reason</b>	To facilitate mapping and piloting, utilities relocation and premix for MRT construction works

There will be a long term lane closures along **Jalan PJU10/9 and Jalan PJU10/9A from 23 June 2017 until 08 September 2017 (daily except Tuesdays)**. The traffic management plan involves the following closures:

**Closure A (8am-6pm):** One lane of Jalan PJU10/9A will be closed for a stretch of approximately 100 metres during the day.

**Closure B (10pm-6am):** The edge road along Jalan PJU10/9 fronting Maju Muhibbah Showroom will be closed.

**Closure C (10pm-6am):** Jalan PJU10/9 will be closed diagonally stretching both lanes for approximately 100 metres daily. During the closure, motorists will be diverted to the opposite lane using "STOP" and "GO" method of traffic flow.



**MAP 2 : CONTINUATION OF LANE CLOSURES ALONG JALAN PJU10/9 AND JALAN PJU10/9A (PRIMA DAMANSARA)**

**For media enquiries, please contact:**

Mohd Sofie Hassan

Tel: +6019 228 3004

Leanne Ann Susau

Tel: +603 7493 3832

sofie@sunway.com.my

leanne@mgjv-kvmrt.com.my

**MMC GAMUDA KVMRT (PDP SSP) SDN BHD (1117100-V)**

Block A, Level 17, Menara Mustapha Kamal, PJ Trade Centre

No 8, Jalan PJU 8/8A, Bandar Damansara Perdana, 47820 Petaling Jaya

Selangor Darul Ehsan, Malaysia

T: +603-7494 2222 F: +603-7727 0222 [www.mymrt.com.my](http://www.mymrt.com.my)