

TRAFFIC ANNOUNCEMENT

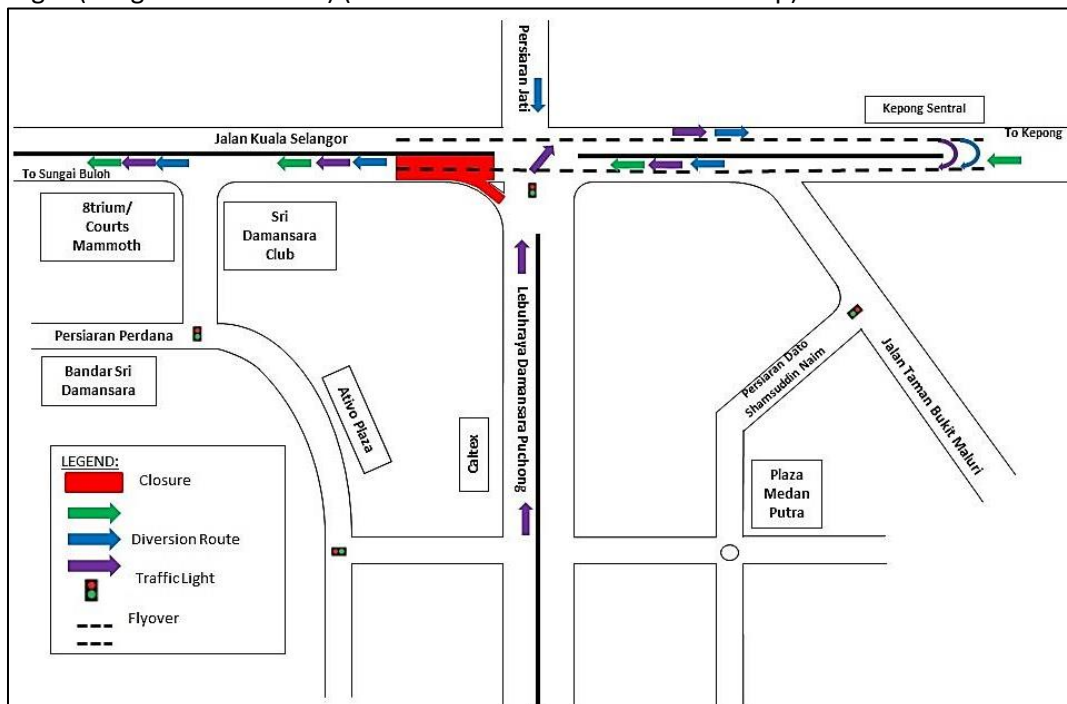
UPDATES ON TRAFFIC MANAGEMENT PLAN FOR MRT SSP CONSTRUCTION ALONG JALAN KUALA SELANGOR, JALAN KEPONG, JALAN SULTAN AZLAN SHAH AND JALAN JINJANG PERMAI 2 28 APRIL 2017

1. CONTINUATION OF SLIP ROAD CLOSURE TO JALAN KUALA SELANGOR FROM LEBUHRAYA DAMANSARA PUCHONG (SUNGAI BULOH-BOUND)

Date	01 May 2017 – 31 May 2017
Time	10:00PM – 6:00AM
Duration	1 month
Reason	To facilitate survey works, mapping and piloting and utilities relocation for MRT construction works

There will be a continuation of slip road closure to Jalan Kuala Selangor from Lebuhraya Damansara Puchong (LDP) from **1 May 2017 – 31 May 2017, 10:00PM-6:00AM daily**. During the closure, the following diversions will take place:

- **Motorists from LDP heading to Sungai Buloh** can turn right at the LDP/DUKE 2 Interchange traffic light to connect to Jalan Kuala Selangor (Kepong-bound) and make a U-Turn after Kepong Sentral KTM Station underneath the MRR2 flyover before joining the ramp up to Jalan Kuala Selangor (Sungai Buloh-bound) (as indicated in **PURPLE** arrows in map).
- **Motorists from Persiaran Jati heading to Sungai Buloh** will be diverted to turn left to Jalan Kuala Selangor (Kepong-bound) and then make a U-Turn after Kepong Sentral KTM Station underneath the MRR2 flyover before joining the ramp up to Jalan Kuala Selangor (Sungai Buloh-bound) (as indicated in **BLUE** arrows in map).
- **Motorists from Kepong heading to Sungai Buloh** are advised to use the ramp up to Jalan Kuala Selangor (Sungai Buloh-bound) (as indicated in **GREEN** arrows in map).



MAP 1 : CONTINUATION OF SLIP ROAD CLOSURE TO JALAN KUALA SELANGOR FROM LEBUHRAYA DAMANSARA PUCHONG (SUNGAI BULOH-BOUND)

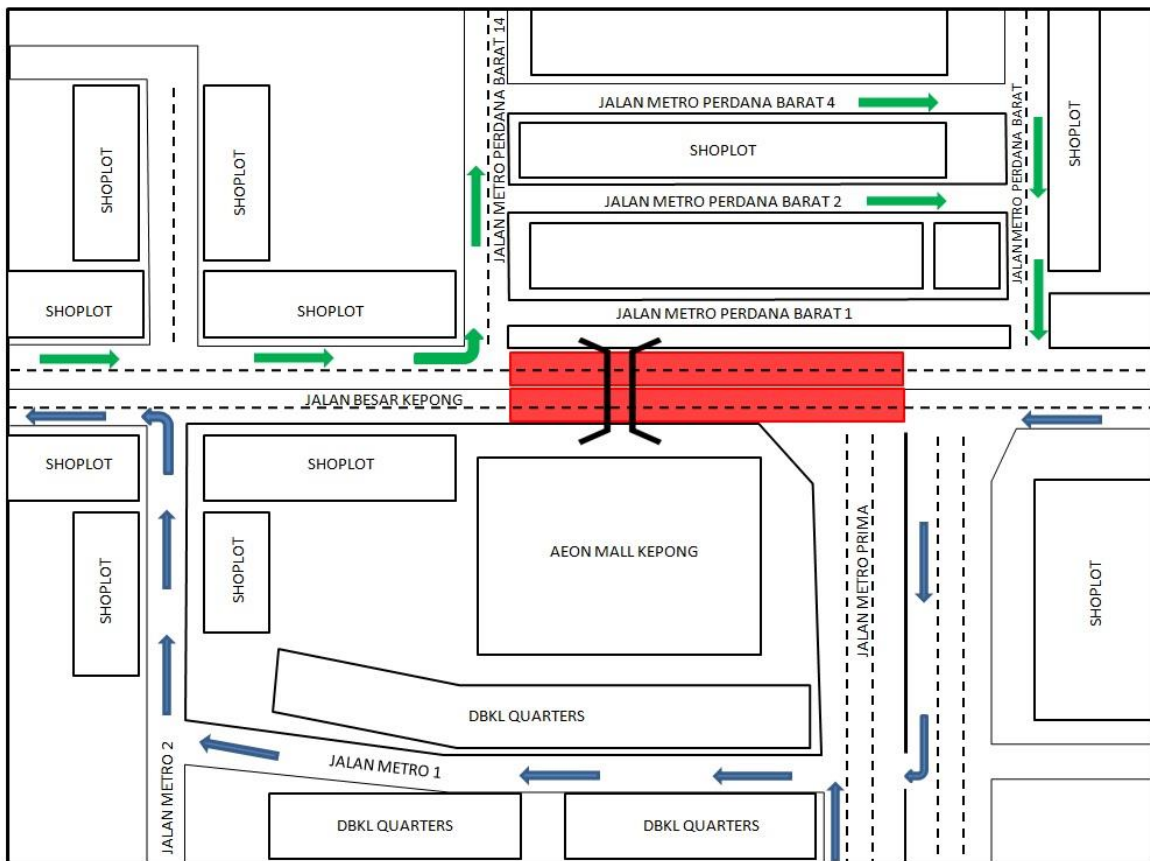
2. CONTINUATION OF LANE CLOSURES ALONG JALAN KEPONG (SUNGAI BULOH-BOUND AND JINJANG BOUND)

Date	01 May 2017 – 18 May 2017
Time	11pm – 6am
Duration	15 days
Reason	To facilitate demolition of the pedestrian bridge in front of AEON Mall for MRT construction works

There will be a continuation of lane closures along Jalan Kepong (Sungai Buloh-Bound and Jinjang-Bound) in front of the AEON Mall Kepong, starting from **1 May 2017 until 18 May 2017, 11pm to 6am (daily), intermittently**. During the closure, motorists are advised to use these following routes:

Motorists from Sungai Buloh heading to Jinjang: Motorists are advised to turn left into Jalan Metro Perdana Barat 14 and turn right either to Jalan Metro Perdana Barat 2 or Jalan Metro Perdana Barat 4 and turn right again into Jalan Metro Perdana Barat to join Jalan Kepong (as indicated in **GREEN** arrows in map).

Motorists from Jinjang heading to Sungai Buloh : Motorists are advised to turn left into Jalan Metro Prima and turn right at Jalan Metro 1 before turning right at Jalan Metro 2 to join Jalan Kepong (as indicated in **BLUE** arrows in map).



MAP 2 : CONTINUATION OF LANE CLOSURES ALONG JALAN KEPONG (SUNGAI BULOH-BOUND AND JINJANG BOUND)

3. CONTINUATION OF NIGHT LANE CLOSURES BY STAGES ALONG JALAN JINJANG PERMAI 2 & JALAN KEPONG (SOUTH-BOUND)

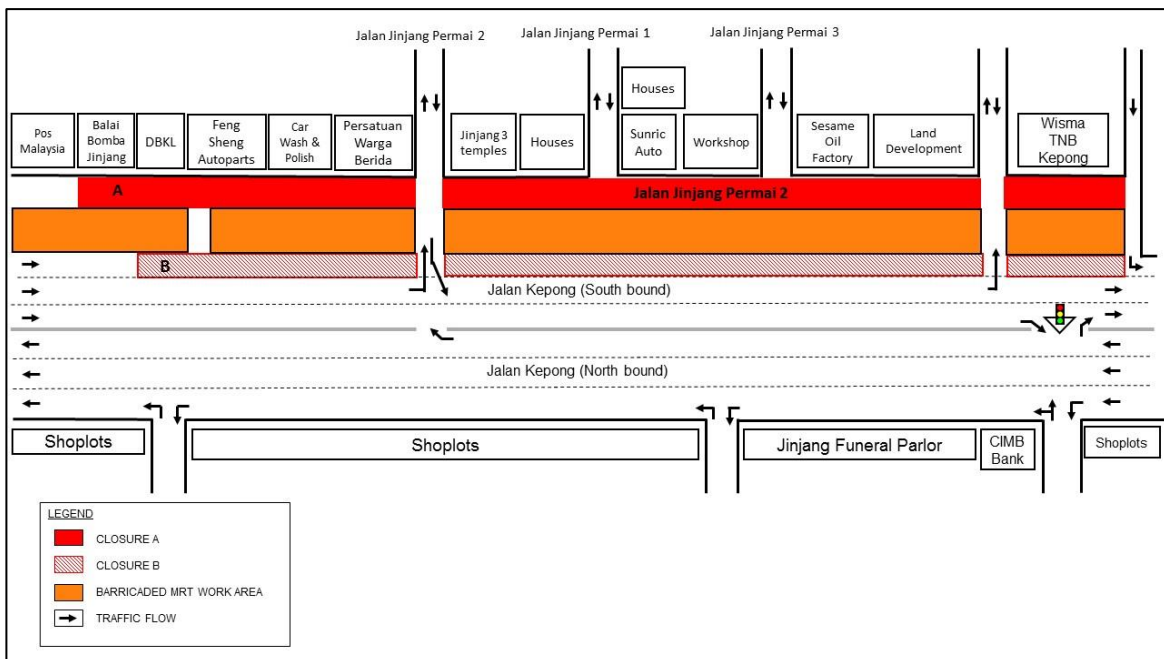
Date	03 May 2017 – 31 July 2017
Time	10pm – 6am
Duration	3 months
Reason	To facilitate loading/unloading material and utilities relocation for MRT construction works.

There will be a continuation of night lane closure by stages along Jalan Jinjang Permai 2 and Jalan Kepong from **03 May 2017 to 31 July 2017, 10pm - 6am**. The traffic management plan involves the following closures:

Closure A: Internal road of Jalan Jinjang Permai 2 starting from Balai Bomba Jinjang to Wisma TNB Kepong. Flagman will be in place using "STOP" and "GO" method to indicate the traffic flow.

Closure B: Left most lane closure by stages along Jalan Kepong (South-bound) for a stretch of 180 meters.

The closures are in stages and at any one time there will be two (2) lanes made available for motorists on Jalan Kepong (South-bound).



MAP 3 : CONTINUATION OF NIGHT LANE CLOSURES BY STAGES ALONG JALAN JINJANG PERMAI 2 & JALAN KEPONG (SOUTH-BOUND)

4. CONTINUATION OF NIGHT LANE CLOSURES ALONG SULTAN AZLAN SHAH - NEAR POS MALAYSIA (KL-BOUND AND KEPONG-BOUND)

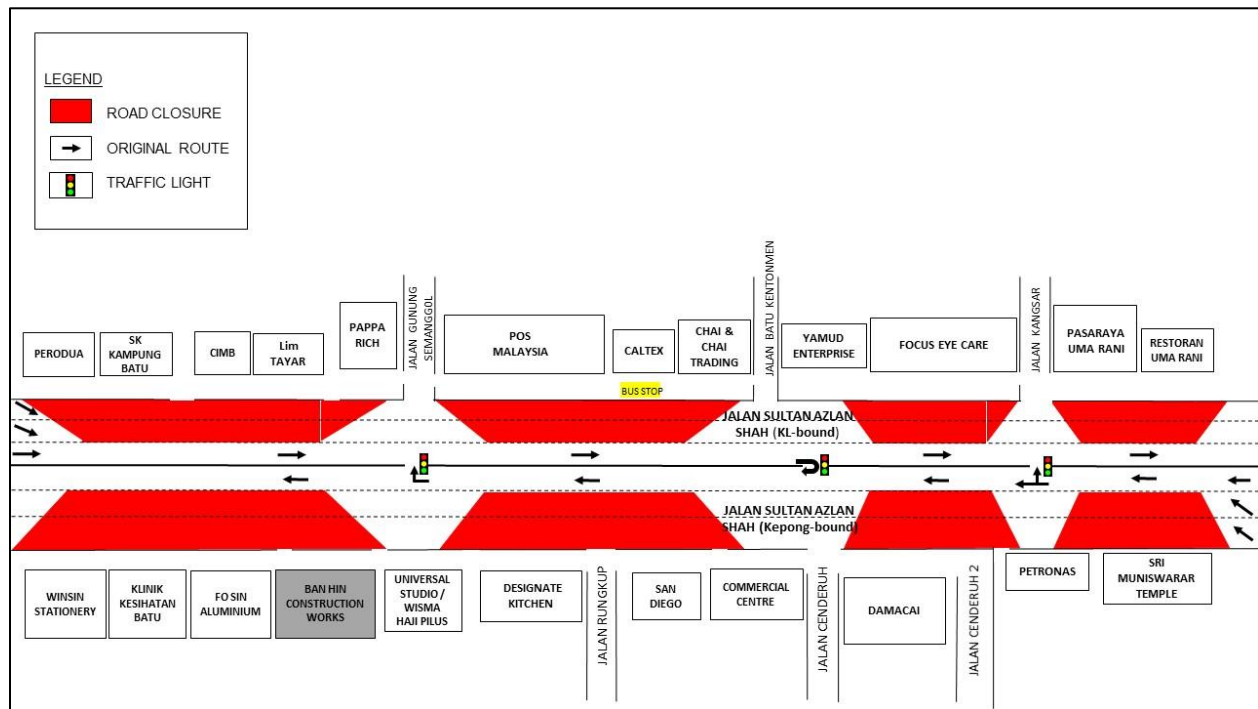
Date	03 May 2017 – 31 July 2017
Time	10pm – 6am
Duration	3 months
Reason	To facilitate loading/unloading material, tree cutting, piloting, soil investigation, utilities relocation, drainage works, retaining wall, road curb demolition, road widening and box culvert works for MRT construction works.

There will be continuation of night lane closures by stages along Jalan Sultan Azlan Shah (near Pos Malaysia) from **03 May 2017 to 31 July 2017, 10pm - 6am intermittently.**

The traffic management plan involves the following closures:

Closure 1

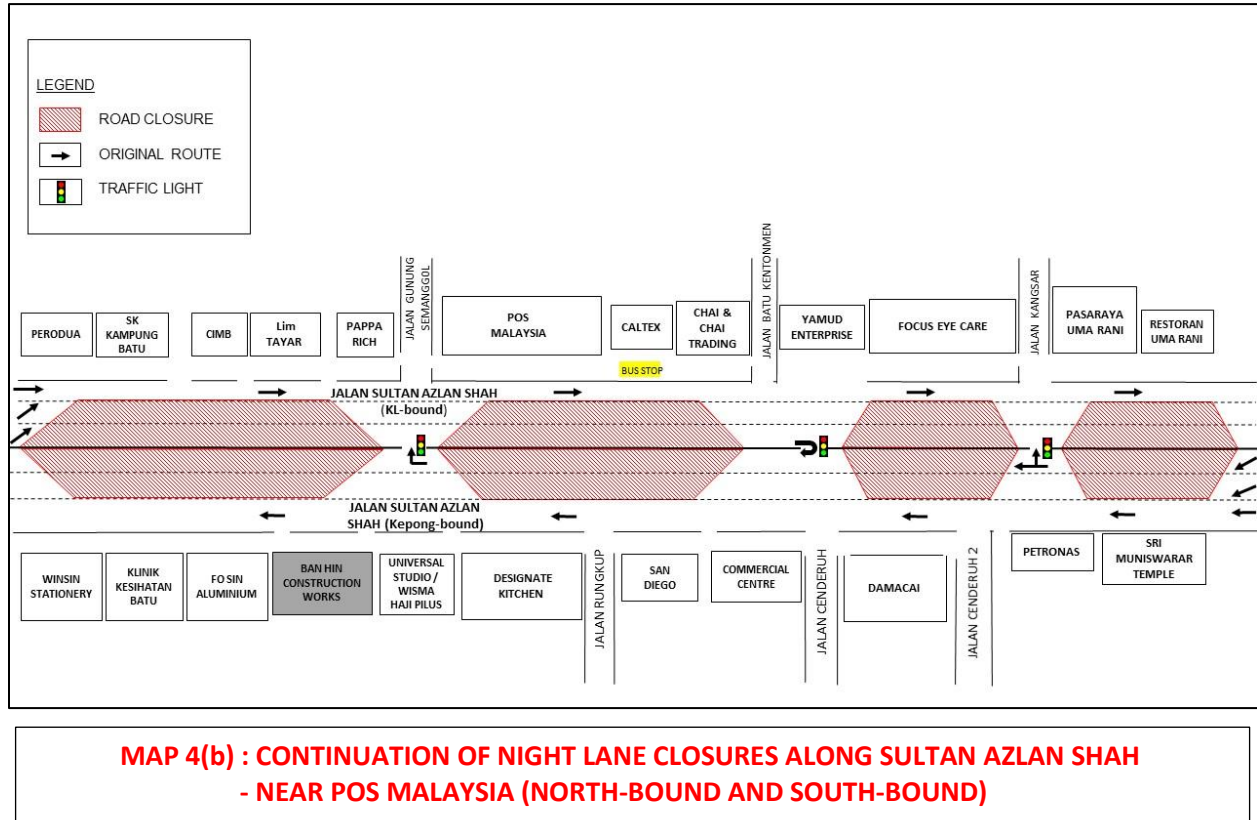
- Jalan Sultan Azlan Shah (Kepong-bound) - Slow and middle lane closures from Sri Muniswarar Temple to Fo Sin Aluminium.
- Jalan Sultan Azlan Shah (KL-bound) - Slow and middle lane closures from CIMB to Uma Rani.



MAP 4(a): CONTINUATION OF NIGHT LANE CLOSURES ALONG SULTAN AZLAN SHAH - NEAR POS MALAYSIA (KL-BOUND AND KEPONG-BOUND)

Closure 2

- Jalan Sultan Azlan Shah (Kepong-bound) - Fast and middle lane closures from Sri Muniswarar Temple to Fo Sin Aluminium.
- Jalan Sultan Azlan Shah (KL-bound) - Fast and middle lane closures from CIMB to Uma Rani.



The closures will be implemented intermittently and at any one time there will be one (1) lane made available for motorists on both bounds.

5. CONTINUATION OF NIGHT LANE CLOSURES ALONG SULTAN AZLAN SHAH – NEAR KOMPLEKS MUTIARA (NORTH-BOUND AND SOUTH-BOUND)

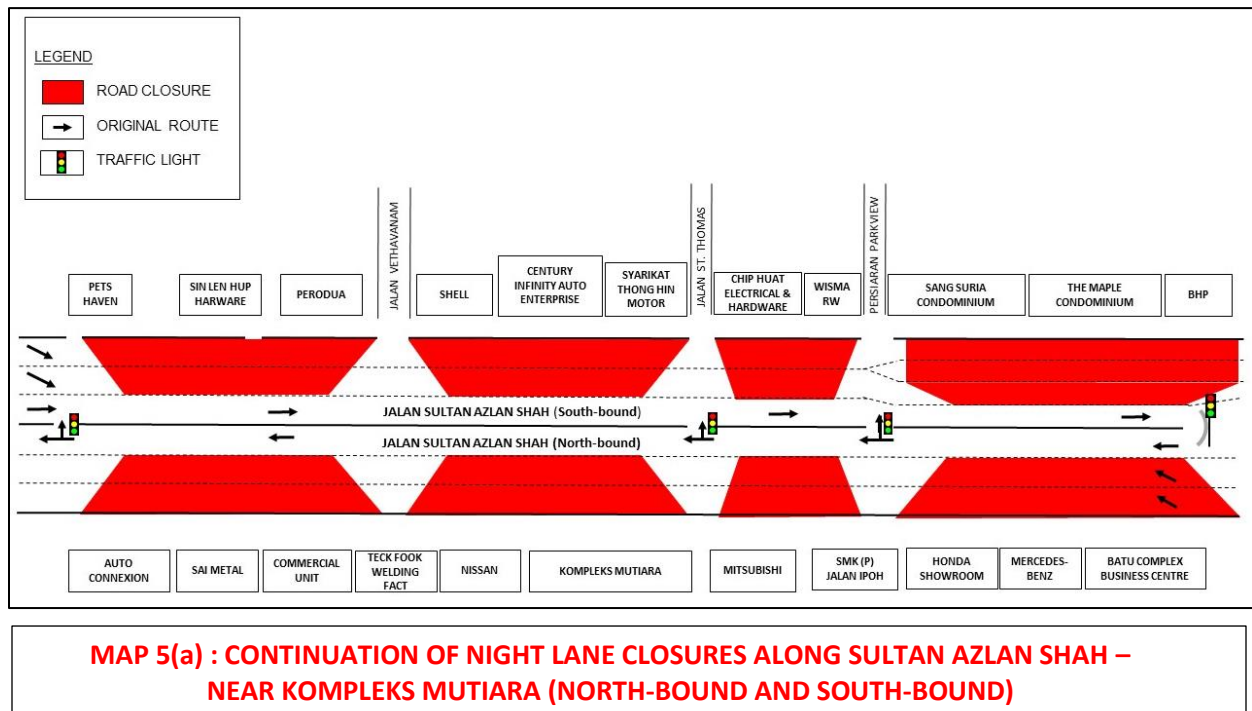
Date	03 May 2017 – 31 July 2017
Time	10pm – 6am
Duration	3 months
Reason	To facilitate loading/unloading material, tree cutting, piloting, soil investigation, utilities relocation, drainage works, retaining wall, road curb demolition, road widening and box culvert works for MRT construction works.

There will be continuation of night lane closures by stages along Jalan Sultan Azlan Shah (near Kompleks Mutiara) from **03 May 2017 to 31 July 2017, 10pm - 6am intermittently.**

The traffic management plan involves the following closures:

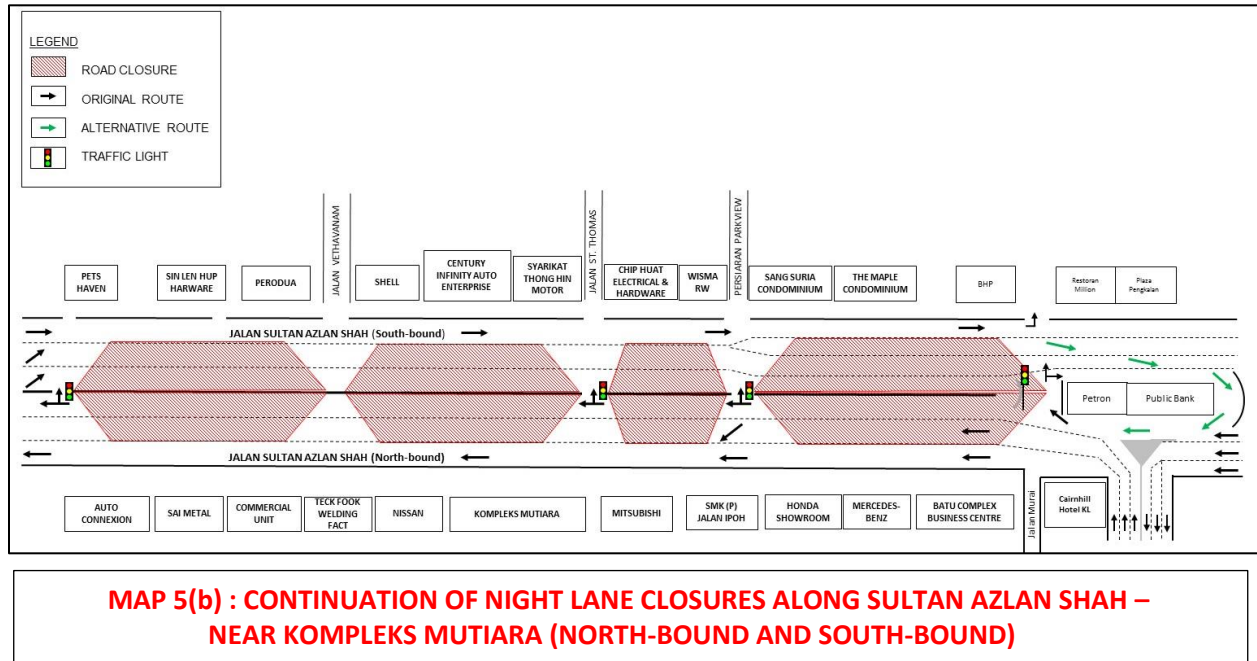
Closure

- Jalan Sultan Azlan Shah (North-bound) - Slow and middle lane closures from Batu Complex Business Centre to Auto Connexion.
- Jalan Sultan Azlan Shah (South-bound) - Slow and middle lane closures from Pets Haven to BHP. Lane closures from Sang Suria Condominium to BHP will take place from **8pm – 12am only.**



Closure 2

- Jalan Sultan Azlan Shah (North-bound) - Fast and middle lane closures from Batu Complex Business Centre to Auto Connexion.
- Jalan Sultan Azlan Shah (South-bound) - Fast and middle lane closures from Pets Haven to BHP. Lane closures from Sang Suria Condominium to BHP will take place from **8pm – 12am only**. The U-turn in front of BHP will also be closed during this closure. Motorists from Jalan Sultan Azlan Shah (South-bound) heading to Jalan Sultan Azlan Shah (North-bound) will have to go straight and make the U-turn after Public Bank.



The closures will be implemented intermittently and at any one time there will be one (1) lane made available for motorists on both bounds.

For media enquiries, please contact:

Mohd Sofie Hassan (**Item 1**)

Zaini Ghazali (**Item 2**)

Juliet Choong Wai Gaik (**Item 3-5**)

Leanne Ann Susau (**Item 1-5**)

Tel: +6019 228 3004

Tel: +6012 328 1821

Tel: +6012 601 0318

Tel: +603 7493 3832

sofie@sunway.com.my

zainighazali@azrb.com

julietchoong@ijm.com

leanne@mgjv-kvmrt.com.my

MMC GAMUDA KVMRT (PDP SSP) SDN BHD (1117100-V)

Block A, Level 17, Menara Mustapha Kamal, PJ Trade Centre

No 8, Jalan PJU 8/8A, Bandar Damansara Perdana, 47820 Petaling Jaya

Selangor Darul Ehsan, Malaysia

T: +603-7494 2222 F: +603-7727 0222 www.mymrt.com.my