

TRAFFIC ANNOUNCEMENT
UPDATES ON TRAFFIC MANAGEMENT PLAN FOR MRT CONSTRUCTION
AT CHERAS-KAJANG HIGHWAY (KAJANG AND KUALA LUMPUR BOUND)
14 APRIL 2017

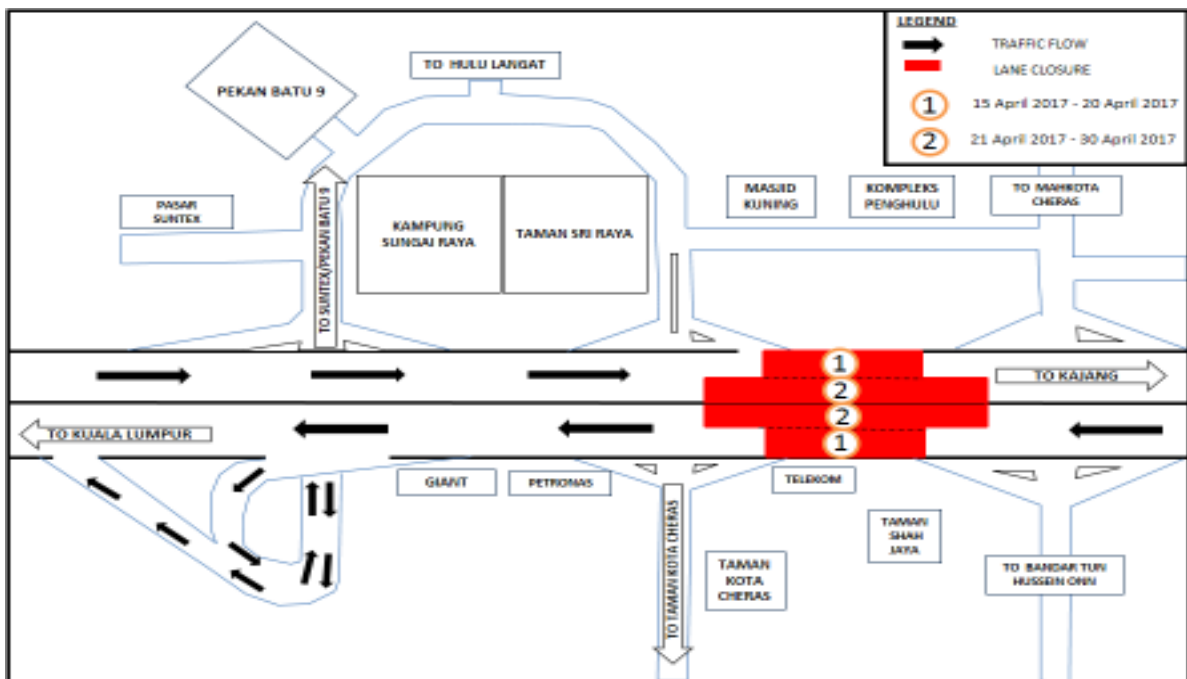
1. CONTINUATION OF LANE CLOSURE AT KM 14.0 UNTIL KM 16.0 ON CHERAS-KAJANG HIGHWAY (KUALA LUMPUR AND KAJANG-BOUND)

Date	15 April 2017 – 30 April 2017
Time	10:00PM – 5:00AM
Duration	15 Nights
Reasons	To facilitate the reinstatement of street lights and permanent signages, installation of guard rail, road resurfacing works (milling & pavement) and road marking works.

There will be a continuation of two - lane closure at KM 14.0 until KM 16.0 for the stretch of 2KM on the Cheras-Kajang Highway (Kuala Lumpur-bound and Kajang-bound) from **15 April 2017 – 30 April 2017**. This intermittent closure will be conducted as follow:

- Closure 1 – (Kuala Lumpur-bound and Kajang-bound) (15 April 2017 – 20 April 2017)**
- Closure 2 – (Kuala Lumpur-bound and Kajang-bound) (21 April 2017 – 30 April 2017)**

Two lanes will be made available to motorists at any time of the closure.



MAP 1: LANE CLOSURE AT KM 14.0 UNTIL KM 16.0 AT CHERAS KAJANG HIGHWAY (KUALA LUMPUR AND KAJANG BOUND)

2. CONTINUATION OF SLIP ROAD CLOSURE AT THE EXIT 702 AND EXIT 703, CHERAS-KAJANG HIGHWAY (INTERMITTENT CLOSURE)

Date	15 April 2017 – 30 April 2017
Time	10:00PM until 5:00AM
Duration	15 Nights
Reasons	To facilitate the maintenance works for Taman Suntex MRT Station and Sri Raya MRT Station, reinstatement of street lights, reinstatement of permanent signages, road resurfacing works (milling & pavement) and road marking works.

There will be a continuation of slip road closures at Exit 702 and Exit 703 (Kajang-bound and Kuala Lumpur-bound), Cheras-Kajang Highway from **15 April 2017 – 30 April 2017** starting **10:00PM – 5:00AM**. These closures **will not be conducted simultaneously**.

Closure A (Exit 702, Hulu Langat Interchange, Kajang Bound)

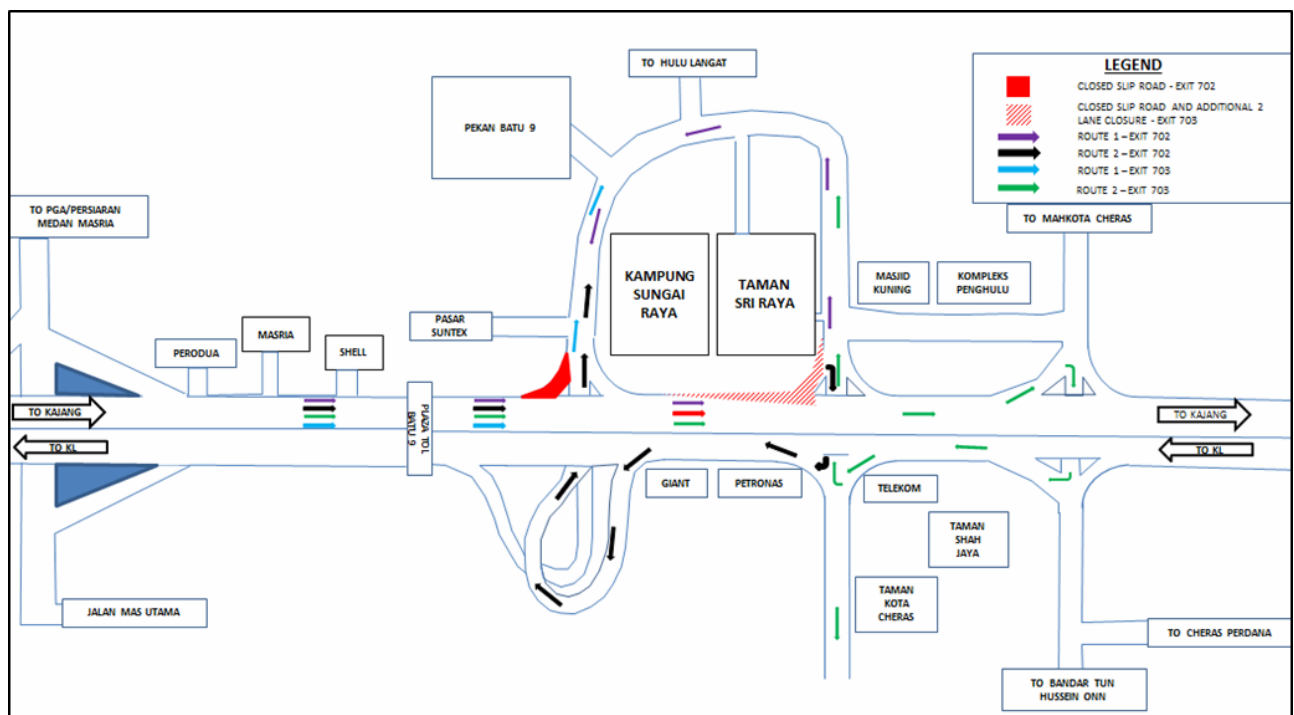
- Motorists from Kuala Lumpur heading towards Hulu Langat/Pekan Batu 9 will have to use Exit 703 (TELEKOM Interchange) entering Jalan Hulu Langat and proceed to Pekan Batu 9/Hulu Langat/Taman Suntex as indicated in **PURPLE** in the appended map,

OR

- Make a U-Turn at Exit 703 (entering Cheras-Kajang Highway – Lumpur Bound) and take Exit 702 Interchange entering Taman Suntex/Pekan Batu 9 as indicated in **BLACK** in the appended map.

Closure B (Exit 703, Telekom Interchange, Kajang Bound)

- Motorists from Kuala Lumpur heading towards Pekan Batu 9/ Jalan Cheras / Hulu Langat will have to turn left at Exit 702 as indicated in **BLUE** in the map.
- Motorists from Kuala Lumpur heading towards Taman Kota Cheras will be directed to make a U-turn at Bandar Tun Hussien Onn Interchange (Exit 704) and use slip road at Exit 703 (Taman Kota Cheras-bound) as indicated in **GREEN** in the appended map



MAP 2: SLIP ROAD CLOSURE AT THE EXIT 702 AND EXIT 703, CHERAS-KAJANG HIGHWAY (KAJANG AND KUALA LUMPUR BOUND)

**3. CONTINUATION OF LANE CLOSURE AT EXIT 702 – HULU LANGAT INTERCHANGE
(INTERMITTENT CLOSURE)**

Date	15 April 2017 – 30 April 2017
Time	10:00PM until 5:00AM
Duration	15 Nights
Reasons	To facilitate the maintenance works at Taman Suntex MRT Station, reinstatement of street lights, reinstatement of permanent signages, road resurfacing works (milling & pavement) and road marking works.

A lane closure and a partial slip road closure will be implemented at the Exit 702 – Hulu Langat Interchange from **15 April 2017 – 30 April 2017** from between **10:00PM - 5:00AM**.

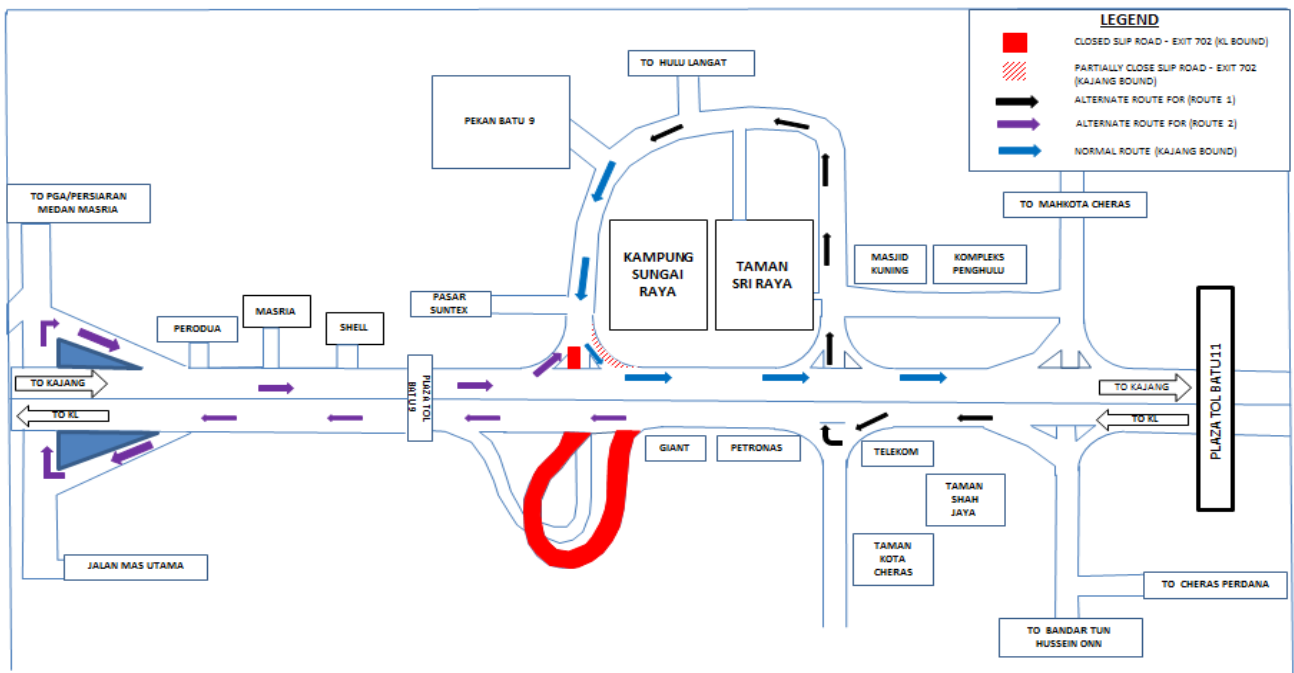
A. Closure at Exit 702, Hulu Langat Interchange (Kuala Lumpur Bound) - Under the flyover of Exit 702 - Hulu Langat Interchange entering Pasar Suntex/Hulu Langat/Pekan Batu 9 (from Kajang).

- During this closure, motorists heading to Pasar Suntex/Hulu Langat/Pekan Batu 9 (KL-Bound) have to take Exit 703 – TELEKOM Interchange and turn right heading to Hulu Langat/Pekan Batu 9 as indicated in **BLACK** in the appended map.

OR

- Motorists can make a U-Turn at Exit 701 PGA Interchange and take the slip road at Exit 702 – Hulu Langat Interchange heading to Hulu Langat/Pekan Batu 9 as indicated in **PURPLE** in the appended map.

B. Partial slip road closure from Pasar Suntex heading to Kajang (entering Cheras – Kajang Highway). During this closure one lane will be made available for motorists.

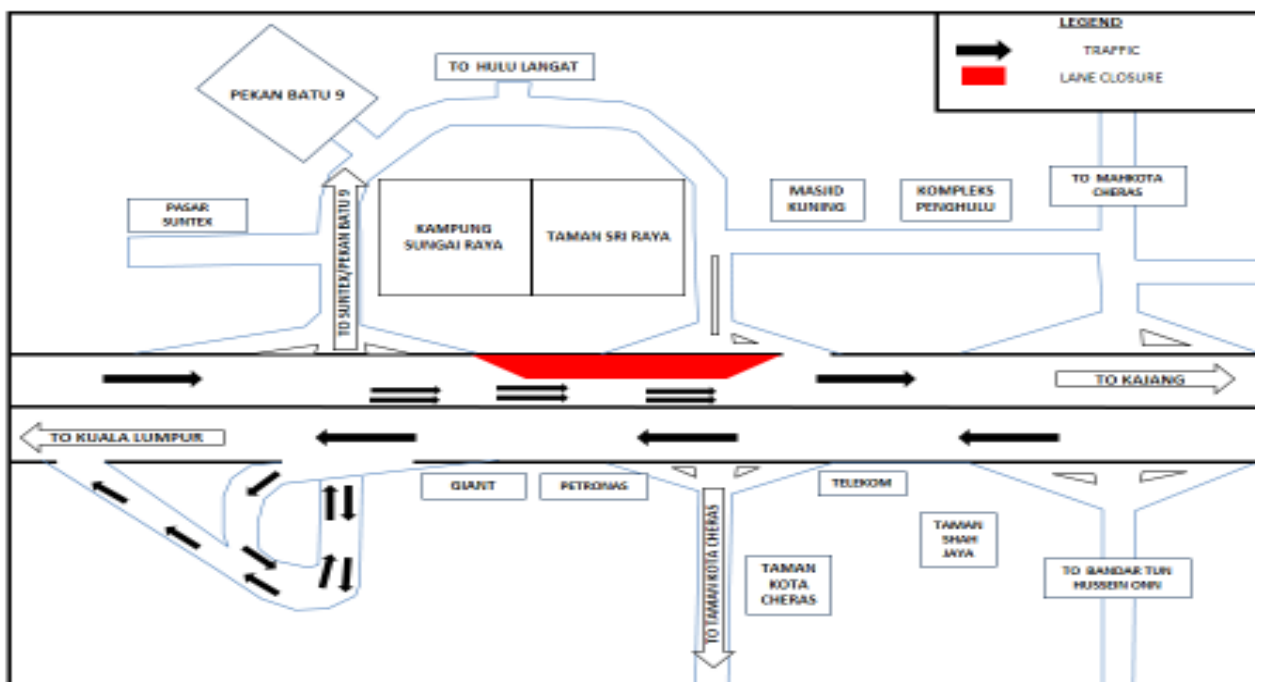


MAP 3: LANE CLOSURE AT EXIT 702 – HULU LANGAT INTERCHANGE

4. CONTINUATION OF TWO LANE CLOSURE AT KM 13.3 UNTIL KM 14.7 CHERAS-KAJANG HIGHWAY (KAJANG BOUND) (INTERMITTENT CLOSURE)

Date	15 April 2017 – 30 April 2017
Time	10:00PM until 5:00AM
Duration	15 Nights
Reasons	To facilitate the construction link bridge, reinstatement of street lights, permanent signages, road resurfacing works (milling & pavement) and road marking works.

There will be a continuation of two-lane closure at Cheras – Kajang Highway (Kajang bound) from **15 April 2017 – 30 April 2017** between **10:00PM - 5:00 AM** stretching from KM 13.3 until KM 14.7 for **1.4 km** (nearby Kampung Sungai Raya and Taman Sri Raya). During this closure, **TWO LANES** will remain open for motorist heading to Kajang from Kuala Lumpur.



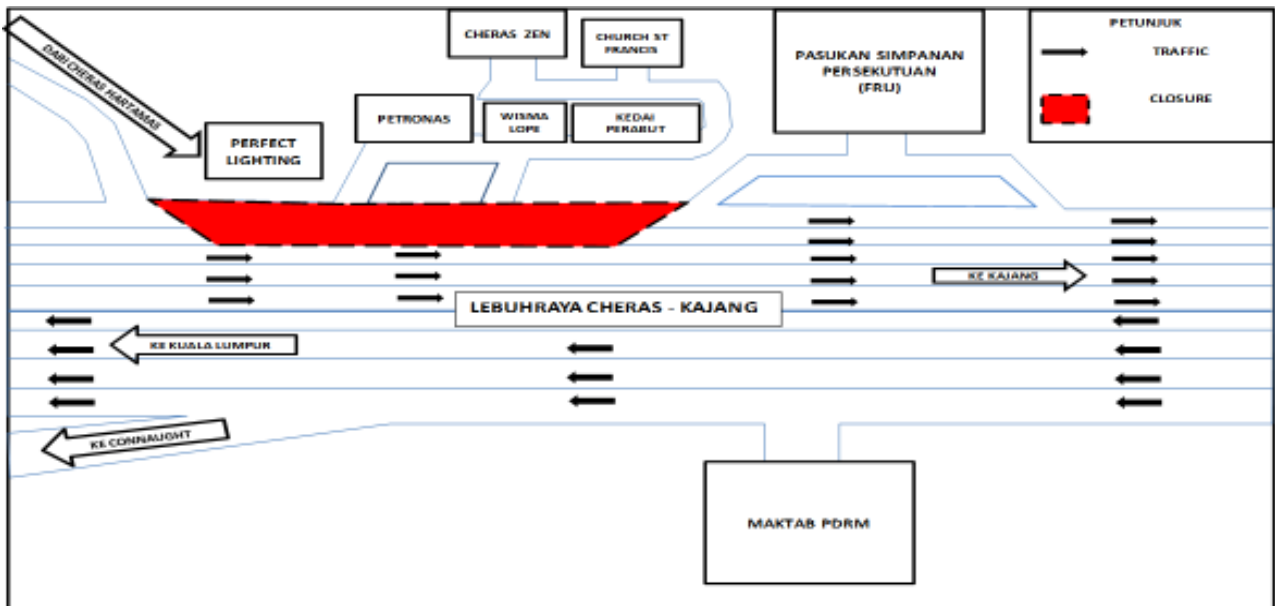
MAP 4: TWO-LANE CLOSURE AT KM 13.3 UNTIL KM 14.7 CHERAS KAJANG HIGHWAY (KAJANG BOUND)

5. CONTINUATION OF ONE LANE CLOSURE AT KM10.6 UNTIL KM11.6 ON CHERAS-KAJANG HIGHWAY (KAJANG BOUND) (INTERMITTENT CLOSURE)

Date	15 April 2017 – 30 April 2017
Time	10:00PM until 5:00AM
Duration	15 Nights
Reasons	To facilitate the reinstatement of street light, reinstatement of permanent signages, road resurfacing works (milling & pavement) and road marking works.

There will be continuation of a two -lane closure at the Cheras – Kajang Highway (Kajang Bound) from KM10.6 until KM11.6 for the stretch of **1KM** (from Cheras Hartamas entering Cheras – Kajang Highway (Kajang Boun) until slip road entering FRU Batu 7, Cheras).

During this closure, **THREE lanes** will remain open for motorists heading to Kajang from Kuala Lumpur.



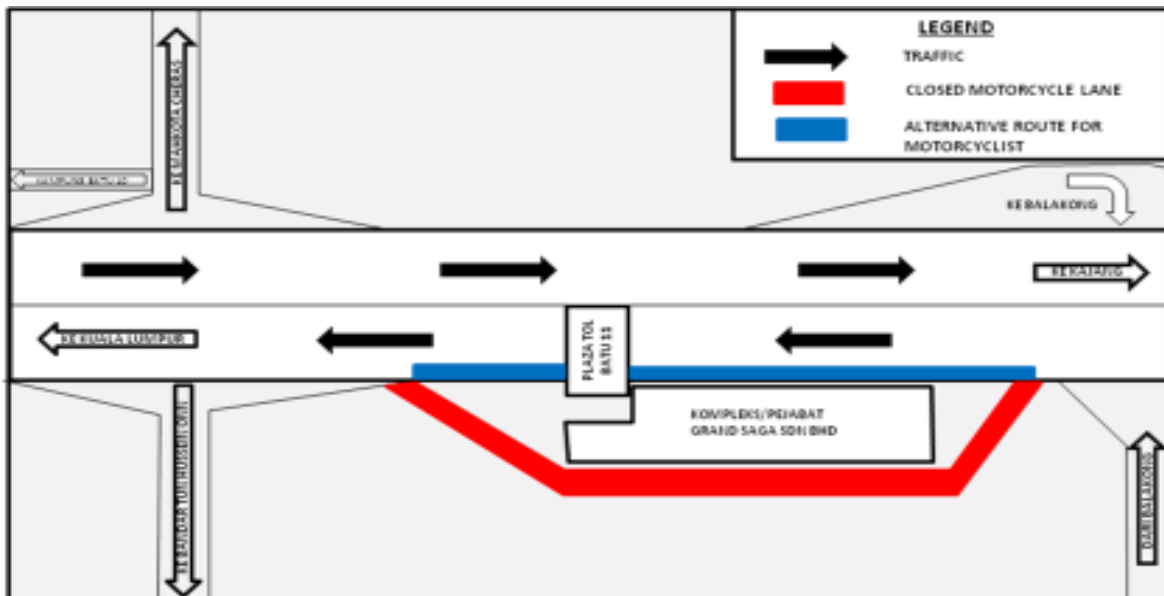
MAP 5: ONE LANE CLOSURE AT KM 10.6 UNTIL KM 11.6 ON CHERAS-KAJANG HIGHWAY (KAJANG BOUND)

6. CONTINUATION OF MOTORCYCLE LANE CLOSURE AT BATU 11 TOLL BOOTH OF CHERAS -KAJANG HIGHWAY (KUALA LUMPUR BOUND) (INTERMITTENT CLOSURE)

Date	15 April 2017 – 30 April 2017
Time	10:00AM until 4:00PM and 9:00PM until 5:00AM
Duration	15 Days
Reasons	To facilitate reinstatement of street lights, permanent signages, landscape works, road resurfacing works (milling and pavement) and road marking works.

There will be a continuation of closure motorcycle lane closure at Batu 11 Toll booth on the Cheras – Kajang Highway (Kuala Lumpur bound) from **15 April 2017 – 30 April 2017** starting from **10:00AM – 4:00PM** and from **9:00PM – 5:00AM**.

During this closure, motorcyclist are advised to use the left-most lane near the toll booth as an alternate route (as indicated in **BLUE**).



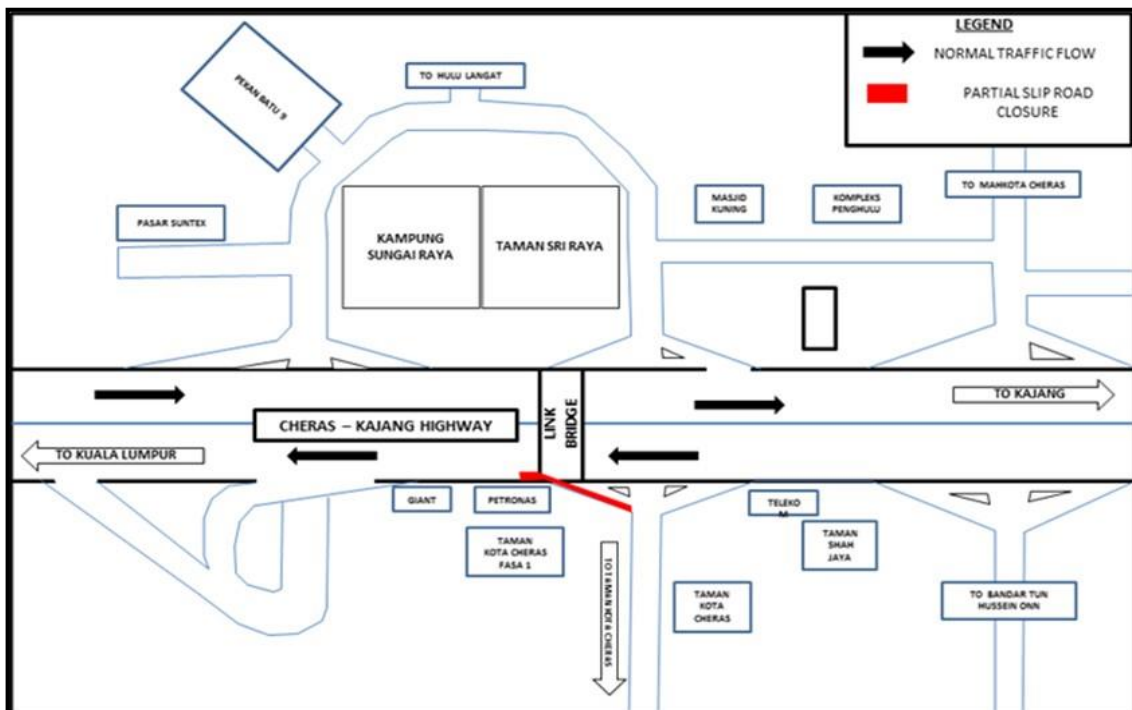
MAP 6: CONTINUATION OF MOTORCYCLE LANE CLOSURE AT BATU 11 TOLL BOOTH OF CHERAS – KAJANG HIGHWAY (KUALA LUMPUR BOUND)

7. CONTINUATION OF PARTIAL LANE AND SLIP ROAD CLOSURE AT EXIT 703 – TELEKOM INTERCHANGE ON CHERAS-KAJANG HIGHWAY (KUALA LUMPUR BOUND) (INTERMITTENT CLOSURE)

Date	15 April 2017 – 30 April 2017
Time	10:00AM until 4:00PM and 10:00PM until 5:00AM
Duration	15 Days
Reason	To facilitate maintenance works for Taman Sri Raya Link Bridge, reinstatement of street light, road resurfacing works (milling & pavement) and road marking works

There will be a partial lane closure on the slip road from Taman Kota Cheras entering the Cheras – Kajang Highway (Kuala Lumpur-bound, nearby Station Petronas Batu 9) from **15 April 2017 until 30 April 2017** between **10:00AM - 4:00PM** and between **10:00PM – 5:00AM**.

No road diversion will be made during this closure.



MAP 7: PARTIAL LANE AND SLIP ROAD CLOSURE AT EXIT 703 – TELEKOM INTERCHANGE ON CHERAS-KAJANG HIGHWAY (KUALA LUMPUR BOUND)

8. CONTINUATION OF PARTIAL LANE CLOSURE AT EXIT 701 – PGA INTERCHANGE CHERAS-KAJANG HIGHWAY (KAJANG-BOUND) (INTERMITTENT CLOSURE)

Date	20 April 2017 – 30 April 2017
Time	10:00AM until 4:00PM and 10:00PM until 5:00AM
Duration	10 Nights
Reasons	To facilitate reinstatement of street light, permanent signage, landscape work, road resurfacing works (milling & pavement) and road marking works

There will be a partial lane closure at Exit 701 at the PGA Interchange (Kajang-bound and Kuala Lumpur Bound) starting from **20 April 2017 – 30 April 2017** from **10:00AM – 4:00PM** and from **10:00 PM – 5:00AM**. The closure will be implemented in **TWO stages** as follow:

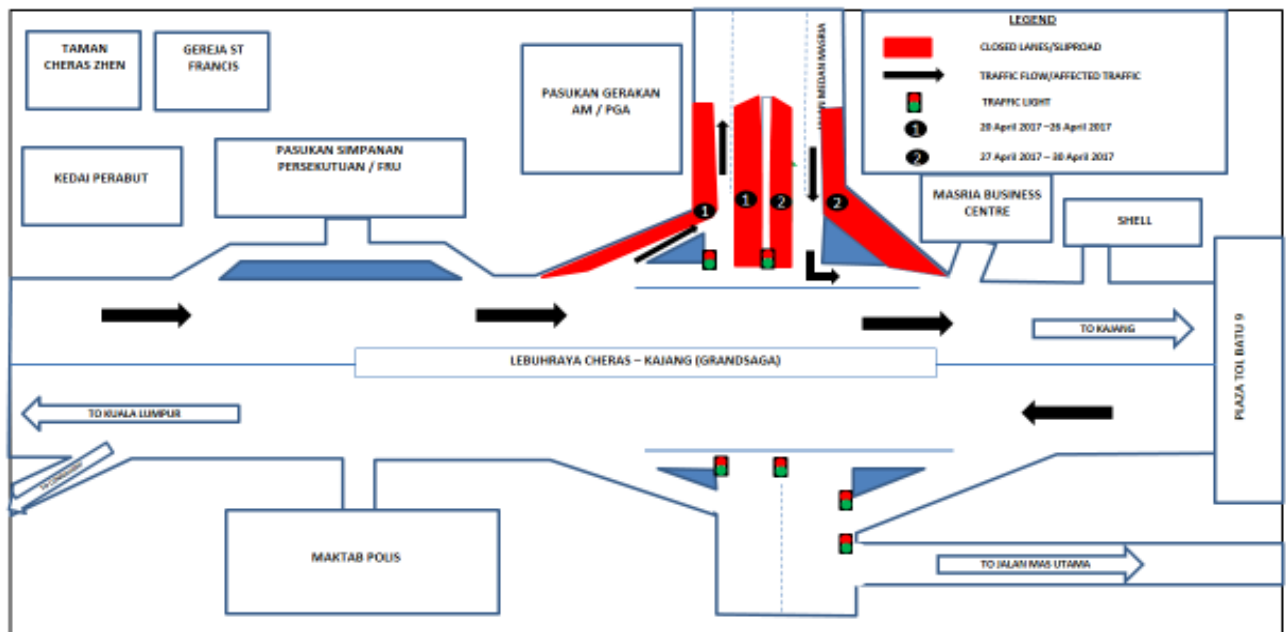
Stage 1 (20 April 2017 – 26 April 2017)

- One lane closure on the left-most lane on the slip road entering PGA – Kajang Bound and Median 1 lane closure heading towards PGA Bound.

Stage 2 (27 April 2017 – 30 April 2017)

- Slip road closure (Kajang Bound) from PGA and Median 1 lane closure heading towards Kuala Lumpur Bound.

During this closure stages, motorists are advised to use the remaining opened lane on each bound. For the slip road closure during Stage 2, motorists (heading to Kajang) are advised to turn left after the traffic light (Kajang Bound). No other road diversion will be implemented during this closure.



MAP 8: PARTIAL LANE CLOSURE AT EXIT 701 – PGA INTERCHANGE CHERAS-KAJANG HIGHWAY (KAJANG BOUND)

9. FULL SLIP ROAD CLOSURE AT EXIT 704 – BANDAR TUN HUSSEIN ONN INTERCHANGE AT CHERAS-KAJANG HIGHWAY (KUALA LUMPUR BOUND) (INTERMITTENT CLOSURE)

Date	20 April 2017 – 30 April 2017
Time	10:00PM until 5:00AM
Duration	10 Nights
Reasons	To facilitate reinstatement of street light, permanent signages, landscape works, road resurfacing works (milling & pavement) and road marking works

There will be full slip road closure at Exit 704 at Bandar Tun Hussein Onn Interchange (Kuala Lumpur Bound) starting from **20 April 2017 – 30 April 2017** from **10:00 PM – 5:00AM**. The closure will be implemented in **TWO stages** as numbered in map.

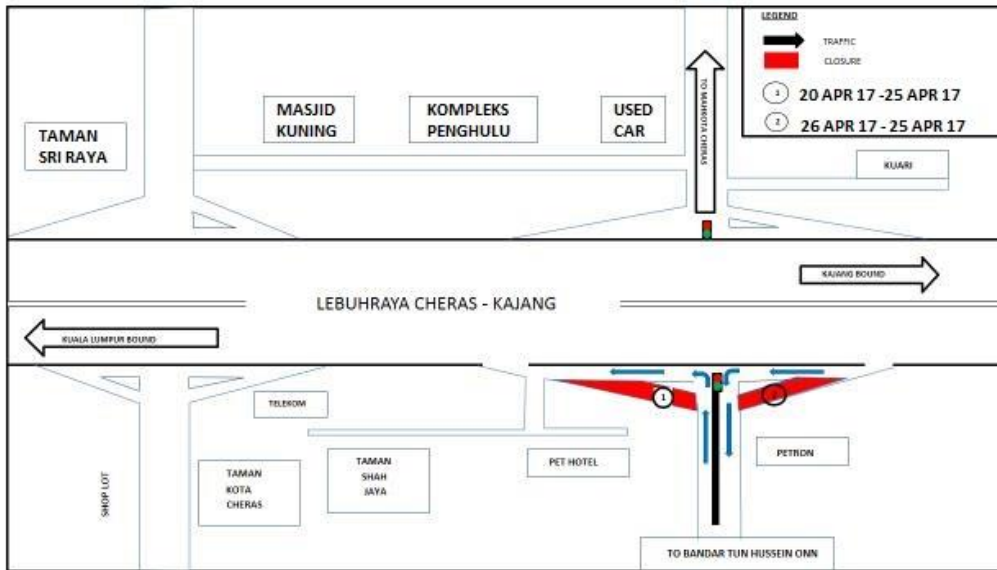
Stage 1, numbered as 1 (20 April 2017 – 25 April 2017)

- Full slip road closure from Bandar Tun Hussein Onn entering Cheras Kajang Highway (Kuala Lumpur bound).

Stage 2, numbered as 2 (26 April 2017 – 30 April 2017)

- Full slip road closure from Kajang (Toll Bt 11, Cheras Kajang Highway - Kuala Lumpur bound) entering Bandar Tun Hussein Onn.

During this closure stages, motorists are advised to turn left after the slip road traffic light as indicated by **BLUE** arrow on the appended map. No road diversion will be implemented.



MAP 9: FULL SLIP ROAD CLOSURE AT EXIT 704 BANDAR TUN HUSSEIN ONN INTERCHANGE

For media enquiries, please contact:

Hillalluddin Mohd Ali Tel: +6019 201 0002 hillalluddin@azrb.com
 Leanne Ann Susau Tel: +603 7493 3963 Leanne@mgjv-kvmrt.com.my

MMC GAMUDA KVMRT (PDP) SDN BHD (927050-H)
 Block A, Level 7, Menara Mustapha Kamal, PJ Trade Centre, No 8, Jalan PJU 8/8A,
 Bandar Damansara Perdana, 47820 Petaling Jaya, Selangor, Malaysia
 T: 603 7494 2200 F: 603 7722 2643 www.kvmrt.com.my