

TRAFFIC ANNOUNCEMENT
CONTINUATION OF LANE CLOSURES ALONG JALAN KUALA SELANGOR (SUNGAI BULOH-BOUND)
7 APRIL 2017

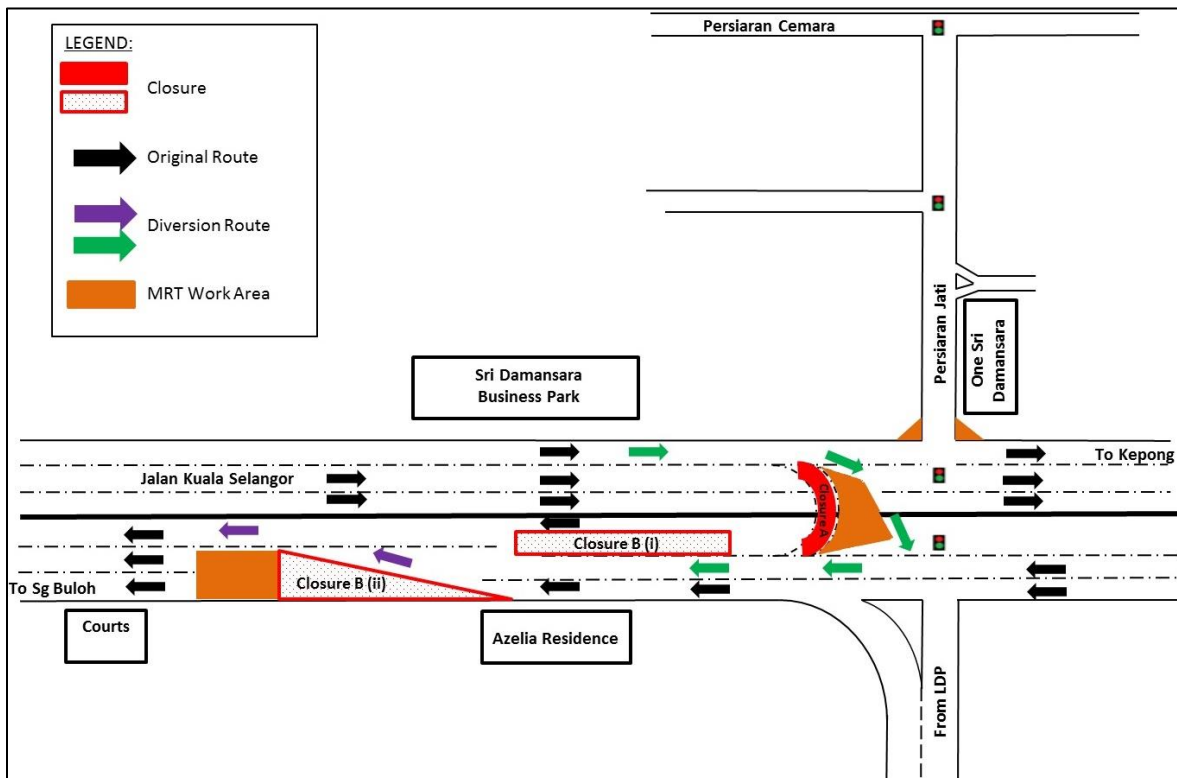
Date	11 April 2017 - 10 July 2017
Time	11:00pm – 6:00am
Duration	3 Months
Reason	To facilitate survey works, mapping and piloting and utilities relocation for MRT construction works

There will be a continuation of a long-term traffic management plan along Jalan Kuala Selangor (Sungai Buloh-bound) from **11 April 2017 to 10 July 2017**. The traffic management plan involves the following closures:

Closure A: (24 hours daily): U-Turn closure at KM52 of Lebuhraya Damansara Puchong (LDP) and DUKE 2 Interchange (Kepong-bound). Motorists on Kepong-bound wanting to head back to Sungai Buloh will be diverted to make the U-turn at the traffic light to LDP (as indicated in **GREEN** arrows in map).

Closure B (i) (11pm - 6am): One lane closure at KM52. The closure will take place at the ramp down towards Sungai Buloh (from Kepong), for an approximate stretch of 80 metres in front of Azelia Residence.

Closure B (ii) (11pm - 6am): Two lane closures at KM52.5. Motorists from Kepong/KL/LDP will be diverted to the right-most-lane of Jalan Kuala Selangor (Sungai Buloh-bound), for a stretch of approximately 50 metres. The stretch of closure is in between Courts Mammoth and Azelia Residence (as indicated in **PURPLE** arrows in map).



For media enquiries, please contact:

Mohd Sofie Hassan

Tel: +6019 228 3004

Leanne Ann Susau

Tel: +603 7493 3832

sofie@sunway.com.my

leanne@mgjv-kvmrt.com.my

MMC GAMUDA KVMRT (PDP SSP) SDN BHD (1117100-V)

Block A, Level 17, Menara Mustapha Kamal, PJ Trade Centre

No 8, Jalan PJU 8/8A, Bandar Damansara Perdana, 47820 Petaling Jaya

Selangor Darul Ehsan, Malaysia

T: +603-7494 2222 F: +603-7727 0222 www.mymrt.com.my