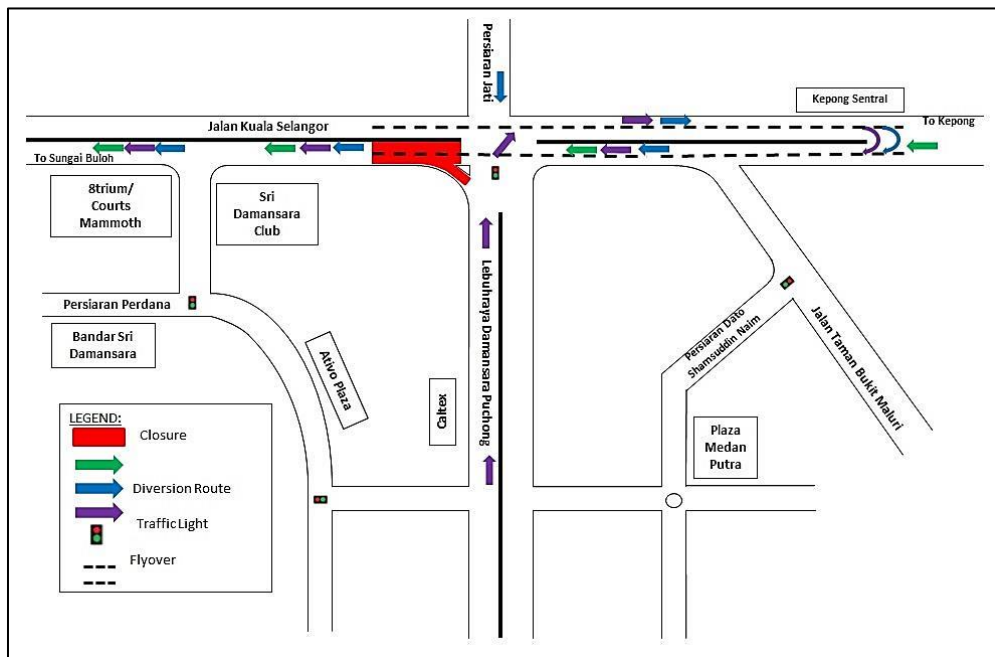


**TRAFFIC ANNOUNCEMENT**  
**CONTINUATION OF SLIP ROAD CLOSURE TO JALAN KUALA SELANGOR FROM LEBUHRAYA**  
**DAMANSARA PUCHONG (SUNGAI BULOH-BOUND)**  
**4 APRIL 2017**

<b>Date</b>	05 April 2017 - 30 April 2017
<b>Time</b>	10:00PM – 6:00AM
<b>Duration</b>	26 days
<b>Reason</b>	To facilitate survey works, mapping and piloting and utilities relocation for MRT construction works

There will be a continuation of slip road closure to Jalan Kuala Selangor from Lebuhraya Damansara Puchong (LDP) from **5 April 2017 – 30 April 2017, 10:00PM-6:00AM daily**. During the closure, the following diversions will take place:

- **Motorists from LDP heading to Sungai Buloh** can turn right at the LDP/DUKE 2 Interchange traffic light to connect to Jalan Kuala Selangor (Kepong-bound) and make a U-Turn after Kepong Sentral KTM Station underneath the MRR2 flyover before joining the ramp up to Jalan Kuala Selangor (Sungai Buloh-bound) (as indicated in **PURPLE** arrows in map).
- **Motorists from Persiaran Jati heading to Sungai Buloh** will be diverted to turn left to Jalan Kuala Selangor (Kepong-bound) and then make a U-Turn after Kepong Sentral KTM Station underneath the MRR2 flyover before joining the ramp up to Jalan Kuala Selangor (Sungai Buloh-bound) (as indicated in **BLUE** arrows in map).
- **Motorists from Kepong heading to Sungai Buloh** are advised to use the ramp up to Jalan Kuala Selangor (Sungai Buloh-bound) (as indicated in **GREEN** arrows in map).



**For media enquiries, please contact:**

Mohd Sofie Hassan

Leanne Ann Susau

Tel: +6019 228 3004

Tel: +603 7493 3832

sofie@sunway.com.my

leanne@mgjv-kvmrt.com.my

**MMC GAMUDA KVMRT (PDP SSP) SDN BHD (1117100-V)**

Block A, Level 17, Menara Mustapha Kamal, PJ Trade Centre

No 8, Jalan PJU 8/8A, Bandar Damansara Perdana, 47820 Petaling Jaya

Selangor Darul Ehsan, Malaysia

T: +603-7494 2222 F: +603-7727 0222 [www.mymrt.com.my](http://www.mymrt.com.my)