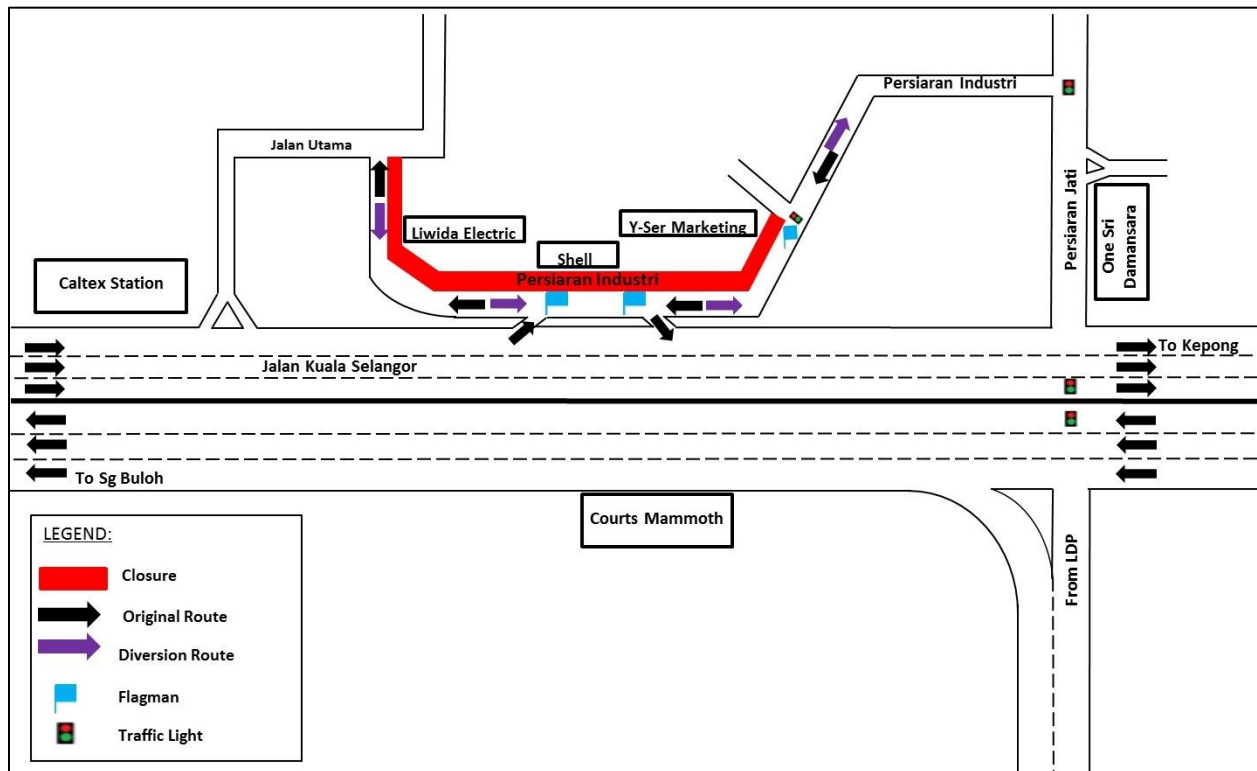


**TRAFFIC ANNOUNCEMENT
CONTINUATION OF LONG-TERM LANE CLOSURE ALONG PERSIARAN INDUSTRI (KEPONG-BOUND)
24 MARCH 2017**

Date	27 March 2017 – 16 May 2017
Time	10pm – 6am
Duration	1 month 12 days
Reason	To facilitate site clearing and tree cutting, mapping and piloting, utilities relocation and pipe jacking

There will be continuation of lane closure along Persiaran Industri (Kepong-bound) from **27 March 2017 to 16 May 2017, 10pm – 6am daily**.

The lane closure will be implemented by stages for a stretch of 100 metres. During the closure, motorists using Persiaran Industri will be diverted to the opposite lane by flagmen at both end using "STOP and GO" method of traffic flow (as indicated in **PURPLE** arrows in map).



For media enquiries, please contact:

Mohd Sofie Hassan
Leanne Ann Susau

Tel: +6019 228 3004
Tel: +603 7493 3832

sofie@sunway.com.my
leanne@mgjv-kvmrt.com.my

MMC GAMUDA KVMRT (PDP SSP) SDN BHD (1117100-V)
Block A, Level 17, Menara Mustapha Kamal, PJ Trade Centre
No 8, Jalan PJU 8/8A, Bandar Damansara Perdana, 47820 Petaling Jaya
Selangor Darul Ehsan, Malaysia
T: +603-7494 2222 F: +603-7727 0222 www.mymrt.com.my