

TRAFFIC ANNOUNCEMENT
UPDATES ON TRAFFIC MANAGEMENT PLAN FOR MRT SSP CONSTRUCTION
ALONG JALAN KUALA SELANGOR (SUNGAI BULOH-BOUND AND KEPONG-BOUND)
21 MARCH 2017

1. CONTINUATION OF LANE CLOSURES ALONG JALAN KUALA SELANGOR (SUNGAI BULOH-BOUND AND KEPONG-BOUND)

Date	23 March 2017 - 22 April 2017
Time	24 hours
Duration	1 month
Reason	To facilitate loading/unloading material and open guard rail, site clearing and tree cutting, mapping and piloting, utilities relocation, temporary works - sheet pile and earth work, soil investigation, road widening and diversion, piling and pile cap, 33kv TNB cable relocation for MRT Construction Works

To facilitate our construction works, there will be continuation of lane closures along Jalan Kuala Selangor (Sungai Buloh-bound and Kepong-bound) from **23 March 2017 to 22 April 2017, intermittently.**

The traffic management plan involves the following closures:

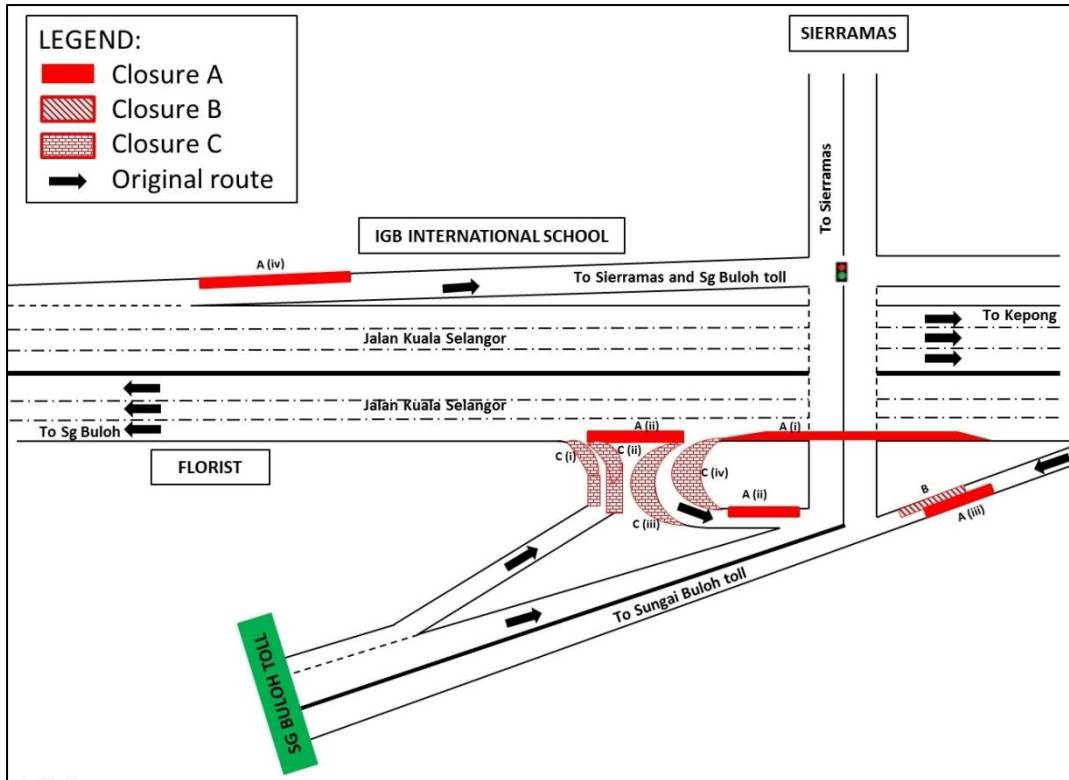
Closure A (24 hours):

- i. Left-most lane closure along Jalan Kuala Selangor (Sungai Buloh-bound) at KM47 before the ramp up to Sierramas.
- ii. Left-most lane closure along Jalan Kuala Selangor (Sungai Buloh-bound) after the ramp up to Sierramas for a stretch 100 metres; Left lane closure on the ramp up to Sierramas for a stretch 100 metres
- iii. Left lane closure towards Sungai Buloh toll for a stretch of 100 metres.
- iv. Left lane closure on the ramp up to Sierramas and IGB International School (Kepong-bound) for a stretch of 100 metres.

Closure B (24 hours): Right lane closure towards Sungai Buloh toll for a stretch of 100 metres. During this closure, Closure A (iii) will not take place.

Closure C (10pm – 6am):

- i. Partial left lane closure after Sungai Buloh toll before joining into Jalan Kuala Selangor (Sungai Buloh-bound) for a stretch of 80 metres.
- ii. Partial right lane closure after Sungai Buloh toll before joining into Jalan Kuala Selangor (Sungai Buloh-bound) for a stretch of 80 metres.
- iii. Partial right lane closure on the ramp up to Sierramas for a stretch 50 metres.
- iv. Partial left lane closure on the ramp up to Sierramas for a stretch of 50 metres.



MAP 1 : CONTINUATION OF LANE CLOSURES ALONG JALAN KUALA SELANGOR (SUNGAI BULOH-BOUND AND KEPONG-BOUND)

2. UPDATE : CONTINUATION OF LONG-TERM LANE CLOSURES FROM KM47 TO KM52 ALONG JALAN KUALA SELANGOR (SUNGAI BULOH-BOUND AND KEPONG-BOUND)

Date	23 March 2017 - 31 May 2017
Time	10pm – 6am; 10pm – 8am
Duration	2 months 9 days
Reason	To facilitate loading/unloading material and open guard rail, site clearing and tree cutting, piloting and mapping, utilities relocation, temporary works (sheet pile and earth work), bore piling work, pile cap, and survey works for MRT construction

There will be a continuation of long-term one lane closure by stages for a stretch of 500 metres along Jalan Kuala Selangor (Sungai Buloh-bound and Kepong-bound) from **23 March 2017 to 31 May 2017**, as per the following time, **intermittently**:

- **Monday to Saturday (10pm - 6am)**
- **Sundays and public holidays (10pm - 8am)**

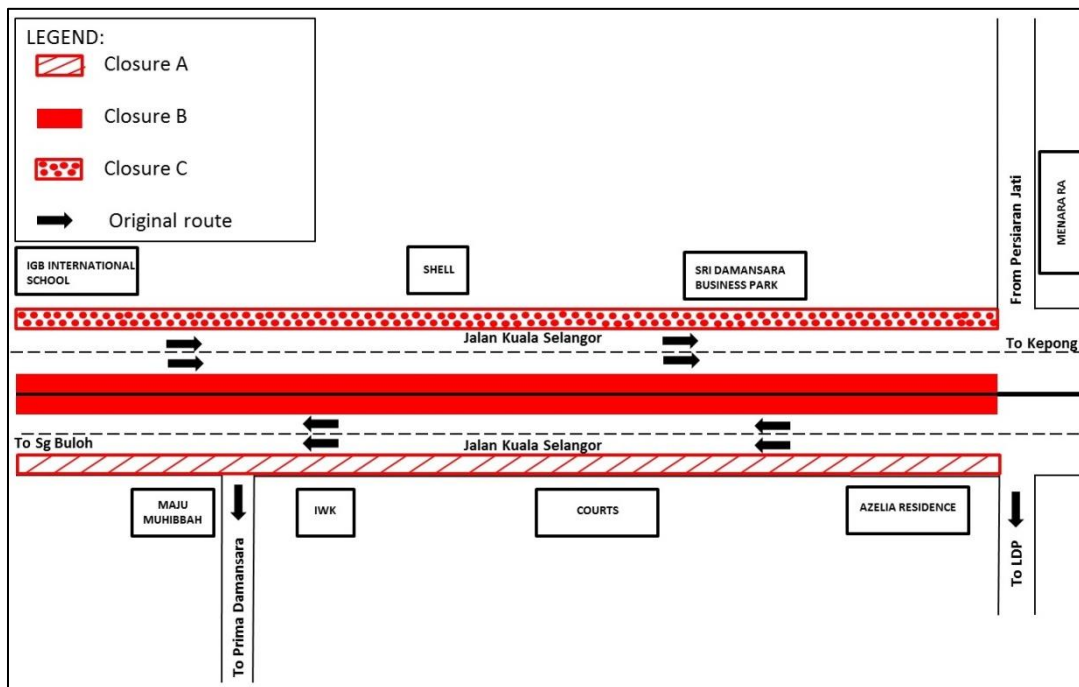
The traffic management plan involves the following closures:

Closure A: Left-most lane closure along Jalan Kuala Selangor (Sungai Buloh-bound).

Closure B: Right-most lane closure along Jalan Kuala Selangor (Sungai Buloh-bound and Kepong-bound).

Closure C: Left-most lane closure along Jalan Kuala Selangor (Kepong-bound).

The closures are in stages and at any one time there will be two (2) lanes available for motorists on both bounds.



MAP 2 : UPDATE : CONTINUATION OF LONG-TERM LANE CLOSURES FROM KM47 TO KM52 ALONG JALAN KUALA SELANGOR (SUNGAI BULOH-BOUND AND KEPONG-BOUND)

For media enquiries, please contact:

Mohd Sofie Hassan

Tel: +6019 228 3004

sofie@sunway.com.my

Leanne Ann Susau

Tel: +603 7493 3832

leanne@mgjv-kvmrt.com.my

MMC GAMUDA KVMRT (PDP SSP) SDN BHD (1117100-V)
Block A, Level 17, Menara Mustapha Kamal, PJ Trade Centre
No 8, Jalan PJU 8/8A, Bandar Damansara Perdana, 47820 Petaling Jaya
Selangor Darul Ehsan, Malaysia
T: +603-7494 2222 F: +603-7727 0222 www.mymrt.com.my