

**TRAFFIC ANNOUNCEMENT
CONTINUATION OF LANE CLOSURES ALONG JALAN KUALA SELANGOR
(SUNGAI BULOH-BOUND AND KEPONG-BOUND)
21 FEBRUARY 2017**

Date	23 February 2017 - 22 March 2017
Time	24 hours
Duration	1 month
Reason	To facilitate loading/unloading material and open guard rail, site clearing and tree cutting, mapping and piloting, utilities relocation, temporary works - sheet pile and earth work, soil investigation, road widening and diversion, piling and pile cap for MRT Construction Works

To facilitate our construction works, there will be continuation of lane closures along Jalan Kuala Selangor (Sungai Buloh-bound and Kepong-bound) from **23 February 2017 to 22 March 2017, 24 hours daily**.

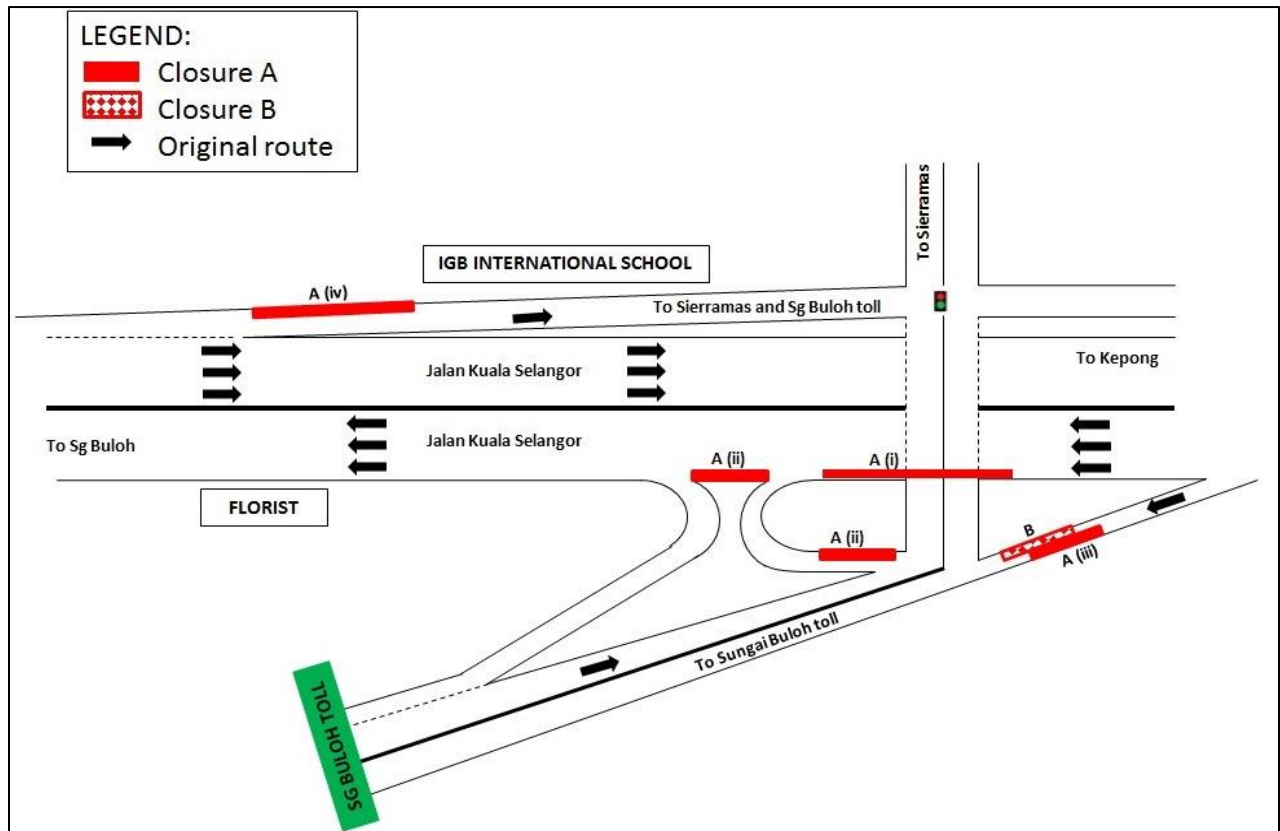
The traffic management plan involves the following closures:

Closure A (23 February 2017 - 22 March 2017):

- i. Left-most lane closure along Jalan Kuala Selangor (Sungai Buloh-bound) at KM47 before the ramp up to Sierramas.
- ii. Left-most lane closure along Jalan Kuala Selangor (Sungai Buloh-bound) after the ramp up to Sierramas for a stretch 100 metres; Left lane closure on the ramp up to Sierramas for a stretch 100 metres
- iii. Left lane closure towards Sungai Buloh toll for a stretch of 100 metres.
- iv. Left lane closure on the ramp up to Sierramas and IGB International School (Kepong-bound) for a stretch of 100 metres.

Closure B (1 March 2017 - 22 March 2017):

Right lane closure towards Sungai Buloh toll for a stretch of 100 metres. During this closure, Closure A(iii) will not take place.



For media enquiries, please contact:

Mohd Sofie Hassan
 Leanne Ann Susau

Tel: +6019 228 3004
 Tel: +603 7493 3832

sofie@sunway.com.my
 leanne@mgjv-kvmrt.com.my

MMC GAMUDA KVMRT (PDP SSP) SDN BHD (1117100-V)
 Block A, Level 17, Menara Mustapha Kamal, PJ Trade Centre
 No 8, Jalan PJU 8/8A, Bandar Damansara Perdana, 47820 Petaling Jaya
 Selangor Darul Ehsan, Malaysia
 T: +603-7494 2222 F: +603-7727 0222 www.kvmrt.com.my