

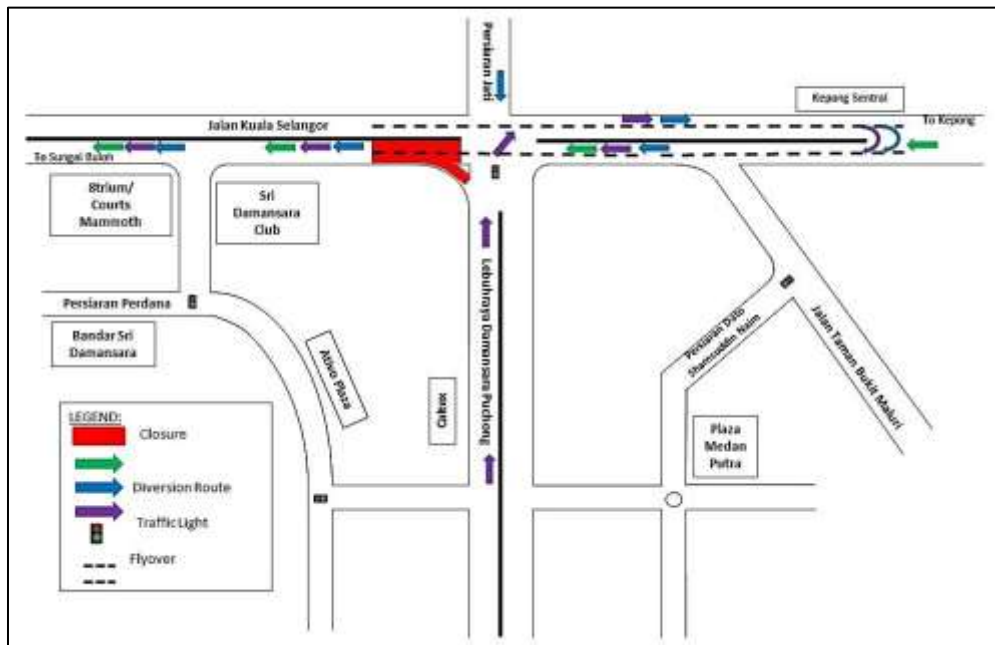
TRAFFIC ANNOUNCEMENT
UPDATES ON TRAFFIC MANAGEMENT PLAN FOR MRT SSP CONSTRUCTION ALONG LDP,
PERSIARAN DAGANG, DESA JAYA AND PUTRAJAYA
19 JANUARY 2017

1. CONTINUATION OF LONG-TERM NIGHT SLIP ROAD CLOSURE TO JALAN KUALA SELANGOR FROM LEBUHRAYA DAMANSARA PUCHONG (SUNGAI BULOH-BOUND)

Date	19 January 2017 - 28 February 2017
Time	10:00PM – 6:00AM
Duration	1 month 10 days
Reason	To facilitate survey works, mapping and piloting and utilities relocation for MRT construction works

There will be a continuation of long-term night slip road closure to Jalan Kuala Selangor from Lebuhraya Damansara Puchong (LDP) from **19 January 2017 – 28 February 2017, 10:00PM-6:00AM daily**. During the closure, the following diversions will take place:

- **Motorists from LDP heading to Sungai Buloh** can turn right at the LDP/DUKE 2 Interchange traffic light to connect to Jalan Kuala Selangor (Kepong-bound) and make a U-Turn after Kepong Sentral KTM Station underneath the MRR2 flyover before joining the ramp up to Jalan Kuala Selangor (Sungai Buloh-bound) (as indicated in **PURPLE** arrows in map).
- **Motorists from Persiaran Jati heading to Sungai Buloh** will be diverted to turn left to Jalan Kuala Selangor (Kepong-bound) and then make a U-Turn after Kepong Sentral KTM Station underneath the MRR2 flyover before joining the ramp up to Jalan Kuala Selangor (Sungai Buloh-bound) (as indicated in **BLUE** arrows in map).
- **Motorists from Kepong heading to Sungai Buloh** are advised to use the ramp up to Jalan Kuala Selangor (Sungai Buloh-bound) (as indicated in **GREEN** arrows in map).



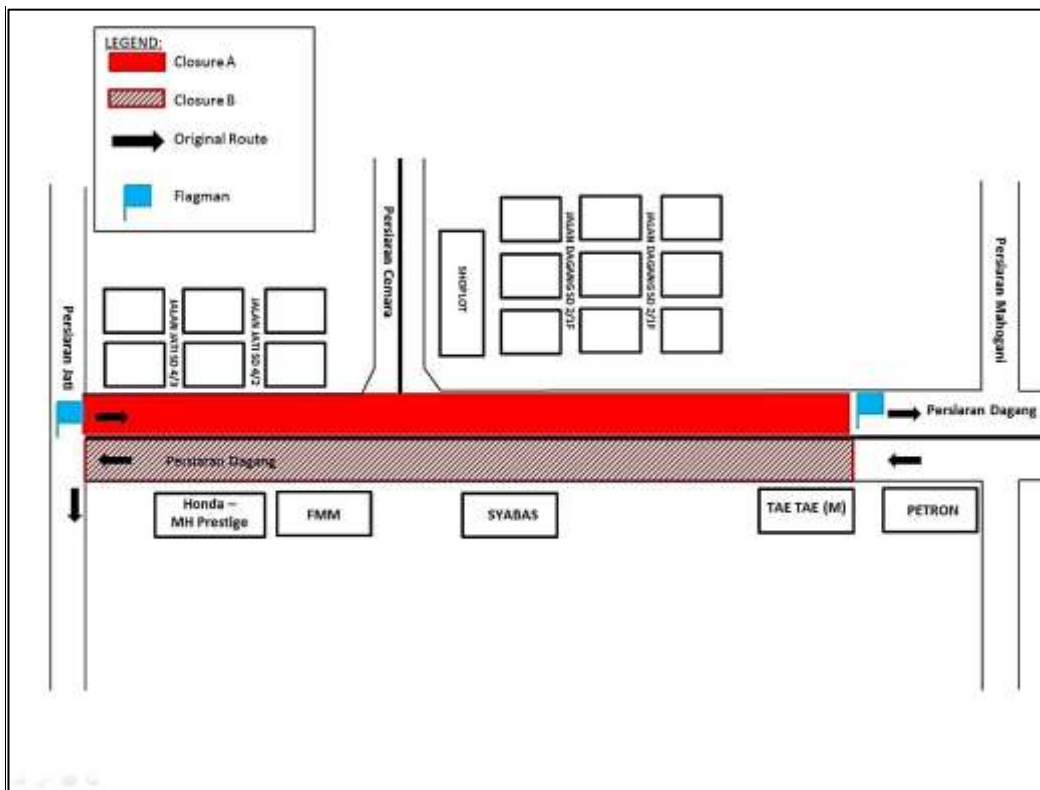
MAP 1 : CONTINUATION OF LONG-TERM NIGHT SLIP ROAD CLOSURE TO JALAN KUALA SELANGOR FROM LEBUHRAYA DAMANSARA PUCHONG (SUNGAI BULOH-BOUND)

2. CONTINUATION OF ONE LANE CLOSURE ALONG PERSIARAN DAGANG (INTERMITTENT CLOSURE)

Date	19 January 2017 - 7 February 2017
Time	8:00AM-6:00PM; 10:00PM-6:00AM
Duration	20 days
Reason	To facilitate site clearing and tree cutting, installation of noise barrier, mapping and piloting, road widening and utilities relocation

There will be a continuation of a one lane closure for a stretch of 200 metres along Persiaran Dagang from **19 January 2017- 7 February 2017, 8:00AM-6:00PM; 10:00PM-6:00AM**. This closure will be **conducted intermittently** and will be affecting motorists heading towards Persiaran Mahogany (Closure A) and Persiaran Jati/LDP (Closure B).

During the closure, motorists will be diverted to the opposite lane by flagmen on both directions using "STOP" and "GO" method of traffic flow. **The closures are in stages and at any one time there will be one (1) lane available for motorists.**



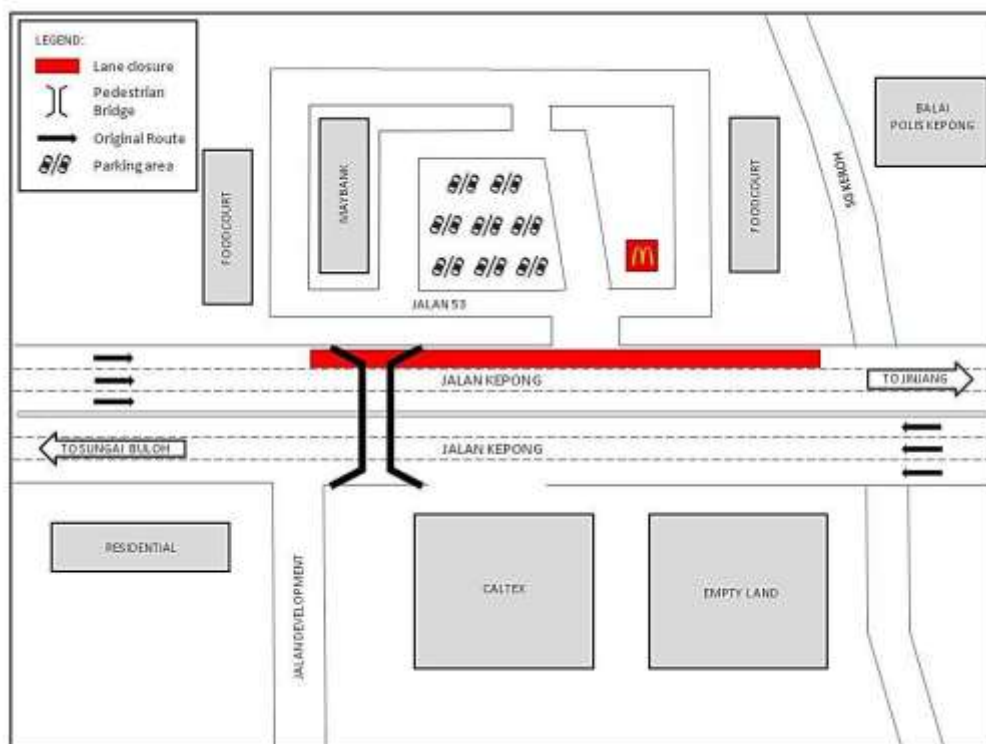
MAP 2 : CONTINUATION OF INTERMITTENT ONE LANE CLOSURE ALONG PERSIARAN DAGANG

3. SHORT-TERM LANE CLOSURE AT DESA JAYA (JINJANG-BOUND)

Date	19 January 2017 - 27 January 2017
Time	11:00PM - 6:00AM
Duration	9 days
Reason	To facilitate utility works for MRT construction works

There will be a short-term lane closure along Jalan Kepong (Jinjang-bound) nearby Desa Jaya Business Complex starting from **19 January 2017 – 27 January 2017, 11:00PM – 6:00AM daily**.

The left-most lane will be closed for a stretch of 600 metres from the pedestrian bridge at Desa Jaya Business Complex until Sg Keroh Bridge (Jinjang-bound). During this closure, two (2) lanes will be made available for motorists.

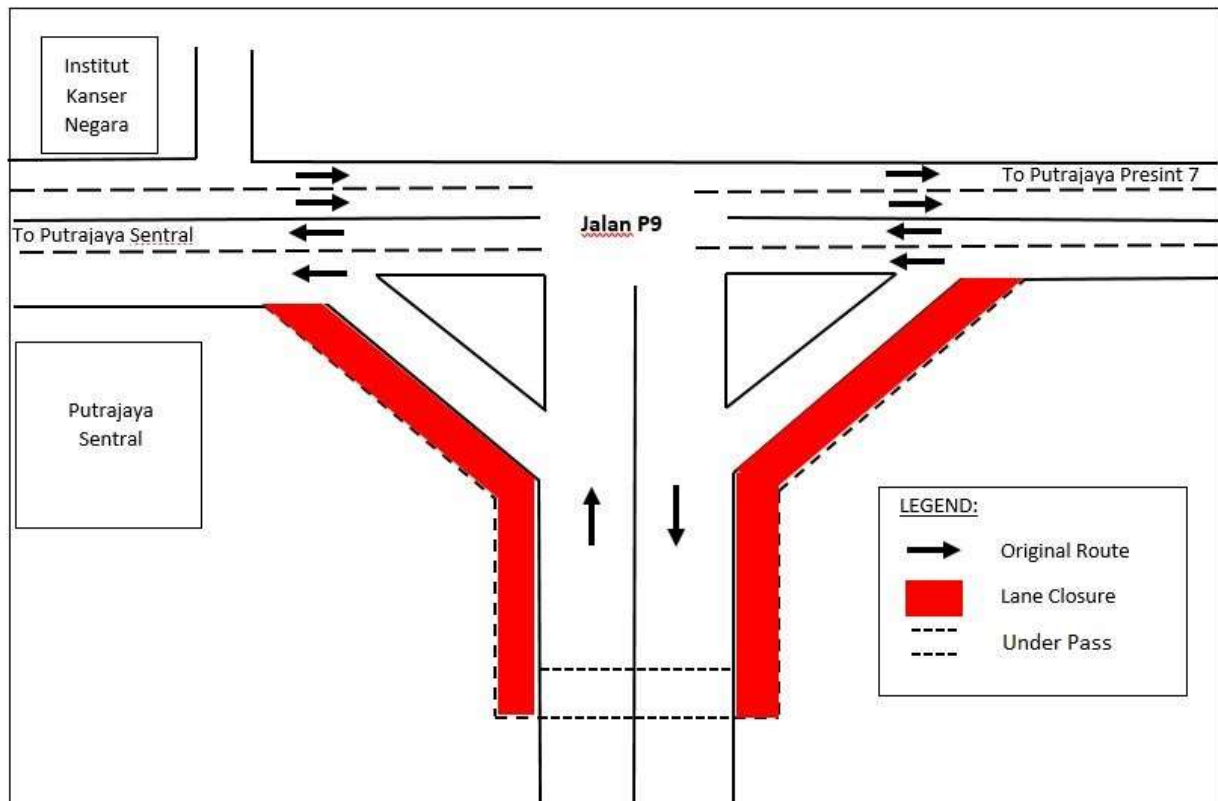


MAP 3 : SHORT-TERM LANE CLOSURE AT DESA JAYA (JINJANG-BOUND)

4. LONG TERM LANE CLOSURES AT JALAN P9 ACCESS ROAD OF PUTRAJAYA SENTRAL AND PUTRAJAYA PRESINT 7

Date	19 January 2017 - 30 April 2017
Time	9:00AM to 4:30PM; 6:00PM to 10:00PM
Duration	3 months 13 days
Reason	To facilitate soil investigation, piloting and bore pile and other work related to MRT SSP Line

There will be long-term lane closures at Jalan P9 access road towards Putrajaya Sentral from **19 January 2017 – 30 April 2017, 9:00AM to 4:30PM and 6:00PM to 10:00PM**. During this closure, the number of lanes shall remain unaffected.



MAP 4 : LONG TERM LANE CLOSURES JALAN P9 ACCESS ROAD OF PUTRAJAYA SENTRAL AND PUTRAJAYA PRESINT 7

For media enquiries, please contact:

Mohd Sofie Hassan **(Item 1 & 2)**

Tel: +6019 228 3004

sofie@sunway.com.my

Mohd Farid Sumali **(Item 3)**

Tel: +6017 227 7357

mohdfarid@azrb.com

Mohd Hisham Abu Bakar **(Item 4)**

Tel: +6017 447 2767

hisham.bakar@mrcb.com

Leanne Ann Susau **(Item 1-4)**

Tel: +603 7493 3832

leanne@mgjv-kvmrt.com.my

MMC GAMUDA KVMRT (PDP SSP) SDN BHD (1117100-V)

Block A, Level 17, Menara Mustapha Kamal, PJ Trade Centre

No 8, Jalan PJU 8/8A, Bandar Damansara Perdana, 47820 Petaling Jaya

Selangor Darul Ehsan, Malaysia

T: +603-7494 2222 F: +603-7727 0222 www.kvmrt.com.my